

BREAST TEST WALES

PROGRAMME PERFORMANCE REPORT

2011-12

(for the period 01/04/11 – 31/03/12)

Produced by Screening Informatics, Screening Division, Public Health Wales

Contact: Guy Stevens, Information Supervisor, guy.stevens@wales.nhs.uk, 029-2078-7816

Contents

Summary	page 3
Coverage	page 4
Screening Activity	page 5
Invitation and Uptake	page 6
Assessment	page 8
Cancer Detection	page 11
Appendix A (2011-12 NHSBSP QA Performance Standards)	page 16
Appendix B (2011-12 KC62 – Wales)	page 20
Appendix C (2011-12 KC62 – North Wales)	page 38
Appendix D (2011-12 KC62 – South East Wales)	page 56
Appendix E (2011-12 KC62 – South West Wales)	page 74

Summary

Programme background 2011-12

This year has been a period of considerable disruption and change for breast screening services in Wales. The suspension of screening and new ways of working following the introduction of digital mammography in 2 of the 3 screening units has negatively impacted upon waiting times for results and assessments and resulted in an increasing round length. However, overall programme performance against the core NHSBSP standards remains excellent (see Appendix A).

Coverage

Coverage is defined as the percentage of women resident and eligible for breast screening at a particular point in time who have been screened within the previous 3 years. As at 31st March 2012 coverage of women aged 53-70 was 70.5%, compared with 74.6% at the same point in 2011 and 73.8% in 2010.

Screening activity

Nearly 83,000 women aged 49 and over were screened in 2011-12. Due to the disruption to screening associated with digital implementation this represents a sizeable drop compared to the 109,000 screened last year and in 2009.

Invitation and uptake

In 2011-12 just over 102,000 women aged 50-70 were invited for screening, compared to 134,000 last year. Uptake of those routinely invited and aged 50-70 was 73.2%, compared to 74.3% in 2010-11 and 75.6% in 2009. Uptake is one of several indicators of programme performance monitored on a monthly basis at unit level.

Assessment

Referrals for assessment stood at 5.3% of those screened in 2011-12. This compares to 5.1% last year and 4.9% in 2009.

Cancer detection

A total of 816 cancers were detected in women screened aged 49 and over. This represents 9.8 cases per 1000 women screened. In comparison, there were 1050 cancers detected in 2010 (9.6 per 1000 screened) and 989 detected in 2009 (9.1 per 1000 screened). Of the 816 cancers detected this year, 78.1% (637) were invasive lesions. In 2010 80% (839) were invasive and in 2009 79% (781). In 2011-12 54.2% (345) of the invasive cancers detected were classified as small (less than 15mm in size). This compares to 51.6% (433) in 2010 and 53.9% (421) in 2009.

Coverage

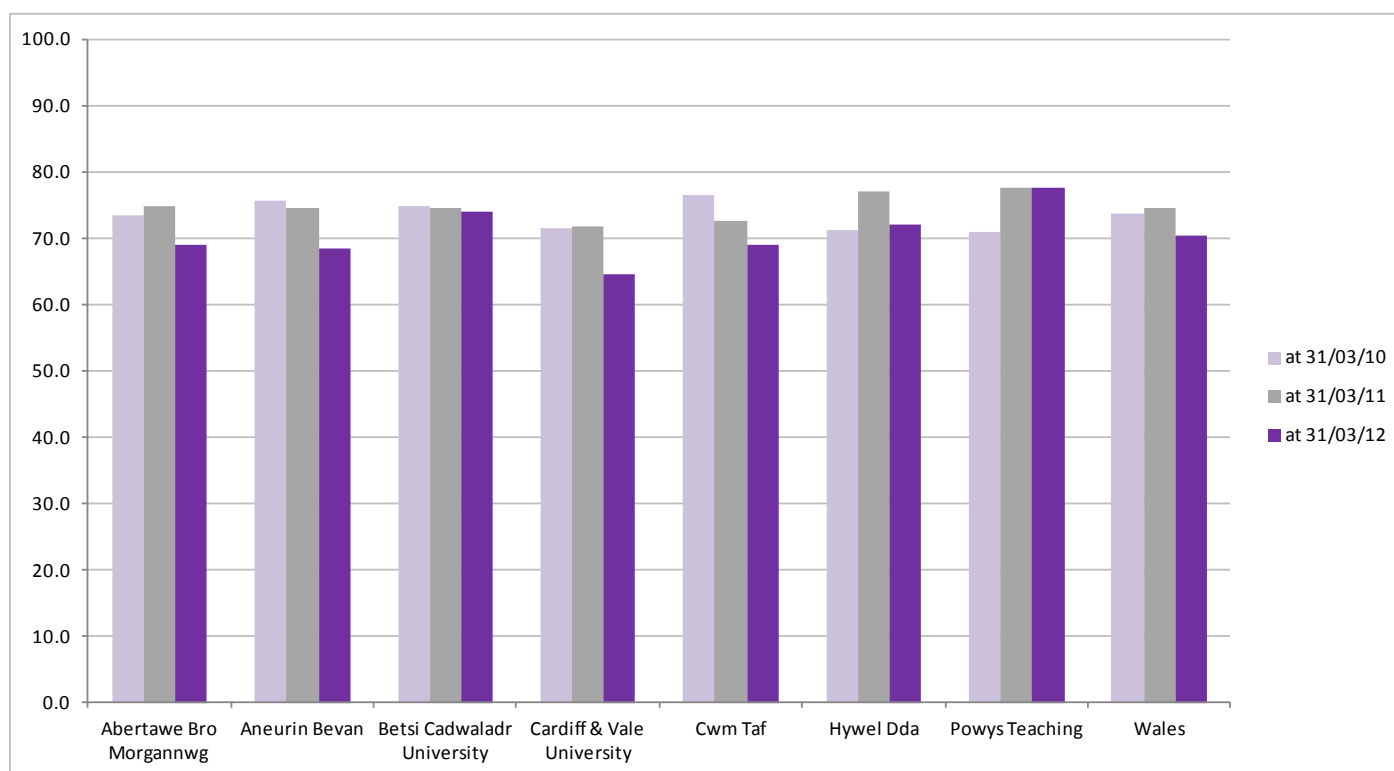
Coverage is defined as the percentage of women resident and eligible for breast screening at a particular point in time who have been screened within the previous 3 years. Ineligible women includes those who have undergone bilateral mastectomy.

Both uptake and round length can affect coverage. Because women are not necessarily screened when they turn 50 coverage is presented for the 53-70 age range.

As at 31st March 2012 coverage of women aged 53-70 was 70.5%, compared with 74.6% at the same point in 2011 and 73.8% in 2010.

The effect of the increasing round length resulting from digital implementation in the South and West Wales screening units is illustrated in Figure 1. The only Health Boards not to experience a sizeable drop in coverage compared to the previous year are those in North and mid-Wales (Betsi Cadwaladr University and Powys Teaching respectively).

Figure 1: Breast screening coverage among women aged 53-70, by Health Board, 2010-2012

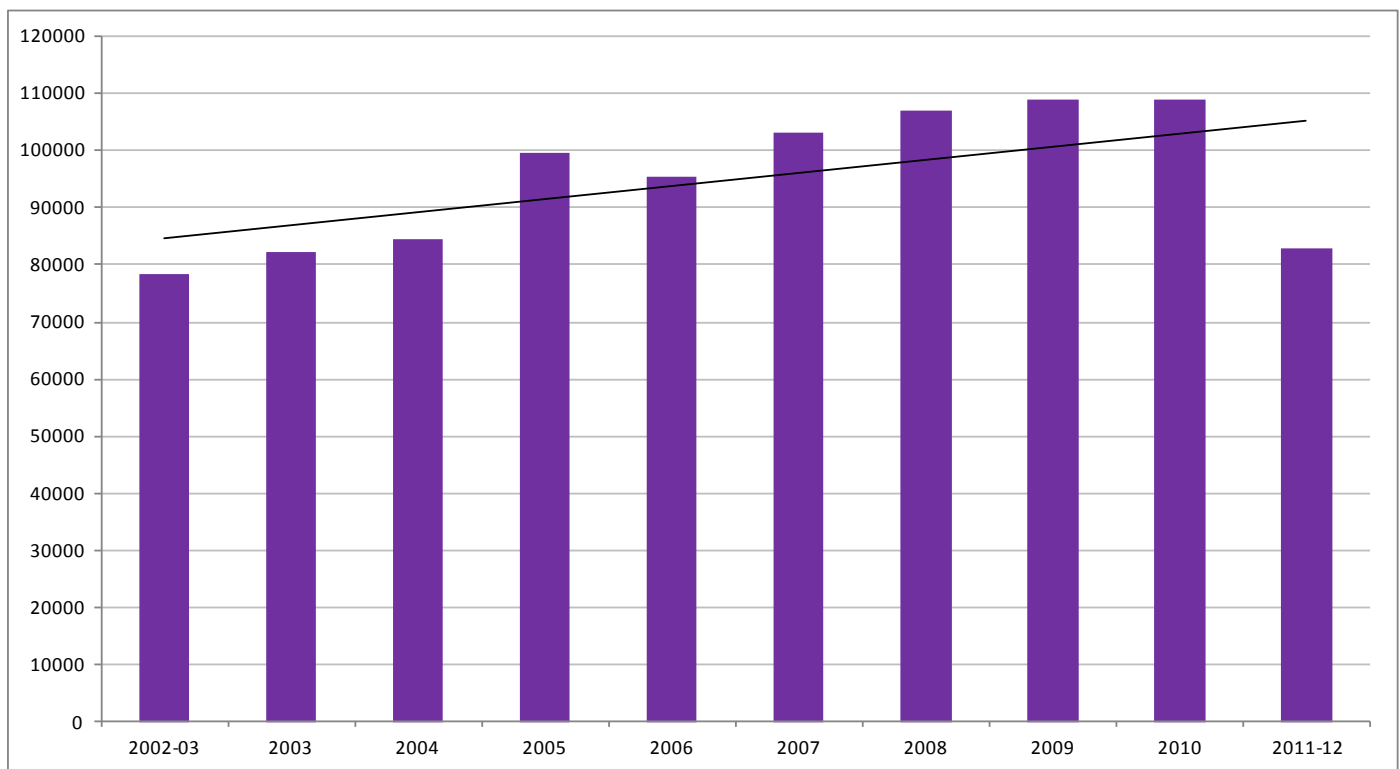


Screening Activity

Women may be routinely invited to attend breast screening if they are aged between 50 and 70 (or aged 49 if they are 50 in the year their practice is screened) or may self refer once older than 70. England has taken the decision to extend the invited age range to 47-73 but there are no current plans to replicate this elsewhere in the UK.

In total, nearly 83,000 women aged 49 and over were screened in 2011-12. Due to the disruption to screening associated with digital implementation this represents a sizeable drop compared to the 109,000 screened last year and in 2009. Figure 2 illustrates the general trend of increasing screening numbers over the years.

Figure 2: 10-year total screening activity, 2002-03 to 2011-12

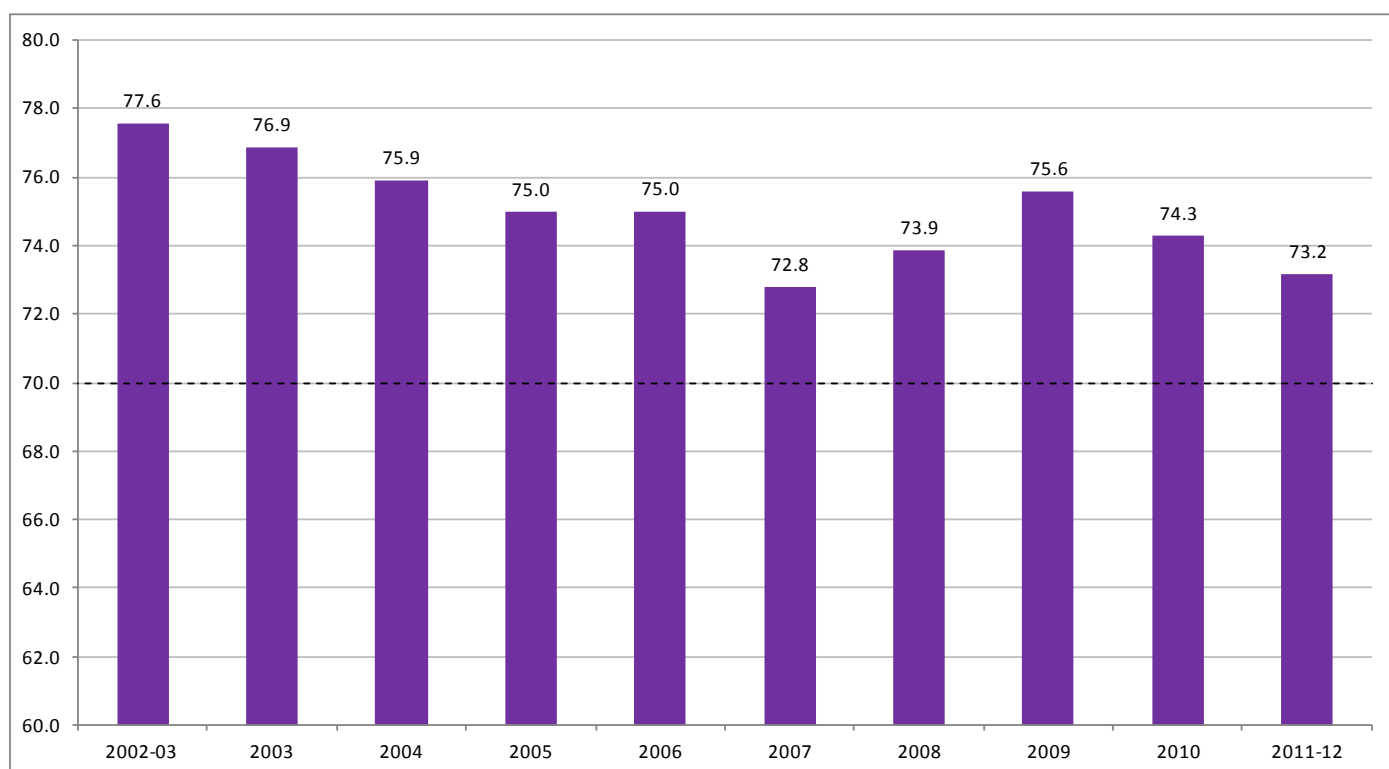


Invitation and Uptake

A stated aim of the NHS breast screening programme is to maximise the number of eligible women who attend for screening. To facilitate this, a national minimum standard for uptake of a routine invitation in those aged 50-70 has been set at 70%.

In 2011-12 uptake stood at 73.2%, compared to 74.3% in 2010 and 75.6% in 2009. Figure 3 shows uptake of screening amongst the routinely invited population (aged 50-70 from 2007, aged 50-64 prior to this).

Figure 3: 10-year uptake of routine breast screening invitations, 2002-03 to 2011-12

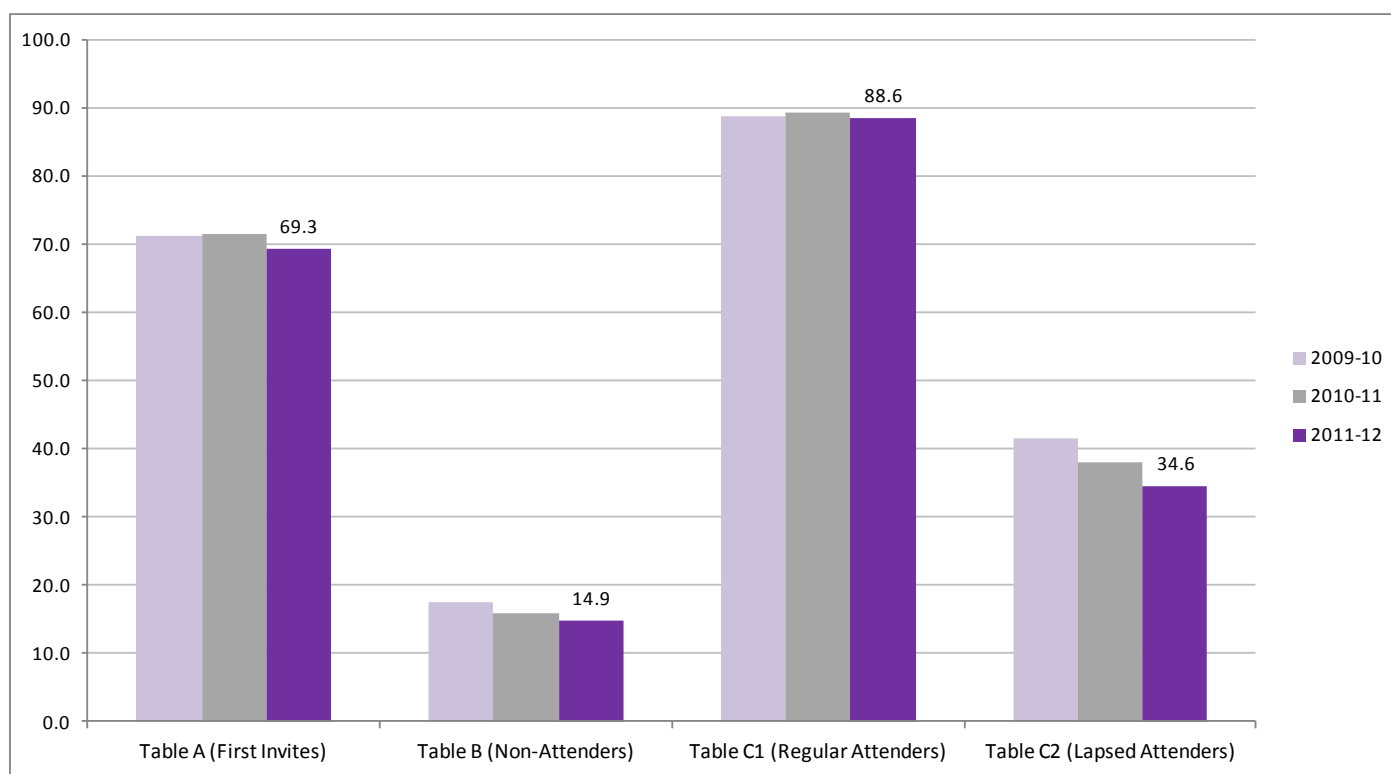


Uptake can vary according to the type of invitation. Routine invitations can be sub-divided into the following groups:

- First invitation (KC table A)
- Invitation to a previous non-attender (KC table B)
- Invitation to a previous attender who has been screened within the last 5 years (KC table C1)
- Invitation to a previous attender but screened more than 5 years ago (KC table C2)

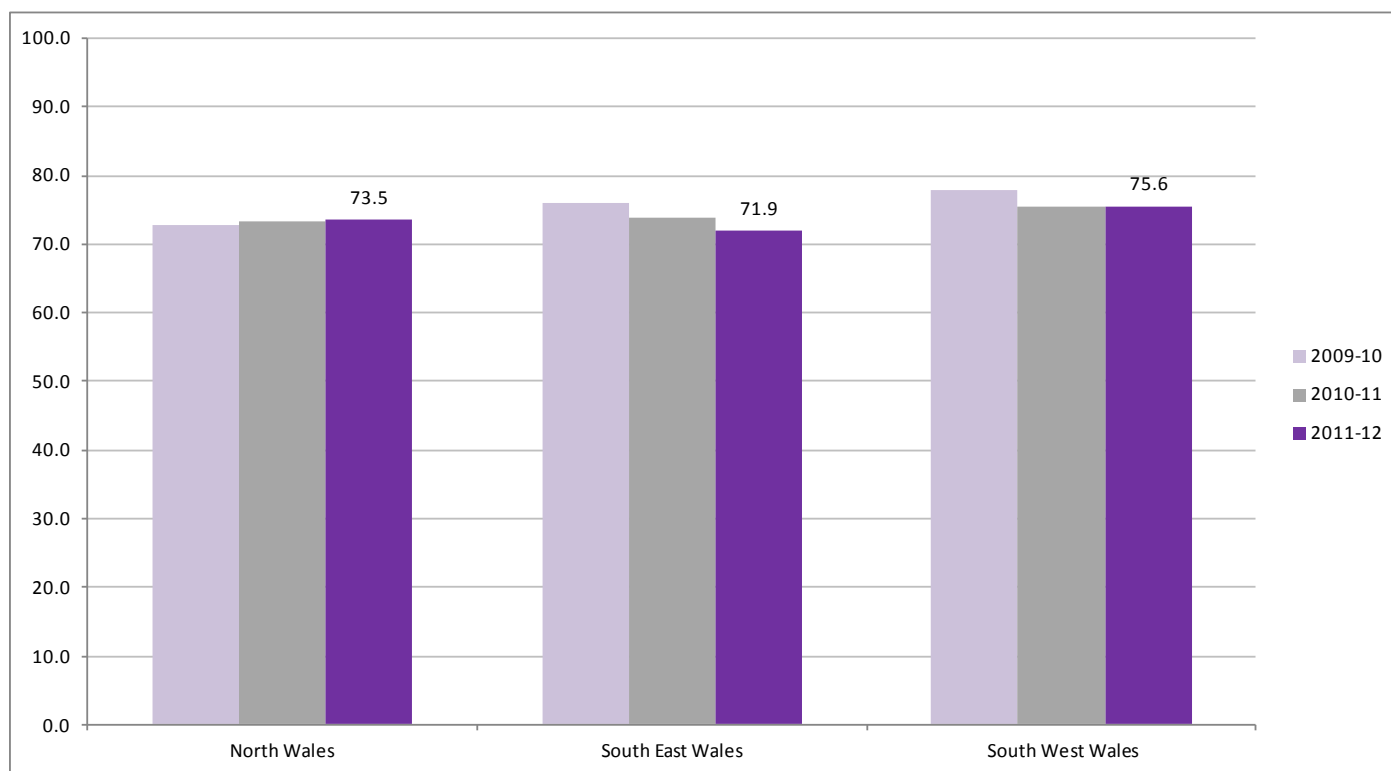
As Figure 4 demonstrates, uptake is highest among the regular attendees (Table C1 – 88.6%) and lowest among persistent non-attenders (Table B – 14.9%).

Figure 4: Uptake by invite type, 2009-10 to 2011-12



In terms of regional breakdown uptake is slightly higher in the South West, compared to the other 2 screening units (Figure 5). The gradual decline in uptake in the South East is noted but remains above the minimum standard. Nevertheless, uptake for all screening units is continually monitored on a monthly basis.

Figure 5: Uptake by screening unit, 2009-10 to 2011-12



Assessment

Referral for assessment

Should abnormalities be detected following screening, a woman will be recalled to undergo further assessment tests. An important aim of the programme is to minimise subjecting women to unnecessary anxiety and investigative procedures.

More women are expected to be recalled following the first screen (the prevalent screen) because any disease has had a longer time to develop and there are no prior images to inform the recall decision. Referral rates for women who have been screened previously (the incident screen) are likely to be lower because they will present with more recent disease and the screening history can assist the image reader.

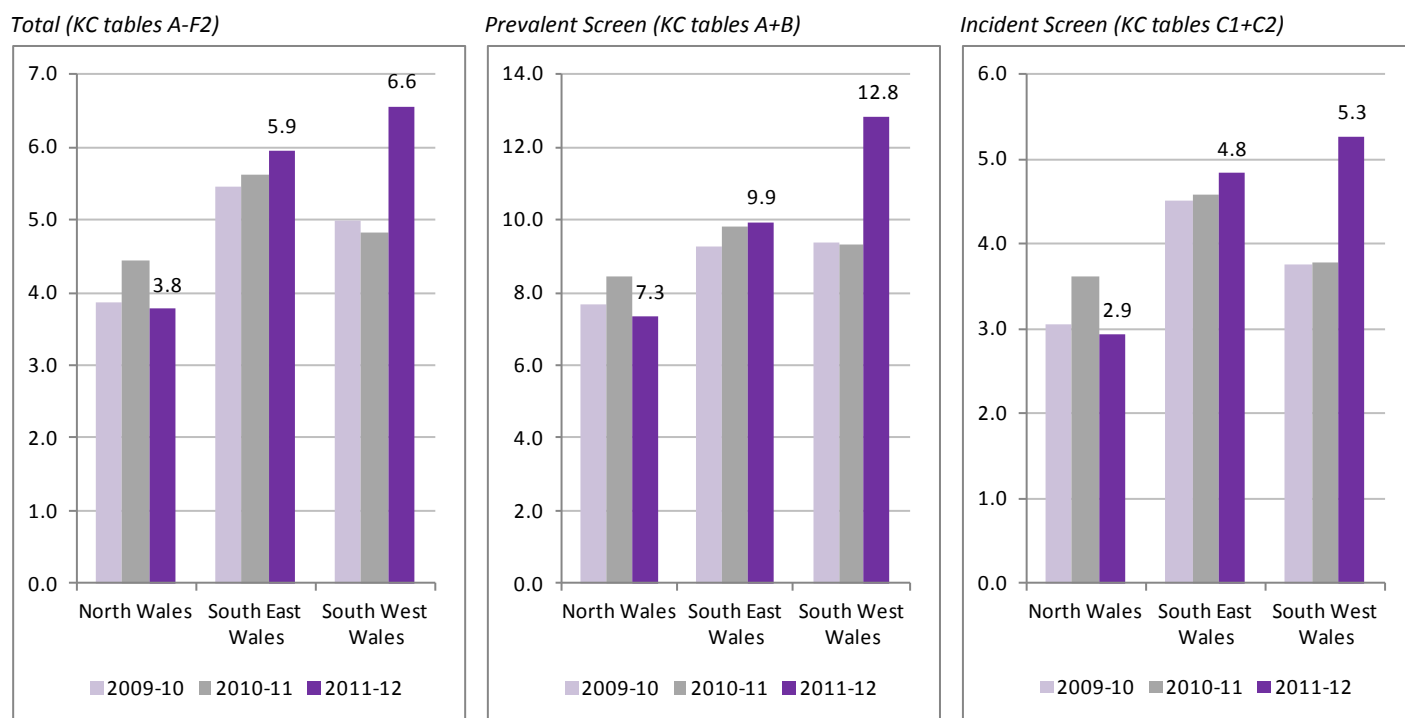
Table 1 shows the gradual rise in referral rates for most invitation/referral types but there is local variation. Both South East and South West Wales units underwent conversion to digital mammography equipment during the 2011-12 period and it is interesting to note the increase in their referrals, particularly the West, compared to a drop in North Wales (Figure 6). Referral rate is another measure that is closely monitored on a monthly basis.

Table 1: Referral for assessment, all ages, by invite/referral type, 2009-10 to 2011-12

	2009-10			2010-11			2011-12		
	Screened	Referred	%	Screened	Referred	%	Screened	Referred	%
Total	108,988	5384	4.9	108,858	5523	5.1	82,855	4379	5.3
Prevalent Screen (KC tables A+B)	17,442	1553	8.9	17,883	1666	9.3	13,465	1295	9.6
Incident Screen (KC tables C1+C2)	84,249	3336	4.0	84,043	3431	4.1	63,285	2671	4.2
First invite for routine screening (KC table A)	15,319	1338	8.7	15,564	1415	9.1	11,831	1138	9.6
Routine invite to previous non-attenders (KC table B)	2123	215	10.1	2319	251	10.8	1634	157	9.6
Routine invite to previous attenders, last screen within 5 years (KC table C1)	79,226	3054	3.9	79,361	3144	4.0	60,097	2478	4.1
Routine invite to previous attenders, last screen more than 5 years previously (KC table C2)	5023	282	5.6	4682	287	6.1	3188	193	6.1
Early recalls (KC table D)	91	91	100	46	46	100	66	66	100
Self/GP referrals (KC tables E+F1+F2)	7206	404	5.6	6886	380	5.5	6039	347	5.7

[See Appendix B, column 7 for further breakdown]

Figure 6: Referral for assessment, by screening unit, 2009-10 to 2011-12



Assessment procedures

The assessment procedures that assist diagnosis are fine needle aspiration, wide bore needle and diagnostic open biopsy. The needle procedures are (generally) conducted at a Breast Test Wales unit while an open biopsy is a surgical operation requiring a hospital visit. To minimise anxiety it is desirable to obtain a definitive diagnosis (whether cancer or not) without the need for a hospital admission.

Of the 4379 women referred for assessment in 2011-12, 38% underwent fine needle aspiration and/or wide bore needle, while 2.8% required an open biopsy (Table 2).

Table 2: Referral for assessment procedures, all ages, by invite/referral type, 2009-10 to 2011-12

	2009-10					2010-11					2011-12				
	Refer	Needle Bx	%	Open Bx	%	Refer	Needle Bx	%	Open Bx	%	Refer	Needle Bx	%	Open Bx	%
Total	5384	2034	37.8	153	2.8	5523	2046	37.0	158	2.9	4379	1663	38.0	122	2.8
Prevalent Screen (KC tables A+B)	1553	546	35.2	53	3.4	1666	571	34.3	63	3.8	1295	502	38.8	49	3.8
Incident Screen (KC tables C1+C2)	3336	1291	38.7	86	2.6	3431	1323	38.6	84	2.4	2671	990	37.1	63	2.4
First invite for routine screening (KC table A)	1338	458	34.2	46	3.4	1415	481	34.0	56	4.0	1138	431	37.9	41	3.6
Routine invite to previous non-attenders (KC table B)	215	88	40.9	7	3.3	251	90	35.9	7	2.8	157	71	45.2	8	5.1
Routine invite to previous attenders, last screen within 5 years (KC table C1)	3054	1174	38.4	81	2.7	3144	1188	37.8	81	2.6	2478	905	36.5	61	2.5
Routine invite to previous attenders, last screen more than 5 years previously (KC table C2)	282	117	41.5	5	1.8	287	135	47.0	3	1.0	193	85	44.0	2	1.0
Early recalls (KC table D)	91	8	8.8	5	5.5	46	2	4.3	1	2.2	66	8	12.1	0	0
Self/GP referrals (KC tables E+F1+F2)	404	189	46.8	9	2.2	380	150	39.5	10	2.6	347	163	47.0	10	2.9

[See Appendix B, columns 14 & 20 for further breakdown]

Cancer Detection

Cancer detection rate

A total of 816 cancers were detected in women screened aged 49 and over. This represents 9.8 cases per 1000 women screened. In comparison, there were 1050 cancers detected in 2010 (9.6 per 1000 screened) and 989 detected in 2009 (9.1 per 1000 screened). As mentioned, the disruption to screening due to digital equipment implementation explains the drop in actual number of women with cancer detected.

Cancer detection amongst prevalent screen women was 10 per 1000 screened, compared to 8.9 per 1000 in 2010 and 7.8 per 1000 in 2009. For incident screen women the rate was 9.1 per 1000 screened in 2011-12, 9.5 in 2010 and 8.8 in 2009 (Table 3).

Table 3: Cancer detection rate (per 1000 women screened), all ages, by invite/referral type, 2009-10 to 2011-12

	2009-10			2010-11			2011-12		
	Screened	Cancers	Rate	Screened	Cancers	Rate	Screened	Cancers	Rate
Total	108,988	989	9.1	108,858	1050	9.6	82,855	816	9.8
Prevalent Screen (KC tables A+B)	17,442	136	7.8	17,883	160	8.9	13,465	134	10.0
Incident Screen (KC tables C1+C2)	84,249	744	8.8	84,043	801	9.5	63,285	577	9.1
First invite for routine screening (KC table A)	15,319	113	7.4	15,564	134	8.6	11,831	113	9.6
Routine invite to previous non-attenders (KC table B)	2123	23	10.8	2319	26	11.2	1634	21	12.9
Routine invite to previous attenders, last screen within 5 years (KC table C1)	79,226	687	8.7	79,361	718	9.0	60,097	533	8.9
Routine invite to previous attenders, last screen more than 5 years previously (KC table C2)	5023	57	11.3	4682	83	17.7	3188	44	13.8
Early recalls (KC table D)	91	2	22.0	46	0	0	66	2	30.3
Self/GP referrals (KC tables E+F1+F2)	7206	107	14.8	6886	89	12.9	6039	103	17.1

[See Appendix B, column 12 for further breakdown]

Examination of cancer detection rates at screening unit level (Figure 7) shows a significant increase in South West Wales, an increase replicated across ages and invitation/referral types. As mentioned, this unit underwent the conversion to digital mammography equipment during the 2011-12 period but further analysis is required to determine whether such an increase can be attributed to a technology change alone.

Figure 7: Cancer detection rate per 1000 women screened, by screening unit, 2009-10 to 2011-12

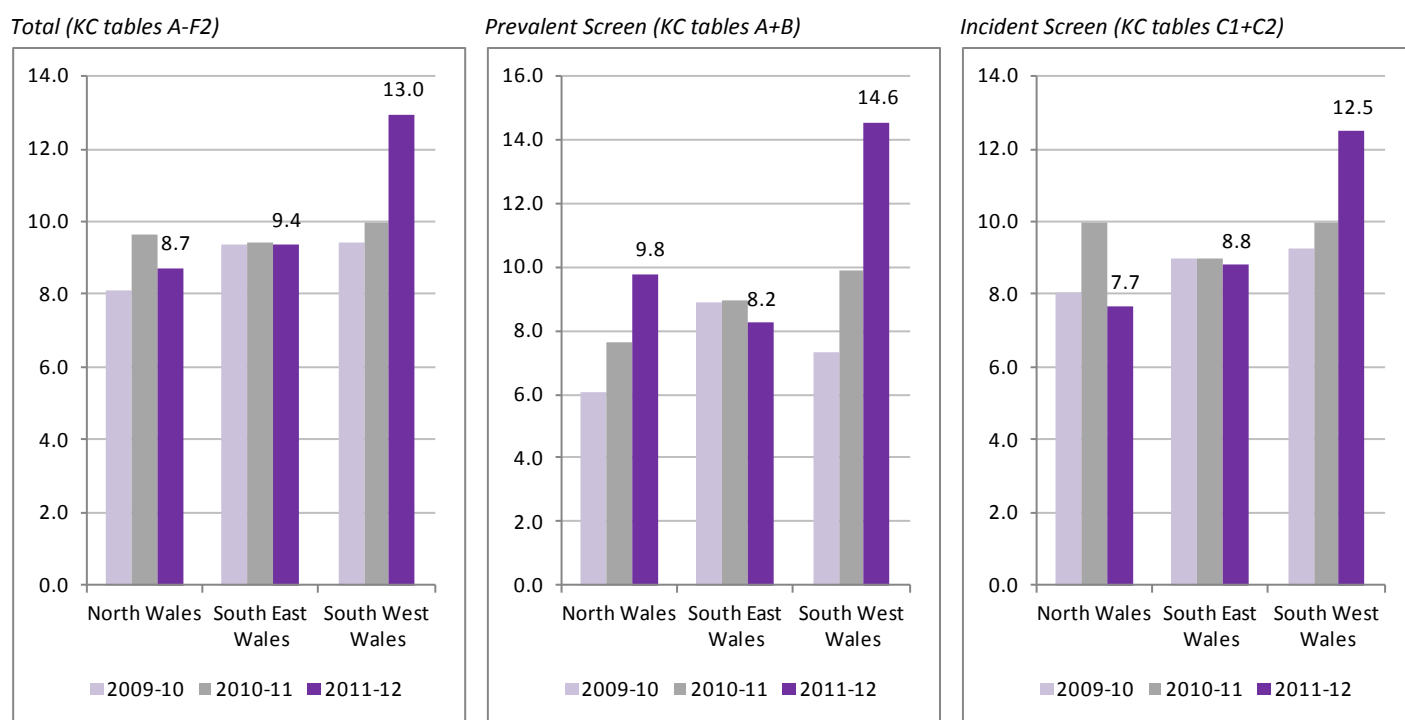
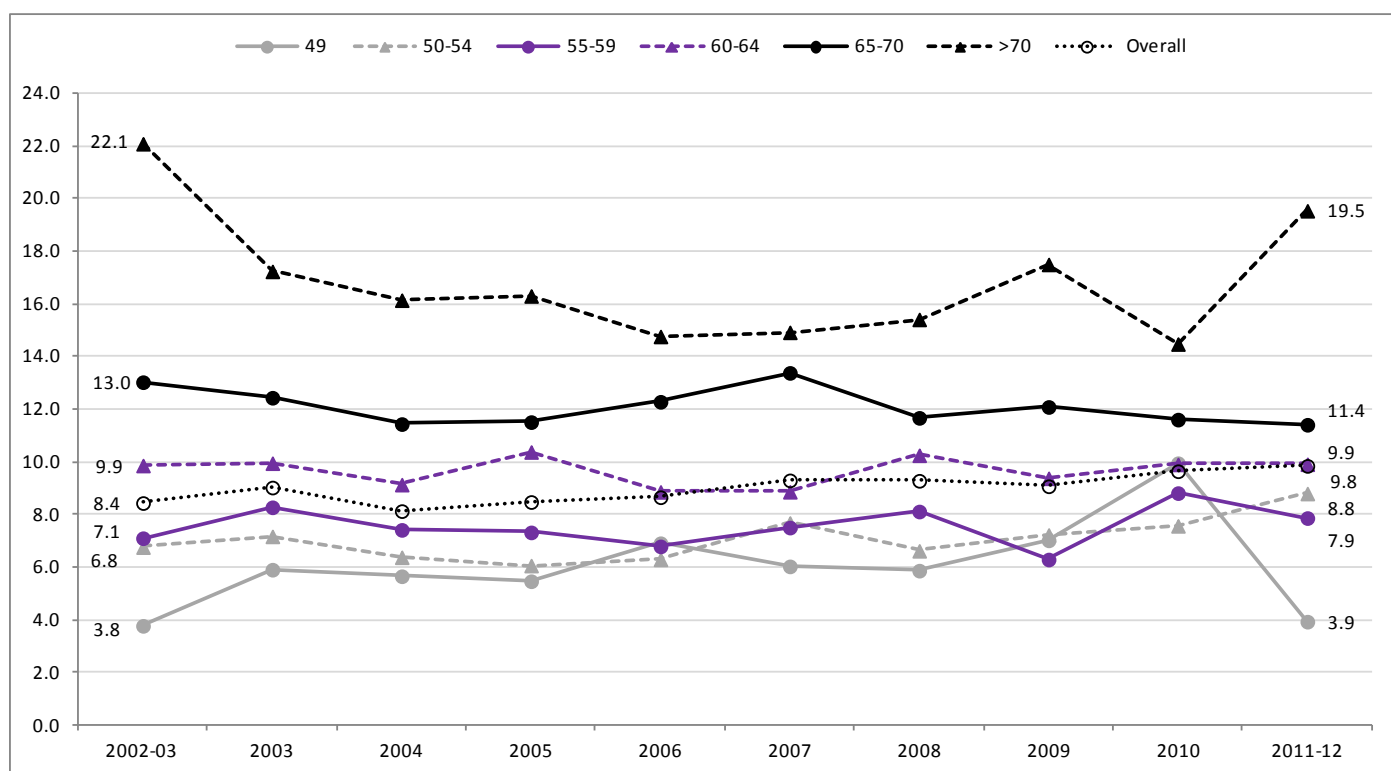


Figure 8 plots cancer detection rates over a 10 year period and shows how breast cancer incidence increases with age. In 2011-12 the cancer detection rate for women aged 50-54 was 8.8 per 1000 screened, rising to 9.9 per 1000 for those aged 60-64 and 11.4 per 1000 in the 65-70 age group.

Figure 8: Cancer detection rate (per 1000 women screened), 2002-03 to 2011-12, by age group



Cancer type and size

In terms of programme performance and analysis breast cancers are normally split into two groups. An invasive cancer is one which has spread into surrounding, healthy breast tissue. A non-invasive or micro-invasive cancer is contained within the ducts and lobules of the breast or has started to spread but only by a very small amount (less than 1mm).

In 2011-12 78.1% of the cancers detected in women screened were invasive, compared to 79.9% in 2010 and 79% in 2009 (Table 4). The invasive cancers that are generally too small to feel (less than 15mm) accounted for 54.2% of all the invasives detected in 2011-12 (Table 5). This compares to 51.6% last year and 53.9% in 2009.

Non-invasive or micro-invasive disease made up 21.9% of all cancers detected in 2011-12, while in 2010 they accounted for 20.1% and in 2009 21% (Table 6).

Table 4: Invasive cancers detected, all ages, by invite/referral type, 2009-10 to 2011-12

	2009-10			2010-11			2011-12		
	Cancers	Invasive	%	Cancers	Invasive	%	Cancers	Invasive	%
Total	989	781	79.0	1050	839	79.9	816	637	78.1
Prevalent Screen (KC tables A+B)	136	98	72.1	160	116	72.5	134	97	72.4
Incident Screen (KC tables C1+C2)	744	593	79.7	801	646	80.6	577	454	78.7
First invite for routine screening (KC table A)	113	82	72.6	134	97	72.4	113	82	72.6
Routine invite to previous non-attenders (KC table B)	23	16	69.6	26	19	73.1	21	15	71.4
Routine invite to previous attenders, last screen within 5 years (KC table C1)	687	547	79.6	718	582	81.1	533	414	77.7
Routine invite to previous attenders, last screen more than 5 years previously (KC table C2)	57	46	80.7	83	64	77.1	44	40	90.9
Early recalls (KC table D)	2	1	50.0	0	0	0	2	1	50.0
Self/GP referrals (KC tables E+F1+F2)	107	89	83.2	89	77	86.5	103	85	82.5

[See Appendix B, column 35 for further breakdown]

Table 5: Size of invasive cancers detected, all ages, by invite/referral type, 2009-10 to 2011-12

	2009-10						2010-11						2011-12					
	Total inv	<15 mm	%	15+ mm	%	Size unk	Total inv	<15 mm	%	15+ mm	%	Size unk	Total inv	<15 mm	%	15+ mm	%	Size unk
Total	781	421	53.9	332	42.5	28	839	433	51.6	361	43.0	45	637	345	54.2	266	41.8	26
Prevalent Screen (KC tables A+B)	98	47	48.0	46	46.9	5	116	49	42.2	59	50.9	8	97	44	45.4	49	50.5	4
Incident Screen (KC tables C1+C2)	593	323	54.5	249	42.0	21	646	344	53.3	270	41.8	32	454	257	56.6	182	40.1	15
First invite for routine screening (KC table A)	82	42	51.2	37	45.1	3	97	43	44.3	48	49.5	6	82	38	46.3	42	51.2	2
Routine invite to previous non-attenders (KC table B)	16	5	31.3	9	56.3	2	19	6	31.6	11	57.9	2	15	6	40.0	7	46.7	2
Routine invite to previous attenders, last screen within 5 years (KC table C1)	547	300	54.8	228	41.7	19	582	318	54.6	235	40.4	29	414	240	58.0	161	38.9	13
Routine invite to previous attenders, last screen more than 5 years previously (KC table C2)	46	23	50.0	21	45.7	2	64	26	40.6	35	54.7	3	40	17	42.5	21	52.5	2
Early recalls (KC table D)	1	1	100	0	0	0	0	0	0	0	0	0	1	0	0	1	100	0
Self/GP referrals (KC tables E+F1+F2)	89	50	56.2	37	41.6	2	77	40	51.9	32	41.6	5	85	44	51.8	34	40	7

[See Appendix B, columns 29-34 for further breakdown]

Table 6: Non-invasive/microinvasive cancers detected, all ages, by invite/referral type, 2009-10 to 2011-12

	2009-10			2010-11			2011-12		
	Cancers	Non-invasive or microinv	%	Cancers	Non-invasive or microinv	%	Cancers	Non-invasive or microinv	%
Total	989	208	21.0	1050	211	20.1	816	179	21.9
Prevalent Screen (KC tables A+B)	136	38	27.9	160	44	27.5	134	37	27.6
Incident Screen (KC tables C1+C2)	744	151	20.3	801	155	19.4	577	123	21.4
First invite for routine screening (KC table A)	113	31	27.4	134	37	27.6	113	31	27.4
Routine invite to previous non-attenders (KC table B)	23	7	30.4	26	7	26.9	21	6	28.6
Routine invite to previous attenders, last screen within 5 years (KC table C1)	687	140	20.4	718	136	18.9	533	119	22.3
Routine invite to previous attenders, last screen more than 5 years previously (KC table C2)	57	11	19.3	83	19	22.9	44	4	9.1
Early recalls (KC table D)	2	1	50.0	0	0	0	2	1	50.0
Self/GP referrals (KC tables E+F1+F2)	107	18	16.8	89	12	13.5	103	18	17.5

[See Appendix B, column 27 & 28 for further breakdown]

Appendix A - 2011-12 NHSBSP QA Performance Standards (v3 Dec 2005)

Wales

Objective	Criteria	Calculation	Minimum Standard	Target	Actual
To maximise the number of eligible women who attend for screening	The % of eligible women who attend for screening	Tables: A, B, C1, C2 Age: 50-70	$\geq 70\%$ of invited women to attend for screening	80%	73.2
To maximise the number of cancers detected	a. The rate of invasive cancers detected	Table A Age: 50-52	Prevalent screen ≥ 2.7 per 1000	Prevalent screen ≥ 3.6 per 1000	7.8
		Table C1 Age: 53-70	Incident screen ≥ 3.1 per 1000	Incident screen ≥ 4.2 per 1000	6.9
	b. The rate of non-invasive cancers detected	Table A Age: 50-52	Prevalent screen ≥ 0.4 per 1000		2.7
		Table C1 Age: 53-70	Incident screen ≥ 0.5 per 1000		2.0
	c. Standardised detection ratio (SDR)	Tables: A+B Age: 50-70	Prevalent screen ≥ 0.85	Prevalent screen ≥ 1.0	2.04
		Table: C1 Age: 50-70	Incident screen ≥ 0.85	Incident screen ≥ 1.0	1.66
		Tables: A, B, C1 Age: 50-70	Overall ≥ 0.85	Overall ≥ 1.0	1.72
To maximise the number of small invasive cancers detected	The rate of invasive cancers <15mm in diameter detected	Table: A Age: 50-52	Prevalent screen ≥ 1.5 per 1000	Prevalent screen ≥ 2.0 per 1000	3.8
		Table: C1 Age: 53-70	Incident screen ≥ 1.7 per 1000	Incident screen ≥ 2.5 per 1000	4.0
To minimise the number of women screened who are referred for further tests	a. The % of women who are referred for assessment	Table: A Age: 50-52	Prevalent screen <10%	Prevalent screen <7%	9.9
		Table: C1 Age: 53-70	Incident screen <7%	Incident screen <5%	4.1
	b. The % of women screened who are placed on short-term recall	Tables: A, B, C1, C2 Age: 50-70	<0.5%	$\leq 0.25\%$	0.04
To ensure that the majority of cancers, both palpable and impalpable, are diagnosed non-operatively	The % of women with a non-operative diagnosis by cytology or needle histology after a maximum of 2 visits	Tables: A, B, C1, C2 Age: 50-70	$\geq 80\%$	$\geq 90\%$	95.6
To minimise the number of unnecessary operative procedures	The rate of benign surgical biopsies	Table: A Age: 50-52	Prevalent screen <3.6 per 1000	Prevalent screen <1.8 per 1000	2.3
		Table: C1 Age: 53-70	Incident screen <2.0 per 1000	Incident screen <1.0 per 1000	0.7

North Wales

Objective	Criteria	Calculation	Minimum Standard	Target	Actual
To maximise the number of eligible women who attend for screening	The % of eligible women who attend for screening	Tables: A, B, C1, C2 Age: 50-70	>=70% of invited women to attend for screening	80%	73.5
To maximise the number of cancers detected	a. The rate of invasive cancers detected	Table A Age: 50-52	Prevalent screen >=2.7 per 1000	Prevalent screen >=3.6 per 1000	7.6
		Table C1 Age: 53-70	Incident screen >=3.1 per 1000	Incident screen >=4.2 per 1000	5.9
	b. The rate of non-invasive cancers detected	Table A Age: 50-52	Prevalent screen >=0.4 per 1000		2.2
		Table C1 Age: 53-70	Incident screen >=0.5 per 1000		1.3
	c. Standardised detection ratio (SDR)	Tables: A+B Age: 50-70	Prevalent screen >=0.85	Prevalent screen >=1.0	2.03
		Table: C1 Age: 50-70	Incident screen >=0.85	Incident screen >=1.0	1.46
		Tables: A, B, C1 Age: 50-70	Overall >=0.85	Overall >=1.0	1.55
To maximise the number of small invasive cancers detected	The rate of invasive cancers <15mm in diameter detected	Table: A Age: 50-52	Prevalent screen >=1.5 per 1000	Prevalent screen >=2.0 per 1000	3.8
		Table: C1 Age: 53-70	Incident screen >=1.7 per 1000	Incident screen >=2.5 per 1000	3.7
To minimise the number of women screened who are referred for further tests	a. The % of women who are referred for assessment	Table: A Age: 50-52	Prevalent screen <10%	Prevalent screen <7%	7.2
		Table: C1 Age: 53-70	Incident screen <7%	Incident screen <5%	2.8
	b. The % of women screened who are placed on short-term recall	Tables: A, B, C1, C2 Age: 50-70	<0.5%	<=0.25%	0.01
To ensure that the majority of cancers, both palpable and impalpable, are diagnosed non-operatively	The % of women with a non-operative diagnosis by cytology or needle histology after a maximum of 2 visits	Tables: A, B, C1, C2 Age: 50-70	>=80%	>=90%	97.7
To minimise the number of unnecessary operative procedures	The rate of benign surgical biopsies	Table: A Age: 50-52	Prevalent screen <3.6 per 1000	Prevalent screen <1.8 per 1000	0.6
		Table: C1 Age: 53-70	Incident screen <2.0 per 1000	Incident screen <1.0 per 1000	0.3

South East Wales

Objective	Criteria	Calculation	Minimum Standard	Target	Actual
To maximise the number of eligible women who attend for screening	The % of eligible women who attend for screening	Tables: A, B, C1, C2 Age: 50-70	$\geq 70\%$ of invited women to attend for screening	80%	71.9
To maximise the number of cancers detected	a. The rate of invasive cancers detected	Table A Age: 50-52	Prevalent screen ≥ 2.7 per 1000	Prevalent screen ≥ 3.6 per 1000	6.5
		Table C1 Age: 53-70	Incident screen ≥ 3.1 per 1000	Incident screen ≥ 4.2 per 1000	6.7
	b. The rate of non-invasive cancers detected	Table A Age: 50-52	Prevalent screen ≥ 0.4 per 1000		2.2
		Table C1 Age: 53-70	Incident screen ≥ 0.5 per 1000		2.1
	c. Standardised detection ratio (SDR)	Tables: A+B Age: 50-70	Prevalent screen ≥ 0.85	Prevalent screen ≥ 1.0	1.77
		Table: C1 Age: 50-70	Incident screen ≥ 0.85	Incident screen ≥ 1.0	1.61
		Tables: A, B, C1 Age: 50-70	Overall ≥ 0.85	Overall ≥ 1.0	1.64
To maximise the number of small invasive cancers detected	The rate of invasive cancers <15mm in diameter detected	Table: A Age: 50-52	Prevalent screen ≥ 1.5 per 1000	Prevalent screen ≥ 2.0 per 1000	3.2
		Table: C1 Age: 53-70	Incident screen ≥ 1.7 per 1000	Incident screen ≥ 2.5 per 1000	4.0
To minimise the number of women screened who are referred for further tests	a. The % of women who are referred for assessment	Table: A Age: 50-52	Prevalent screen <10%	Prevalent screen <7%	10.4
		Table: C1 Age: 53-70	Incident screen <7%	Incident screen <5%	4.8
	b. The % of women screened who are placed on short-term recall	Tables: A, B, C1, C2 Age: 50-70	<0.5%	$\leq 0.25\%$	0.05
To ensure that the majority of cancers, both palpable and impalpable, are diagnosed non-operatively	The % of women with a non-operative diagnosis by cytology or needle histology after a maximum of 2 visits	Tables: A, B, C1, C2 Age: 50-70	$\geq 80\%$	$\geq 90\%$	95.2
To minimise the number of unnecessary operative procedures	The rate of benign surgical biopsies	Table: A Age: 50-52	Prevalent screen <3.6 per 1000	Prevalent screen <1.8 per 1000	2.8
		Table: C1 Age: 53-70	Incident screen <2.0 per 1000	Incident screen <1.0 per 1000	0.7

South West Wales

Objective	Criteria	Calculation	Minimum Standard	Target	Actual
To maximise the number of eligible women who attend for screening	The % of eligible women who attend for screening	Tables: A, B, C1, C2 Age: 50-70	>=70% of invited women to attend for screening	80%	75.6
To maximise the number of cancers detected	a. The rate of invasive cancers detected	Table A Age: 50-52	Prevalent screen >=2.7 per 1000	Prevalent screen >=3.6 per 1000	11.6
		Table C1 Age: 53-70	Incident screen >=3.1 per 1000	Incident screen >=4.2 per 1000	9.0
	b. The rate of non-invasive cancers detected	Table A Age: 50-52	Prevalent screen >=0.4 per 1000		5.0
		Table C1 Age: 53-70	Incident screen >=0.5 per 1000		3.0
	c. Standardised detection ratio (SDR)	Tables: A+B Age: 50-70	Prevalent screen >=0.85	Prevalent screen >=1.0	2.75
		Table: C1 Age: 50-70	Incident screen >=0.85	Incident screen >=1.0	2.13
		Tables: A, B, C1 Age: 50-70	Overall >=0.85	Overall >=1.0	2.22
To maximise the number of small invasive cancers detected	The rate of invasive cancers <15mm in diameter detected	Table: A Age: 50-52	Prevalent screen >=1.5 per 1000	Prevalent screen >=2.0 per 1000	5.0
		Table: C1 Age: 53-70	Incident screen >=1.7 per 1000	Incident screen >=2.5 per 1000	4.8
To minimise the number of women screened who are referred for further tests	a. The % of women who are referred for assessment	Table: A Age: 50-52	Prevalent screen <10%	Prevalent screen <7%	13.4
		Table: C1 Age: 53-70	Incident screen <7%	Incident screen <5%	5.1
	b. The % of women screened who are placed on short-term recall	Tables: A, B, C1, C2 Age: 50-70	<0.5%	<=0.25%	0.09
To ensure that the majority of cancers, both palpable and impalpable, are diagnosed non-operatively	The % of women with a non-operative diagnosis by cytology or needle histology after a maximum of 2 visits	Tables: A, B, C1, C2 Age: 50-70	>=80%	>=90%	93.8
To minimise the number of unnecessary operative procedures	The rate of benign surgical biopsies	Table: A Age: 50-52	Prevalent screen <3.6 per 1000	Prevalent screen <1.8 per 1000	3.9
		Table: C1 Age: 53-70	Incident screen <2.0 per 1000	Incident screen <1.0 per 1000	1.4

Appendix B - 2011-12 KC62 Wales

Wales (Table T – all invitations and screens)

Part T1: Invitations & outcomes					Outcome of initial screen				Final outcome of assessment				
Age at 1 st offered appt	Line no.	No. of women invited	Lost to follow up after tech inad scr mammo	No. screened tech ad	Not known	Routine recall	Early recall	Referred for assmt	Failed to attend for assmt	Outcome of assmt not known	Routine recall	Early recall	Cancer
		(1)	(2)	(3)	(4)	(5)	(6)	(7)	(8)	(9)	(10)	(11)	(12)
<=44	01	0	0	0	0	0	0	0	0	0	0	0	0
45-49	02	2868	9	2037	0	1867	0	170	0	0	157	5	8
50-52	03	15705	21	11634	0	10544	0	1090	9	0	951	10	120
53-54	04	10557	9	7917	0	7510	0	407	5	2	338	10	52
55-59	05	24970	27	18689	0	17891	0	798	6	2	640	3	147
60-64	06	26863	22	20382	0	19522	0	860	8	0	633	17	202
65-69	07	22033	24	16303	0	15561	0	742	5	0	546	10	181
70	08	2034	3	1749	0	1665	0	84	0	0	59	0	25
71-74	09	41	1	2247	0	2124	0	123	0	0	84	1	38
>=75	10	1	5	1897	0	1792	0	105	0	0	61	1	43
50-70	11	102162	106	76674	0	72693	0	3981	33	4	3167	50	727
All ages	12	105072	121	82855	0	78476	0	4379	33	4	3469	57	816

Part T2: Assessment			Outcome of assessment up to and including cytology and diagnostic histology										
Age at 1 st offered appt	Line no.	Cancer identified without cyt/hist	Up to and including cytology/core biopsy						Up to and including open biopsy				
			Ref for cyt/core bx	Not referred for open biopsy				Ref for open bx	Total ref for open bx	No/inad result	Benign/normal		Cancer
				No/inad result	Routine recall	Early recall	Cancer				Routine recall	Early recall	
		(13)	(14)	(15)	(16)	(17)	(18)	(19)	(20)	(21)	(22)	(23)	(24)
<=44	13	0	0	0	0	0	0	0	0	0	0	0	0
45-49	14	0	66	0	47	2	8	9	9	0	9	0	0
50-52	15	0	404	0	253	5	109	37	37	0	26	0	11
53-54	16	0	141	0	75	2	50	14	15	0	12	0	2
55-59	17	0	263	0	97	1	142	23	23	0	17	0	5
60-64	18	0	339	0	119	6	195	19	19	0	10	2	7
65-69	19	0	300	0	109	3	174	14	14	0	7	0	7
70	20	0	36	0	11	0	25	0	0	0	0	0	0
71-74	21	0	54	0	14	0	37	3	3	0	2	0	1
>=75	22	0	60	0	16	0	42	2	2	0	1	0	1
50-70	23	0	1483	0	664	17	695	107	108	0	72	2	32
All ages	24	0	1663	0	741	19	782	121	122	0	84	2	34

Wales (Table T – all invitations and screens)

Part T3: Cancers		Cancers diagnosed by cytology/histology										
Age at 1 st offered appt	Line no.	Total no. with cancer	Invasive status unknown	Non-invasive or possibly micro-invasive	Micro-invasive	Invasive size						Total invasive
						<10mm	>=10mm & <15mm	>=15mm & <20mm	>=20mm & <50mm	>=50mm	Size unknown	
		(25)	(26)	(27)	(28)	(29)	(30)	(31)	(32)	(33)	(34)	(35)
<=44	25	0	0	0	0	0	0	0	0	0	0	0
45-49	26	8	0	2	1	1	1	1	1	1	0	5
50-52	27	120	0	28	0	26	15	17	29	3	2	92
53-54	28	52	0	17	0	10	8	3	13	0	1	35
55-59	29	147	0	37	1	25	34	19	24	3	4	109
60-64	30	202	0	40	1	49	44	30	30	2	6	161
65-69	31	181	0	33	1	39	47	30	26	0	5	147
70	32	25	0	3	0	7	3	6	4	1	1	22
71-74	33	38	0	4	1	11	7	7	6	0	2	33
>=75	34	43	0	10	0	11	7	6	4	0	5	33
50-70	35	727	0	158	3	156	151	105	126	9	19	566
All ages	36	816	0	174	5	179	166	119	137	10	26	637

Wales (Table A – first invitation for routine screening)

Part A1: Invitations & outcomes					Outcome of initial screen				Final outcome of assessment				
Age at 1 st offered appt	Line no.	No. of women invited	Lost to follow up after tech inad scr mammo	No. screened tech ad	Not known	Routine recall	Early recall	Referred for assmt	Failed to attend for assmt	Outcome of assmt not known	Routine recall	Early recall	Cancer
		(1)	(2)	(3)	(4)	(5)	(6)	(7)	(8)	(9)	(10)	(11)	(12)
<=44	01	0	0	0	0	0	0	0	0	0	0	0	0
45-49	02	2858	9	2017	0	1849	0	168	0	0	156	4	8
50-52	03	13258	18	9584	0	8635	0	949	8	0	832	8	101
53-54	04	331	0	148	0	137	0	11	0	0	9	1	1
55-59	05	261	0	40	0	37	0	3	1	0	2	0	0
60-64	06	178	0	26	0	21	0	5	0	0	4	0	1
65-69	07	115	0	15	0	14	0	1	0	0	0	0	1
70	08	12	0	1	0	0	0	1	0	0	0	0	1
71-74	09	1	0	0	0	0	0	0	0	0	0	0	0
>=75	10	0	0	0	0	0	0	0	0	0	0	0	0
50-70	11	14155	18	9814	0	8844	0	970	9	0	847	9	105
All ages	12	17014	27	11831	0	10693	0	1138	9	0	1003	13	113

Part A2: Assessment				Outcome of assessment up to and including cytology and diagnostic histology									
Age at 1 st offered appt	Line no.	Cancer identified without cyt/hist	Ref for cyt/core bx	Up to and including cytology/core biopsy					Up to and including open biopsy				
				No/inad result	Not referred for open biopsy			Ref for open bx	Total ref for open bx	No/inad result	Benign/normal		Cancer
					Routine recall	Early recall	Cancer				Routine recall	Early recall	
		(13)	(14)	(15)	(16)	(17)	(18)	(19)	(20)	(21)	(22)	(23)	(24)
<=44	13	0	0	0	0	0	0	0	0	0	0	0	0
45-49	14	0	65	0	46	2	8	9	9	0	9	0	0
50-52	15	0	355	0	227	5	91	32	32	0	22	0	10
53-54	16	0	5	0	4	0	1	0	0	0	0	0	0
55-59	17	0	0	0	0	0	0	0	0	0	0	0	0
60-64	18	0	4	0	3	0	1	0	0	0	0	0	0
65-69	19	0	1	0	0	0	1	0	0	0	0	0	0
70	20	0	1	0	0	0	1	0	0	0	0	0	0
71-74	21	0	0	0	0	0	0	0	0	0	0	0	0
>=75	22	0	0	0	0	0	0	0	0	0	0	0	0
50-70	23	0	366	0	234	5	95	32	32	0	22	0	10
All ages	24	0	431	0	280	7	103	41	41	0	31	0	10

Wales (Table A – first invitation for routine screening)

Part A3: Cancers		Cancers diagnosed by cytology/histology										
Age at 1 st offered appt	Line no.	Total no. with cancer	Invasive status unknown	Non-invasive or possibly micro-invasive	Micro-invasive	Invasive size					Size unknown	Total invasive
						<10mm	>=10mm & <15mm	>=15mm & <20mm	>=20mm & <50mm	>=50mm		
		(25)	(26)	(27)	(28)	(29)	(30)	(31)	(32)	(33)	(34)	(35)
<=44	25	0	0	0	0	0	0	0	0	0	0	0
45-49	26	8	0	2	1	1	1	1	1	1	0	5
50-52	27	101	0	26	0	24	12	14	22	1	2	75
53-54	28	1	0	1	0	0	0	0	0	0	0	0
55-59	29	0	0	0	0	0	0	0	0	0	0	0
60-64	30	1	0	1	0	0	0	0	0	0	0	0
65-69	31	1	0	0	0	0	0	1	0	0	0	1
70	32	1	0	0	0	0	0	1	0	0	0	1
71-74	33	0	0	0	0	0	0	0	0	0	0	0
>=75	34	0	0	0	0	0	0	0	0	0	0	0
50-70	35	105	0	28	0	24	12	16	22	1	2	77
All ages	36	113	0	30	1	25	13	17	23	2	2	82

Wales (Table B – routine invitation to previous non-attenders)

Part B1: Invitations & outcomes					Outcome of initial screen				Final outcome of assessment				
Age at 1 st offered appt	Line no.	No. of women invited	Lost to follow up after tech inad scr mammo	No. screened tech ad	Not known	Routine recall	Early recall	Referred for assmt	Failed to attend for assmt	Outcome of assmt not known	Routine recall	Early recall	Cancer
		(1)	(2)	(3)	(4)	(5)	(6)	(7)	(8)	(9)	(10)	(11)	(12)
<=44	01	0	0	0	0	0	0	0	0	0	0	0	0
45-49	02	1	0	0	0	0	0	0	0	0	0	0	0
50-52	03	637	1	221	0	195	0	26	0	0	24	0	2
53-54	04	2287	5	700	0	633	0	67	2	1	52	3	9
55-59	05	3624	6	472	0	428	0	44	0	1	35	0	8
60-64	06	2558	3	170	0	155	0	15	0	0	14	0	1
65-69	07	1718	1	67	0	62	0	5	1	0	3	0	1
70	08	115	0	4	0	4	0	0	0	0	0	0	0
71-74	09	2	0	0	0	0	0	0	0	0	0	0	0
>=75	10	0	0	0	0	0	0	0	0	0	0	0	0
50-70	11	10939	16	1634	0	1477	0	157	3	2	128	3	21
All ages	12	10942	16	1634	0	1477	0	157	3	2	128	3	21

Part B2: Assessment				Outcome of assessment up to and including cytology and diagnostic histology									
Age at 1 st offered appt	Line no.	Cancer identified without cyt/hist	Ref for cyt/core bx	Up to and including cytology/core biopsy					Up to and including open biopsy				
				No/inad result	Not referred for open biopsy			Ref for open bx	Total ref for open bx	No/inad result	Benign/normal		Cancer
					Routine recall	Early recall	Cancer				Routine recall	Early recall	
		(13)	(14)	(15)	(16)	(17)	(18)	(19)	(20)	(21)	(22)	(23)	(24)
<=44	13	0	0	0	0	0	0	0	0	0	0	0	0
45-49	14	0	0	0	0	0	0	0	0	0	0	0	0
50-52	15	0	13	0	10	0	2	1	1	0	1	0	0
53-54	16	0	31	0	19	1	8	3	4	0	2	0	1
55-59	17	0	19	0	9	0	7	3	3	0	1	0	1
60-64	18	0	5	0	4	0	1	0	0	0	0	0	0
65-69	19	0	3	0	2	0	1	0	0	0	0	0	0
70	20	0	0	0	0	0	0	0	0	0	0	0	0
71-74	21	0	0	0	0	0	0	0	0	0	0	0	0
>=75	22	0	0	0	0	0	0	0	0	0	0	0	0
50-70	23	0	71	0	44	1	19	7	8	0	4	0	2
All ages	24	0	71	0	44	1	19	7	8	0	4	0	2

Wales (Table B – routine invitation to previous non-attenders)

Part B3: Cancers		Cancers diagnosed by cytology/histology										
Age at 1 st offered appt	Line no.	Total no. with cancer	Invasive status unknown	Non-invasive or possibly micro-invasive	Micro-invasive	Invasive size						Total invasive
						<10mm	>=10mm & <15mm	>=15mm & <20mm	>=20mm & <50mm	>=50mm	Size unknown	
		(25)	(26)	(27)	(28)	(29)	(30)	(31)	(32)	(33)	(34)	(35)
<=44	25	0	0	0	0	0	0	0	0	0	0	0
45-49	26	0	0	0	0	0	0	0	0	0	0	0
50-52	27	2	0	0	0	0	0	0	1	1	0	2
53-54	28	9	0	4	0	1	1	0	2	0	1	5
55-59	29	8	0	2	0	3	0	1	1	0	1	6
60-64	30	1	0	0	0	0	0	1	0	0	0	1
65-69	31	1	0	0	0	1	0	0	0	0	0	1
70	32	0	0	0	0	0	0	0	0	0	0	0
71-74	33	0	0	0	0	0	0	0	0	0	0	0
>=75	34	0	0	0	0	0	0	0	0	0	0	0
50-70	35	21	0	6	0	5	1	2	4	1	2	15
All ages	36	21	0	6	0	5	1	2	4	1	2	15

Wales (Table C1 – routine invitation to previous attenders, last screen within 5 years)

Part C1-1: Invitations & outcomes					Outcome of initial screen				Final outcome of assessment				
Age at 1 st offered appt	Line no.	No. of women invited	Lost to follow up after tech inad scr mammo	No. screened tech ad	Not known	Routine recall	Early recall	Referred for assmt	Failed to attend for assmt	Outcome of assmt not known	Routine recall	Early recall	Cancer
		(1)	(2)	(3)	(4)	(5)	(6)	(7)	(8)	(9)	(10)	(11)	(12)
<=44	01	0	0	0	0	0	0	0	0	0	0	0	0
45-49	02	5	0	5	0	4	0	1	0	0	1	0	0
50-52	03	1759	2	1540	0	1462	0	78	0	0	65	0	13
53-54	04	7813	3	6779	0	6484	0	295	2	0	253	3	37
55-59	05	18878	16	16682	0	16046	0	636	5	0	509	2	120
60-64	06	20814	16	18650	0	17895	0	755	7	0	561	8	179
65-69	07	16965	16	15062	0	14409	0	653	3	0	481	6	163
70	08	1585	1	1360	0	1301	0	59	0	0	39	0	20
71-74	09	28	0	19	0	18	0	1	0	0	0	0	1
>=75	10	0	0	0	0	0	0	0	0	0	0	0	0
50-70	11	67814	54	60073	0	57597	0	2476	17	0	1908	19	532
All ages	12	67847	54	60097	0	57619	0	2478	17	0	1909	19	533

Part C1-2: Assessment				Outcome of assessment up to and including cytology and diagnostic histology									
Age at 1 st offered appt	Line no.	Cancer identified without cyt/hist	Ref for cyt/core bx	Up to and including cytology/core biopsy					Up to and including open biopsy				
				No/inad result	Not referred for open biopsy			Ref for open bx	Total ref for open bx	No/inad result	Benign/normal		Cancer
					Routine recall	Early recall	Cancer				Routine recall	Early recall	
		(13)	(14)	(15)	(16)	(17)	(18)	(19)	(20)	(21)	(22)	(23)	(24)
<=44	13	0	0	0	0	0	0	0	0	0	0	0	0
45-49	14	0	1	0	1	0	0	0	0	0	0	0	0
50-52	15	0	22	0	7	0	13	2	2	0	2	0	0
53-54	16	0	94	0	47	1	36	10	10	0	9	0	1
55-59	17	0	204	0	72	0	116	16	16	0	12	0	4
60-64	18	0	292	0	97	4	172	19	19	0	10	2	7
65-69	19	0	267	0	95	2	156	14	14	0	7	0	7
70	20	0	24	0	4	0	20	0	0	0	0	0	0
71-74	21	0	1	0	0	0	1	0	0	0	0	0	0
>=75	22	0	0	0	0	0	0	0	0	0	0	0	0
50-70	23	0	903	0	322	7	513	61	61	0	40	2	19
All ages	24	0	905	0	323	7	514	61	61	0	40	2	19

Wales (Table C1 – routine invitation to previous attenders, last screen within 5 years)

Part C1-3: Cancers		Cancers diagnosed by cytology/histology										
Age at 1 st offered appt	Line no.	Total no. with cancer	Invasive status unknown	Non-invasive or possibly micro-invasive	Micro-invasive	Invasive size						Total invasive
						<10mm	>=10mm & <15mm	>=15mm & <20mm	>=20mm & <50mm	>=50mm	Size unknown	
		(25)	(26)	(27)	(28)	(29)	(30)	(31)	(32)	(33)	(34)	(35)
<=44	25	0	0	0	0	0	0	0	0	0	0	0
45-49	26	0	0	0	0	0	0	0	0	0	0	0
50-52	27	13	0	2	0	1	2	3	5	0	0	11
53-54	28	37	0	11	0	8	7	3	8	0	0	26
55-59	29	120	0	31	1	20	30	13	20	2	3	88
60-64	30	179	0	38	1	46	40	22	26	1	5	140
65-69	31	163	0	32	1	38	39	26	23	0	4	130
70	32	20	0	2	0	6	3	4	3	1	1	18
71-74	33	1	0	0	0	0	0	1	0	0	0	1
>=75	34	0	0	0	0	0	0	0	0	0	0	0
50-70	35	532	0	116	3	119	121	71	85	4	13	413
All ages	36	533	0	116	3	119	121	72	85	4	13	414

Wales (Table C2 – routine invitation to previous attenders, last screen more than 5 years previously)

Part C2-1: Invitations & outcomes					Outcome of initial screen				Final outcome of assessment				
Age at 1 st offered appt	Line no.	No. of women invited	Lost to follow up after tech inad scr mammo	No. screened tech ad	Not known	Routine recall	Early recall	Referred for assmt	Failed to attend for assmt	Outcome of assmt not known	Routine recall	Early recall	Cancer
		(1)	(2)	(3)	(4)	(5)	(6)	(7)	(8)	(9)	(10)	(11)	(12)
<=44	01	0	0	0	0	0	0	0	0	0	0	0	0
45-49	02	3	0	3	0	3	0	0	0	0	0	0	0
50-52	03	39	0	13	0	11	0	2	0	0	1	0	1
53-54	04	117	0	45	0	41	0	4	0	0	4	0	0
55-59	05	2194	3	1014	0	940	0	74	0	0	60	0	14
60-64	06	3299	3	1128	0	1077	0	51	0	0	34	2	15
65-69	07	3222	6	910	0	853	0	57	1	0	42	0	14
70	08	320	1	73	0	68	0	5	0	0	5	0	0
71-74	09	9	0	2	0	2	0	0	0	0	0	0	0
>=75	10	0	0	0	0	0	0	0	0	0	0	0	0
50-70	11	9191	13	3183	0	2990	0	193	1	0	146	2	44
All ages	12	9203	13	3188	0	2995	0	193	1	0	146	2	44

Part C2-2: Assessment				Outcome of assessment up to and including cytology and diagnostic histology									
Age at 1 st offered appt	Line no.	Cancer identified without cyt/hist	Ref for cyt/core bx	Up to and including cytology/core biopsy					Up to and including open biopsy				
				No/inad result	Not referred for open biopsy			Ref for open bx	Total ref for open bx	No/inad result	Benign/normal		Cancer
					Routine recall	Early recall	Cancer				Routine recall	Early recall	
		(13)	(14)	(15)	(16)	(17)	(18)	(19)	(20)	(21)	(22)	(23)	(24)
<=44	13	0	0	0	0	0	0	0	0	0	0	0	0
45-49	14	0	0	0	0	0	0	0	0	0	0	0	0
50-52	15	0	2	0	1	0	1	0	0	0	0	0	0
53-54	16	0	2	0	2	0	0	0	0	0	0	0	0
55-59	17	0	27	0	11	0	14	2	2	0	2	0	0
60-64	18	0	28	0	11	2	15	0	0	0	0	0	0
65-69	19	0	23	0	9	0	14	0	0	0	0	0	0
70	20	0	3	0	3	0	0	0	0	0	0	0	0
71-74	21	0	0	0	0	0	0	0	0	0	0	0	0
>=75	22	0	0	0	0	0	0	0	0	0	0	0	0
50-70	23	0	85	0	37	2	44	2	2	0	2	0	0
All ages	24	0	85	0	37	2	44	2	2	0	2	0	0

Wales (Table C2 – routine invitation to previous attenders, last screen more than 5 years previously)

Part C2-3: Cancers		Cancers diagnosed by cytology/histology										
Age at 1 st offered appt	Line no.	Total no. with cancer	Invasive status unknown	Non-invasive or possibly micro-invasive	Micro-invasive	Invasive size						Total invasive
						<10mm	>=10mm & <15mm	>=15mm & <20mm	>=20mm & <50mm	>=50mm	Size unknown	
		(25)	(26)	(27)	(28)	(29)	(30)	(31)	(32)	(33)	(34)	(35)
<=44	25	0	0	0	0	0	0	0	0	0	0	0
45-49	26	0	0	0	0	0	0	0	0	0	0	0
50-52	27	1	0	0	0	0	1	0	0	0	0	1
53-54	28	0	0	0	0	0	0	0	0	0	0	0
55-59	29	14	0	3	0	1	3	5	1	1	0	11
60-64	30	15	0	1	0	2	3	6	2	0	1	14
65-69	31	14	0	0	0	0	7	3	3	0	1	14
70	32	0	0	0	0	0	0	0	0	0	0	0
71-74	33	0	0	0	0	0	0	0	0	0	0	0
>=75	34	0	0	0	0	0	0	0	0	0	0	0
50-70	35	44	0	4	0	3	14	14	6	1	2	40
All ages	36	44	0	4	0	3	14	14	6	1	2	40

Wales (Table D – early recall)

Part D1: Invitations & outcomes					Outcome of initial screen				Final outcome of assessment				
Age at 1 st offered appt	Line no.	No. of women invited	Lost to follow up after tech inad scr mammo	No. screened tech ad	Not known	Routine recall	Early recall	Referred for assmt	Failed to attend for assmt	Outcome of assmt not known	Routine recall	Early recall	Cancer
		(1)	(2)	(3)	(4)	(5)	(6)	(7)	(8)	(9)	(10)	(11)	(12)
<=44	01	0	0	0	0	0	0	0	0	0	0	0	0
45-49	02	1	0	1	0	0	0	1	0	0	0	1	0
50-52	03	12	0	12	0	0	0	12	0	0	10	2	0
53-54	04	9	0	9	0	0	0	9	0	1	5	3	0
55-59	05	13	0	13	0	0	0	13	0	1	10	1	1
60-64	06	14	0	14	0	0	0	14	0	0	7	7	0
65-69	07	13	0	13	0	0	0	13	0	0	9	4	0
70	08	2	0	2	0	0	0	2	0	0	2	0	0
71-74	09	1	0	1	0	0	0	1	0	0	0	0	1
>=75	10	1	0	1	0	0	0	1	0	0	0	1	0
50-70	11	63	0	63	0	0	0	63	0	2	43	17	1
All ages	12	66	0	66	0	0	0	66	0	2	43	19	2

Part D2: Assessment			Outcome of assessment up to and including cytology and diagnostic histology										
Age at 1 st offered appt	Line no.	Cancer identified without cyt/hist	Up to and including cytology/core biopsy						Up to and including open biopsy				
			Ref for cyt/core bx	Not referred for open biopsy				Ref for open bx	Total ref for open bx	No/inad result	Benign/normal		Cancer
				No/inad result	Routine recall	Early recall	Cancer				Routine recall	Early recall	
		(13)	(14)	(15)	(16)	(17)	(18)	(19)	(20)	(21)	(22)	(23)	(24)
<=44	13	0	0	0	0	0	0	0	0	0	0	0	0
45-49	14	0	0	0	0	0	0	0	0	0	0	0	0
50-52	15	0	1	0	1	0	0	0	0	0	0	0	0
53-54	16	0	2	0	2	0	0	0	0	0	0	0	0
55-59	17	0	2	0	0	1	1	0	0	0	0	0	0
60-64	18	0	1	0	1	0	0	0	0	0	0	0	0
65-69	19	0	1	0	0	1	0	0	0	0	0	0	0
70	20	0	0	0	0	0	0	0	0	0	0	0	0
71-74	21	0	1	0	0	0	1	0	0	0	0	0	0
>=75	22	0	0	0	0	0	0	0	0	0	0	0	0
50-70	23	0	7	0	4	2	1	0	0	0	0	0	0
All ages	24	0	8	0	4	2	2	0	0	0	0	0	0

Wales (Table D – early recall)

Part D3: Cancers		Cancers diagnosed by cytology/histology										
Age at 1 st offered appt	Line no.	Total no. with cancer	Invasive status unknown	Non-invasive or possibly micro-invasive	Micro-invasive	Invasive size						Total invasive
						<10mm	>=10mm & <15mm	>=15mm & <20mm	>=20mm & <50mm	>=50mm	Size unknown	
		(25)	(26)	(27)	(28)	(29)	(30)	(31)	(32)	(33)	(34)	(35)
<=44	25	0	0	0	0	0	0	0	0	0	0	0
45-49	26	0	0	0	0	0	0	0	0	0	0	0
50-52	27	0	0	0	0	0	0	0	0	0	0	0
53-54	28	0	0	0	0	0	0	0	0	0	0	0
55-59	29	1	0	1	0	0	0	0	0	0	0	0
60-64	30	0	0	0	0	0	0	0	0	0	0	0
65-69	31	0	0	0	0	0	0	0	0	0	0	0
70	32	0	0	0	0	0	0	0	0	0	0	0
71-74	33	1	0	0	0	0	0	0	1	0	0	1
>=75	34	0	0	0	0	0	0	0	0	0	0	0
50-70	35	1	0	1	0	0	0	0	0	0	0	0
All ages	36	2	0	1	0	0	0	0	1	0	0	1

Wales (Table E – self/GP referral of women not previously screened)

Part E1: Invitations & outcomes					Outcome of initial screen				Final outcome of assessment				
Age at 1 st offered appt	Line no.	No. of women invited	Lost to follow up after tech inad scr mammo	No. screened tech ad	Not known	Routine recall	Early recall	Referred for assmt	Failed to attend for assmt	Outcome of assmt not known	Routine recall	Early recall	Cancer
		(1)	(2)	(3)	(4)	(5)	(6)	(7)	(8)	(9)	(10)	(11)	(12)
<=44	01	0	0	0	0	0	0	0	0	0	0	0	0
45-49	02	0	0	11	0	11	0	0	0	0	0	0	0
50-52	03	0	0	222	0	200	0	22	1	0	18	0	3
53-54	04	0	0	89	0	76	0	13	1	0	10	0	2
55-59	05	0	1	95	0	89	0	6	0	0	5	0	1
60-64	06	0	0	59	0	53	0	6	1	0	4	0	1
65-69	07	0	0	27	0	25	0	2	0	0	2	0	0
70	08	0	0	6	0	6	0	0	0	0	0	0	0
71-74	09	0	0	16	0	13	0	3	0	0	3	0	0
>=75	10	0	1	51	0	46	0	5	0	0	2	0	3
50-70	11	0	1	498	0	449	0	49	3	0	39	0	7
All ages	12	0	2	576	0	519	0	57	3	0	44	0	10

Part E2: Assessment				Outcome of assessment up to and including cytology and diagnostic histology									
Age at 1 st offered appt	Line no.	Cancer identified without cyt/hist	Ref for cyt/core bx	Up to and including cytology/core biopsy					Up to and including open biopsy				
				Not referred for open biopsy				Ref for open bx	Total ref for open bx	No/inad result	Benign/normal		Cancer
				No/inad result	Routine recall	Early recall	Cancer				Routine recall	Early recall	
		(13)	(14)	(15)	(16)	(17)	(18)	(19)	(20)	(21)	(22)	(23)	(24)
<=44	13	0	0	0	0	0	0	0	0	0	0	0	0
45-49	14	0	0	0	0	0	0	0	0	0	0	0	0
50-52	15	0	11	0	7	0	2	2	2	0	1	0	1
53-54	16	0	4	0	1	0	2	1	1	0	1	0	0
55-59	17	0	3	0	2	0	1	0	0	0	0	0	0
60-64	18	0	2	0	1	0	1	0	0	0	0	0	0
65-69	19	0	0	0	0	0	0	0	0	0	0	0	0
70	20	0	0	0	0	0	0	0	0	0	0	0	0
71-74	21	0	0	0	0	0	0	0	0	0	0	0	0
>=75	22	0	4	0	1	0	3	0	0	0	0	0	0
50-70	23	0	20	0	11	0	6	3	3	0	2	0	1
All ages	24	0	24	0	12	0	9	3	3	0	2	0	1

Wales (Table E – self/GP referral of women not previously screened)

Part E3: Cancers		Cancers diagnosed by cytology/histology										
Age at 1 st offered appt	Line no.	Total no. with cancer	Invasive status unknown	Non-invasive or possibly micro-invasive	Micro-invasive	Invasive size						Total invasive
						<10mm	>=10mm & <15mm	>=15mm & <20mm	>=20mm & <50mm	>=50mm	Size unknown	
		(25)	(26)	(27)	(28)	(29)	(30)	(31)	(32)	(33)	(34)	(35)
<=44	25	0	0	0	0	0	0	0	0	0	0	0
45-49	26	0	0	0	0	0	0	0	0	0	0	0
50-52	27	3	0	0	0	1	0	0	1	1	0	3
53-54	28	2	0	1	0	0	0	0	1	0	0	1
55-59	29	1	0	0	0	1	0	0	0	0	0	1
60-64	30	1	0	0	0	0	0	0	1	0	0	1
65-69	31	0	0	0	0	0	0	0	0	0	0	0
70	32	0	0	0	0	0	0	0	0	0	0	0
71-74	33	0	0	0	0	0	0	0	0	0	0	0
>=75	34	3	0	1	0	2	0	0	0	0	0	2
50-70	35	7	0	1	0	2	0	0	3	1	0	6
All ages	36	10	0	2	0	4	0	0	3	1	0	8

Wales (Table F1 – self/GP referrals of women previously screened, last screen within 5 years)

Part F1-1: Invitations & outcomes					Outcome of initial screen				Final outcome of assessment				
Age at 1 st offered appt	Line no.	No. of women invited	Lost to follow up after tech inad scr mammo	No. screened tech ad	Not known	Routine recall	Early recall	Referred for assmt	Failed to attend for assmt	Outcome of assmt not known	Routine recall	Early recall	Cancer
		(1)	(2)	(3)	(4)	(5)	(6)	(7)	(8)	(9)	(10)	(11)	(12)
<=44	01	0	0	0	0	0	0	0	0	0	0	0	0
45-49	02	0	0	0	0	0	0	0	0	0	0	0	0
50-52	03	0	0	42	0	41	0	1	0	0	1	0	0
53-54	04	0	1	146	0	138	0	8	0	0	5	0	3
55-59	05	0	1	327	0	305	0	22	0	0	19	0	3
60-64	06	0	0	264	0	254	0	10	0	0	7	0	3
65-69	07	0	1	157	0	148	0	9	0	0	7	0	2
70	08	0	1	286	0	271	0	15	0	0	11	0	4
71-74	09	0	1	2032	0	1925	0	107	0	0	74	1	32
>=75	10	0	1	1428	0	1367	0	61	0	0	41	0	20
50-70	11	0	4	1222	0	1157	0	65	0	0	50	0	15
All ages	12	0	6	4682	0	4449	0	233	0	0	165	1	67

Part F1-2: Assessment			Outcome of assessment up to and including cytology and diagnostic histology										
Age at 1 st offered appt	Line no.	Cancer identified without cyt/hist	Up to and including cytology/core biopsy						Up to and including open biopsy				
			Ref for cyt/core bx	Not referred for open biopsy				Ref for open bx	Total ref for open bx	No/inad result	Benign/normal		Cancer
				No/inad result	Routine recall	Early recall	Cancer				Routine recall	Early recall	
		(13)	(14)	(15)	(16)	(17)	(18)	(19)	(20)	(21)	(22)	(23)	(24)
<=44	13	0	0	0	0	0	0	0	0	0	0	0	0
45-49	14	0	0	0	0	0	0	0	0	0	0	0	0
50-52	15	0	0	0	0	0	0	0	0	0	0	0	0
53-54	16	0	3	0	0	0	3	0	0	0	0	0	0
55-59	17	0	8	0	3	0	3	2	2	0	2	0	0
60-64	18	0	4	0	1	0	3	0	0	0	0	0	0
65-69	19	0	4	0	2	0	2	0	0	0	0	0	0
70	20	0	8	0	4	0	4	0	0	0	0	0	0
71-74	21	0	47	0	13	0	31	3	3	0	2	0	1
>=75	22	0	31	0	10	0	20	1	1	0	1	0	0
50-70	23	0	27	0	10	0	15	2	2	0	2	0	0
All ages	24	0	105	0	33	0	66	6	6	0	5	0	1

Wales (Table F1 – self/GP referrals of women previously screened, last screen within 5 years)

Part F1-3: Cancers		Cancers diagnosed by cytology/histology										
Age at 1 st offered appt	Line no.	Total no. with cancer	Invasive status unknown	Non-invasive or possibly micro-invasive	Micro-invasive	Invasive size						Total invasive
						<10mm	>=10mm & <15mm	>=15mm & <20mm	>=20mm & <50mm	>=50mm	Size unknown	
		(25)	(26)	(27)	(28)	(29)	(30)	(31)	(32)	(33)	(34)	(35)
<=44	25	0	0	0	0	0	0	0	0	0	0	0
45-49	26	0	0	0	0	0	0	0	0	0	0	0
50-52	27	0	0	0	0	0	0	0	0	0	0	0
53-54	28	3	0	0	0	1	0	0	2	0	0	3
55-59	29	3	0	0	0	0	1	0	2	0	0	3
60-64	30	3	0	0	0	1	0	0	1	1	0	3
65-69	31	2	0	1	0	0	1	0	0	0	0	1
70	32	4	0	1	0	1	0	1	1	0	0	3
71-74	33	32	0	4	1	10	7	4	4	0	2	27
>=75	34	20	0	5	0	6	2	4	2	0	1	15
50-70	35	15	0	2	0	3	2	1	6	1	0	13
All ages	36	67	0	11	1	19	11	9	12	1	3	55

Wales (Table F2 – self/GP referrals of women previously screened, last screen more than 5 years prev)

Part F2-1: Invitations & outcomes					Outcome of initial screen				Final outcome of assessment				
Age at 1 st offered appt	Line no.	No. of women invited	Lost to follow up after tech inad scr mammo	No. screened tech ad	Not known	Routine recall	Early recall	Referred for assmt	Failed to attend for assmt	Outcome of assmt not known	Routine recall	Early recall	Cancer
		(1)	(2)	(3)	(4)	(5)	(6)	(7)	(8)	(9)	(10)	(11)	(12)
<=44	01	0	0	0	0	0	0	0	0	0	0	0	0
45-49	02	0	0	0	0	0	0	0	0	0	0	0	0
50-52	03	0	0	0	0	0	0	0	0	0	0	0	0
53-54	04	0	0	1	0	1	0	0	0	0	0	0	0
55-59	05	0	0	46	0	46	0	0	0	0	0	0	0
60-64	06	0	0	71	0	67	0	4	0	0	2	0	2
65-69	07	0	0	52	0	50	0	2	0	0	2	0	0
70	08	0	0	17	0	15	0	2	0	0	2	0	0
71-74	09	0	0	177	0	166	0	11	0	0	7	0	4
>=75	10	0	3	417	0	379	0	38	0	0	18	0	20
50-70	11	0	0	187	0	179	0	8	0	0	6	0	2
All ages	12	0	3	781	0	724	0	57	0	0	31	0	26

Part F2-2: Assessment				Outcome of assessment up to and including cytology and diagnostic histology									
Age at 1 st offered appt	Line no.	Cancer identified without cyt/hist	Ref for cyt/core bx	Up to and including cytology/core biopsy					Up to and including open biopsy				
				Not referred for open biopsy				Ref for open bx	Total ref for open bx	No/inad result	Benign/normal		Cancer
				No/inad result	Routine recall	Early recall	Cancer				Routine recall	Early recall	
		(13)	(14)	(15)	(16)	(17)	(18)	(19)	(20)	(21)	(22)	(23)	(24)
<=44	13	0	0	0	0	0	0	0	0	0	0	0	0
45-49	14	0	0	0	0	0	0	0	0	0	0	0	0
50-52	15	0	0	0	0	0	0	0	0	0	0	0	0
53-54	16	0	0	0	0	0	0	0	0	0	0	0	0
55-59	17	0	0	0	0	0	0	0	0	0	0	0	0
60-64	18	0	3	0	1	0	2	0	0	0	0	0	0
65-69	19	0	1	0	1	0	0	0	0	0	0	0	0
70	20	0	0	0	0	0	0	0	0	0	0	0	0
71-74	21	0	5	0	1	0	4	0	0	0	0	0	0
>=75	22	0	25	0	5	0	19	1	1	0	0	0	1
50-70	23	0	4	0	2	0	2	0	0	0	0	0	0
All ages	24	0	34	0	8	0	25	1	1	0	0	0	1

Wales (Table F2 – self/GP referrals of women previously screened, last screen more than 5 years prev)

Part F2-3: Cancers		Cancers diagnosed by cytology/histology										
Age at 1 st offered appt	Line no.	Total no. with cancer	Invasive status unknown	Non-invasive or possibly micro-invasive	Micro-invasive	Invasive size						Total invasive
						<10mm	>=10mm & <15mm	>=15mm & <20mm	>=20mm & <50mm	>=50mm	Size unknown	
		(25)	(26)	(27)	(28)	(29)	(30)	(31)	(32)	(33)	(34)	(35)
<=44	25	0	0	0	0	0	0	0	0	0	0	0
45-49	26	0	0	0	0	0	0	0	0	0	0	0
50-52	27	0	0	0	0	0	0	0	0	0	0	0
53-54	28	0	0	0	0	0	0	0	0	0	0	0
55-59	29	0	0	0	0	0	0	0	0	0	0	0
60-64	30	2	0	0	0	0	1	1	0	0	0	2
65-69	31	0	0	0	0	0	0	0	0	0	0	0
70	32	0	0	0	0	0	0	0	0	0	0	0
71-74	33	4	0	0	0	1	0	2	1	0	0	4
>=75	34	20	0	4	0	3	5	2	2	0	4	16
50-70	35	2	0	0	0	0	1	1	0	0	0	2
All ages	36	26	0	4	0	4	6	5	3	0	4	22

Appendix C - 2011-12 KC62 North Wales

North Wales (Table T – all invitations and screens)

Part T1: Invitations & outcomes					Outcome of initial screen				Final outcome of assessment				
Age at 1 st offered appt	Line no.	No. of women invited	Lost to follow up after tech inad scr mammo	No. screened tech ad	Not known	Routine recall	Early recall	Referred for assmt	Failed to attend for assmt	Outcome of assmt not known	Routine recall	Early recall	Cancer
		(1)	(2)	(3)	(4)	(5)	(6)	(7)	(8)	(9)	(10)	(11)	(12)
<=44	01	0	0	0	0	0	0	0	0	0	0	0	0
45-49	02	948	2	668	0	624	0	44	0	0	40	0	4
50-52	03	5439	10	4036	0	3762	0	274	3	0	231	0	40
53-54	04	3624	1	2697	0	2608	0	89	1	1	77	0	10
55-59	05	8787	7	6612	0	6410	0	202	1	0	150	0	51
60-64	06	9991	6	7611	0	7387	0	224	3	0	156	4	61
65-69	07	8162	5	5992	0	5808	0	184	1	0	130	1	52
70	08	781	2	673	0	645	0	28	0	0	17	0	11
71-74	09	10	0	891	0	839	0	52	0	0	34	1	17
>=75	10	0	0	725	0	694	0	31	0	0	16	0	15
50-70	11	36784	31	27621	0	26620	0	1001	9	1	761	5	225
All ages	12	37742	33	29905	0	28777	0	1128	9	1	851	6	261

Part T2: Assessment			Outcome of assessment up to and including cytology and diagnostic histology										
Age at 1 st offered appt	Line no.	Cancer identified without cyt/hist	Up to and including cytology/core biopsy						Up to and including open biopsy				
			Ref for cyt/core bx	Not referred for open biopsy				Ref for open bx	Total ref for open bx	No/inad result	Benign/normal		Cancer
				No/inad result	Routine recall	Early recall	Cancer				Routine recall	Early recall	
		(13)	(14)	(15)	(16)	(17)	(18)	(19)	(20)	(21)	(22)	(23)	(24)
<=44	13	0	0	0	0	0	0	0	0	0	0	0	0
45-49	14	0	18	0	13	0	4	1	1	0	1	0	0
50-52	15	0	111	0	68	0	37	6	6	0	3	0	3
53-54	16	0	28	0	17	0	10	1	1	0	1	0	0
55-59	17	0	79	0	27	0	51	1	1	0	1	0	0
60-64	18	0	95	0	31	0	60	4	4	0	1	2	1
65-69	19	0	79	0	25	0	51	3	3	0	2	0	1
70	20	0	16	0	5	0	11	0	0	0	0	0	0
71-74	21	0	23	0	5	0	17	1	1	0	1	0	0
>=75	22	0	22	0	7	0	15	0	0	0	0	0	0
50-70	23	0	408	0	173	0	220	15	15	0	8	2	5
All ages	24	0	471	0	198	0	256	17	17	0	10	2	5

North Wales (Table T – all invitations and screens)

Part T3: Cancers		Cancers diagnosed by cytology/histology										
Age at 1 st offered appt	Line no.	Total no. with cancer	Invasive status unknown	Non-invasive or possibly micro-invasive	Micro-invasive	Invasive size						Total invasive
						<10mm	>=10mm & <15mm	>=15mm & <20mm	>=20mm & <50mm	>=50mm	Size unknown	
		(25)	(26)	(27)	(28)	(29)	(30)	(31)	(32)	(33)	(34)	(35)
<=44	25	0	0	0	0	0	0	0	0	0	0	0
45-49	26	4	0	1	1	1	1	0	0	0	0	2
50-52	27	40	0	7	0	9	5	8	9	1	1	33
53-54	28	10	0	4	0	2	2	0	1	0	1	6
55-59	29	51	0	11	0	8	17	4	11	0	0	40
60-64	30	61	0	11	1	13	16	9	8	1	2	49
65-69	31	52	0	4	0	11	17	9	10	0	1	48
70	32	11	0	1	0	3	1	4	2	0	0	10
71-74	33	17	0	2	1	5	4	4	1	0	0	14
>=75	34	15	0	2	0	5	3	3	1	0	1	13
50-70	35	225	0	38	1	46	58	34	41	2	5	186
All ages	36	261	0	43	3	57	66	41	43	2	6	215

North Wales (Table A – first invitation for routine screening)

Part A1: Invitations & outcomes					Outcome of initial screen				Final outcome of assessment				
Age at 1 st offered appt	Line no.	No. of women invited	Lost to follow up after tech inad scr mammo	No. screened tech ad	Not known	Routine recall	Early recall	Referred for assmt	Failed to attend for assmt	Outcome of assmt not known	Routine recall	Early recall	Cancer
		(1)	(2)	(3)	(4)	(5)	(6)	(7)	(8)	(9)	(10)	(11)	(12)
<=44	01	0	0	0	0	0	0	0	0	0	0	0	0
45-49	02	944	2	661	0	617	0	44	0	0	40	0	4
50-52	03	4391	9	3147	0	2920	0	227	3	0	193	0	31
53-54	04	102	0	34	0	32	0	2	0	0	1	0	1
55-59	05	98	0	16	0	15	0	1	0	0	1	0	0
60-64	06	63	0	6	0	3	0	3	0	0	3	0	0
65-69	07	42	0	7	0	7	0	0	0	0	0	0	0
70	08	3	0	0	0	0	0	0	0	0	0	0	0
71-74	09	0	0	0	0	0	0	0	0	0	0	0	0
>=75	10	0	0	0	0	0	0	0	0	0	0	0	0
50-70	11	4699	9	3210	0	2977	0	233	3	0	198	0	32
All ages	12	5643	11	3871	0	3594	0	277	3	0	238	0	36

Part A2: Assessment			Outcome of assessment up to and including cytology and diagnostic histology										
Age at 1 st offered appt	Line no.	Cancer identified without cyt/hist	Up to and including cytology/core biopsy						Up to and including open biopsy				
			Ref for cyt/core bx	Not referred for open biopsy				Ref for open bx	Total ref for open bx	No/inad result	Benign/normal		Cancer
				No/inad result	Routine recall	Early recall	Cancer				Routine recall	Early recall	
		(13)	(14)	(15)	(16)	(17)	(18)	(19)	(20)	(21)	(22)	(23)	(24)
<=44	13	0	0	0	0	0	0	0	0	0	0	0	0
45-49	14	0	18	0	13	0	4	1	1	0	1	0	0
50-52	15	0	91	0	58	0	28	5	5	0	2	0	3
53-54	16	0	1	0	0	0	1	0	0	0	0	0	0
55-59	17	0	0	0	0	0	0	0	0	0	0	0	0
60-64	18	0	3	0	3	0	0	0	0	0	0	0	0
65-69	19	0	0	0	0	0	0	0	0	0	0	0	0
70	20	0	0	0	0	0	0	0	0	0	0	0	0
71-74	21	0	0	0	0	0	0	0	0	0	0	0	0
>=75	22	0	0	0	0	0	0	0	0	0	0	0	0
50-70	23	0	95	0	61	0	29	5	5	0	2	0	3
All ages	24	0	113	0	74	0	33	6	6	0	3	0	3

North Wales (Table A – first invitation for routine screening)

Part A3: Cancers		Cancers diagnosed by cytology/histology										
Age at 1 st offered appt	Line no.	Total no. with cancer	Invasive status unknown	Non-invasive or possibly micro-invasive	Micro-invasive	Invasive size						Total invasive
						<10mm	>=10mm & <15mm	>=15mm & <20mm	>=20mm & <50mm	>=50mm	Size unknown	
		(25)	(26)	(27)	(28)	(29)	(30)	(31)	(32)	(33)	(34)	(35)
<=44	25	0	0	0	0	0	0	0	0	0	0	0
45-49	26	4	0	1	1	1	1	0	0	0	0	2
50-52	27	31	0	7	0	9	3	5	5	1	1	24
53-54	28	1	0	1	0	0	0	0	0	0	0	0
55-59	29	0	0	0	0	0	0	0	0	0	0	0
60-64	30	0	0	0	0	0	0	0	0	0	0	0
65-69	31	0	0	0	0	0	0	0	0	0	0	0
70	32	0	0	0	0	0	0	0	0	0	0	0
71-74	33	0	0	0	0	0	0	0	0	0	0	0
>=75	34	0	0	0	0	0	0	0	0	0	0	0
50-70	35	32	0	8	0	9	3	5	5	1	1	24
All ages	36	36	0	9	1	10	4	5	5	1	1	26

North Wales (Table B – routine invitation to previous non-attenders)

Part B1: Invitations & outcomes					Outcome of initial screen				Final outcome of assessment				
Age at 1 st offered appt	Line no.	No. of women invited	Lost to follow up after tech inad scr mammo	No. screened tech ad	Not known	Routine recall	Early recall	Referred for assmt	Failed to attend for assmt	Outcome of assmt not known	Routine recall	Early recall	Cancer
		(1)	(2)	(3)	(4)	(5)	(6)	(7)	(8)	(9)	(10)	(11)	(12)
<=44	01	0	0	0	0	0	0	0	0	0	0	0	0
45-49	02	0	0	0	0	0	0	0	0	0	0	0	0
50-52	03	254	1	102	0	94	0	8	0	0	7	0	1
53-54	04	768	0	236	0	210	0	26	1	0	22	0	3
55-59	05	1283	3	182	0	169	0	13	0	0	9	0	4
60-64	06	996	0	73	0	68	0	5	0	0	5	0	0
65-69	07	666	0	31	0	30	0	1	0	0	1	0	0
70	08	47	0	2	0	2	0	0	0	0	0	0	0
71-74	09	0	0	0	0	0	0	0	0	0	0	0	0
>=75	10	0	0	0	0	0	0	0	0	0	0	0	0
50-70	11	4014	4	626	0	573	0	53	1	0	44	0	8
All ages	12	4014	4	626	0	573	0	53	1	0	44	0	8

Part B2: Assessment			Outcome of assessment up to and including cytology and diagnostic histology										
Age at 1 st offered appt	Line no.	Cancer identified without cyt/hist	Up to and including cytology/core biopsy						Up to and including open biopsy				
			Ref for cyt/core bx	Not referred for open biopsy				Ref for open bx	Total ref for open bx	No/inad result	Benign/normal		Cancer
				No/inad result	Routine recall	Early recall	Cancer				Routine recall	Early recall	
		(13)	(14)	(15)	(16)	(17)	(18)	(19)	(20)	(21)	(22)	(23)	(24)
<=44	13	0	0	0	0	0	0	0	0	0	0	0	0
45-49	14	0	0	0	0	0	0	0	0	0	0	0	0
50-52	15	0	5	0	4	0	1	0	0	0	0	0	0
53-54	16	0	11	0	7	0	3	1	1	0	1	0	0
55-59	17	0	6	0	2	0	4	0	0	0	0	0	0
60-64	18	0	1	0	1	0	0	0	0	0	0	0	0
65-69	19	0	0	0	0	0	0	0	0	0	0	0	0
70	20	0	0	0	0	0	0	0	0	0	0	0	0
71-74	21	0	0	0	0	0	0	0	0	0	0	0	0
>=75	22	0	0	0	0	0	0	0	0	0	0	0	0
50-70	23	0	23	0	14	0	8	1	1	0	1	0	0
All ages	24	0	23	0	14	0	8	1	1	0	1	0	0

North Wales (Table B – routine invitation to previous non-attenders)

Part B3: Cancers		Cancers diagnosed by cytology/histology										
Age at 1 st offered appt	Line no.	Total no. with cancer	Invasive status unknown	Non-invasive or possibly micro-invasive	Micro-invasive	Invasive size						Total invasive
						<10mm	>=10mm & <15mm	>=15mm & <20mm	>=20mm & <50mm	>=50mm	Size unknown	
		(25)	(26)	(27)	(28)	(29)	(30)	(31)	(32)	(33)	(34)	(35)
<=44	25	0	0	0	0	0	0	0	0	0	0	0
45-49	26	0	0	0	0	0	0	0	0	0	0	0
50-52	27	1	0	0	0	0	0	0	1	0	0	1
53-54	28	3	0	0	0	0	1	0	1	0	1	3
55-59	29	4	0	1	0	1	0	1	1	0	0	3
60-64	30	0	0	0	0	0	0	0	0	0	0	0
65-69	31	0	0	0	0	0	0	0	0	0	0	0
70	32	0	0	0	0	0	0	0	0	0	0	0
71-74	33	0	0	0	0	0	0	0	0	0	0	0
>=75	34	0	0	0	0	0	0	0	0	0	0	0
50-70	35	8	0	1	0	1	1	1	3	0	1	7
All ages	36	8	0	1	0	1	1	1	3	0	1	7

North Wales (Table C1 – routine invitation to previous attenders, last screen within 5 years)

Part C1-1: Invitations & outcomes					Outcome of initial screen				Final outcome of assessment				
Age at 1 st offered appt	Line no.	No. of women invited	Lost to follow up after tech inad scr mammo	No. screened tech ad	Not known	Routine recall	Early recall	Referred for assmt	Failed to attend for assmt	Outcome of assmt not known	Routine recall	Early recall	Cancer
		(1)	(2)	(3)	(4)	(5)	(6)	(7)	(8)	(9)	(10)	(11)	(12)
<=44	01	0	0	0	0	0	0	0	0	0	0	0	0
45-49	02	1	0	1	0	1	0	0	0	0	0	0	0
50-52	03	769	0	690	0	660	0	30	0	0	23	0	7
53-54	04	2698	1	2338	0	2281	0	57	0	0	51	0	6
55-59	05	6581	3	5880	0	5727	0	153	1	0	112	0	40
60-64	06	7659	6	6942	0	6748	0	194	3	0	136	2	53
65-69	07	6201	2	5500	0	5340	0	160	1	0	112	0	47
70	08	618	1	543	0	523	0	20	0	0	12	0	8
71-74	09	7	0	5	0	5	0	0	0	0	0	0	0
>=75	10	0	0	0	0	0	0	0	0	0	0	0	0
50-70	11	24526	13	21893	0	21279	0	614	5	0	446	2	161
All ages	12	24534	13	21899	0	21285	0	614	5	0	446	2	161

Part C1-2: Assessment				Outcome of assessment up to and including cytology and diagnostic histology									
Age at 1 st offered appt	Line no.	Cancer identified without cyt/hist	Ref for cyt/core bx	Up to and including cytology/core biopsy					Up to and including open biopsy				
				No/inad result	Not referred for open biopsy			Ref for open bx	Total ref for open bx	No/inad result	Benign/normal		Cancer
					Routine recall	Early recall	Cancer				Routine recall	Early recall	
		(13)	(14)	(15)	(16)	(17)	(18)	(19)	(20)	(21)	(22)	(23)	(24)
<=44	13	0	0	0	0	0	0	0	0	0	0	0	0
45-49	14	0	0	0	0	0	0	0	0	0	0	0	0
50-52	15	0	11	0	3	0	7	1	1	0	1	0	0
53-54	16	0	15	0	9	0	6	0	0	0	0	0	0
55-59	17	0	57	0	16	0	40	1	1	0	1	0	0
60-64	18	0	78	0	22	0	52	4	4	0	1	2	1
65-69	19	0	70	0	21	0	46	3	3	0	2	0	1
70	20	0	10	0	2	0	8	0	0	0	0	0	0
71-74	21	0	0	0	0	0	0	0	0	0	0	0	0
>=75	22	0	0	0	0	0	0	0	0	0	0	0	0
50-70	23	0	241	0	73	0	159	9	9	0	5	2	2
All ages	24	0	241	0	73	0	159	9	9	0	5	2	2

North Wales (Table C1 – routine invitation to previous attenders, last screen within 5 years)

Part C1-3: Cancers		Cancers diagnosed by cytology/histology										
Age at 1 st offered appt	Line no.	Total no. with cancer	Invasive status unknown	Non-invasive or possibly micro-invasive	Micro-invasive	Invasive size						Total invasive
						<10mm	>=10mm & <15mm	>=15mm & <20mm	>=20mm & <50mm	>=50mm	Size unknown	
		(25)	(26)	(27)	(28)	(29)	(30)	(31)	(32)	(33)	(34)	(35)
<=44	25	0	0	0	0	0	0	0	0	0	0	0
45-49	26	0	0	0	0	0	0	0	0	0	0	0
50-52	27	7	0	0	0	0	1	3	3	0	0	7
53-54	28	6	0	3	0	2	1	0	0	0	0	3
55-59	29	40	0	8	0	7	15	1	9	0	0	32
60-64	30	53	0	11	1	12	15	6	7	0	1	41
65-69	31	47	0	4	0	11	13	9	9	0	1	43
70	32	8	0	1	0	2	1	3	1	0	0	7
71-74	33	0	0	0	0	0	0	0	0	0	0	0
>=75	34	0	0	0	0	0	0	0	0	0	0	0
50-70	35	161	0	27	1	34	46	22	29	0	2	133
All ages	36	161	0	27	1	34	46	22	29	0	2	133

North Wales (Table C2 – routine invitation to previous attenders, last screen more than 5 years prev)

Part C2-1: Invitations & outcomes					Outcome of initial screen				Final outcome of assessment				
Age at 1 st offered appt	Line no.	No. of women invited	Lost to follow up after tech inad scr mammo	No. screened tech ad	Not known	Routine recall	Early recall	Referred for assmt	Failed to attend for assmt	Outcome of assmt not known	Routine recall	Early recall	Cancer
		(1)	(2)	(3)	(4)	(5)	(6)	(7)	(8)	(9)	(10)	(11)	(12)
<=44	01	0	0	0	0	0	0	0	0	0	0	0	0
45-49	02	3	0	3	0	3	0	0	0	0	0	0	0
50-52	03	24	0	8	0	6	0	2	0	0	1	0	1
53-54	04	55	0	23	0	21	0	2	0	0	2	0	0
55-59	05	825	1	408	0	380	0	28	0	0	22	0	6
60-64	06	1271	0	459	0	445	0	14	0	0	9	0	5
65-69	07	1252	3	370	0	351	0	19	0	0	14	0	5
70	08	113	0	27	0	26	0	1	0	0	1	0	0
71-74	09	3	0	0	0	0	0	0	0	0	0	0	0
>=75	10	0	0	0	0	0	0	0	0	0	0	0	0
50-70	11	3540	4	1295	0	1229	0	66	0	0	49	0	17
All ages	12	3546	4	1298	0	1232	0	66	0	0	49	0	17

Part C2-2: Assessment			Outcome of assessment up to and including cytology and diagnostic histology										
Age at 1 st offered appt	Line no.	Cancer identified without cyt/hist	Up to and including cytology/core biopsy						Up to and including open biopsy				
			Ref for cyt/core bx	Not referred for open biopsy				Ref for open bx	Total ref for open bx	No/inad result	Benign/normal		Cancer
				No/inad result	Routine recall	Early recall	Cancer				Routine recall	Early recall	
		(13)	(14)	(15)	(16)	(17)	(18)	(19)	(20)	(21)	(22)	(23)	(24)
<=44	13	0	0	0	0	0	0	0	0	0	0	0	0
45-49	14	0	0	0	0	0	0	0	0	0	0	0	0
50-52	15	0	2	0	1	0	1	0	0	0	0	0	0
53-54	16	0	1	0	1	0	0	0	0	0	0	0	0
55-59	17	0	14	0	8	0	6	0	0	0	0	0	0
60-64	18	0	9	0	4	0	5	0	0	0	0	0	0
65-69	19	0	8	0	3	0	5	0	0	0	0	0	0
70	20	0	0	0	0	0	0	0	0	0	0	0	0
71-74	21	0	0	0	0	0	0	0	0	0	0	0	0
>=75	22	0	0	0	0	0	0	0	0	0	0	0	0
50-70	23	0	34	0	17	0	17	0	0	0	0	0	0
All ages	24	0	34	0	17	0	17	0	0	0	0	0	0

North Wales (Table C2 – routine invitation to previous attenders, last screen more than 5 years prev)

Part C2-3: Cancers		Cancers diagnosed by cytology/histology										
Age at 1 st offered appt	Line no.	Total no. with cancer	Invasive status unknown	Non-invasive or possibly micro-invasive	Micro-invasive	Invasive size						Total invasive
						<10mm	>=10mm & <15mm	>=15mm & <20mm	>=20mm & <50mm	>=50mm	Size unknown	
		(25)	(26)	(27)	(28)	(29)	(30)	(31)	(32)	(33)	(34)	(35)
<=44	25	0	0	0	0	0	0	0	0	0	0	0
45-49	26	0	0	0	0	0	0	0	0	0	0	0
50-52	27	1	0	0	0	0	1	0	0	0	0	1
53-54	28	0	0	0	0	0	0	0	0	0	0	0
55-59	29	6	0	2	0	0	1	2	1	0	0	4
60-64	30	5	0	0	0	1	1	2	0	0	1	5
65-69	31	5	0	0	0	0	4	0	1	0	0	5
70	32	0	0	0	0	0	0	0	0	0	0	0
71-74	33	0	0	0	0	0	0	0	0	0	0	0
>=75	34	0	0	0	0	0	0	0	0	0	0	0
50-70	35	17	0	2	0	1	7	4	2	0	1	15
All ages	36	17	0	2	0	1	7	4	2	0	1	15

North Wales (Table D – early recall)

Part D1: Invitations & outcomes					Outcome of initial screen				Final outcome of assessment				
Age at 1 st offered appt	Line no.	No. of women invited	Lost to follow up after tech inad scr mammo	No. screened tech ad	Not known	Routine recall	Early recall	Referred for assmt	Failed to attend for assmt	Outcome of assmt not known	Routine recall	Early recall	Cancer
		(1)	(2)	(3)	(4)	(5)	(6)	(7)	(8)	(9)	(10)	(11)	(12)
<=44	01	0	0	0	0	0	0	0	0	0	0	0	0
45-49	02	0	0	0	0	0	0	0	0	0	0	0	0
50-52	03	1	0	1	0	0	0	1	0	0	1	0	0
53-54	04	1	0	1	0	0	0	1	0	1	0	0	0
55-59	05	0	0	0	0	0	0	0	0	0	0	0	0
60-64	06	2	0	2	0	0	0	2	0	0	0	2	0
65-69	07	1	0	1	0	0	0	1	0	0	0	1	0
70	08	0	0	0	0	0	0	0	0	0	0	0	0
71-74	09	0	0	0	0	0	0	0	0	0	0	0	0
>=75	10	0	0	0	0	0	0	0	0	0	0	0	0
50-70	11	5	0	5	0	0	0	5	0	1	1	3	0
All ages	12	5	0	5	0	0	0	5	0	1	1	3	0

Part D2: Assessment			Outcome of assessment up to and including cytology and diagnostic histology										
Age at 1 st offered appt	Line no.	Cancer identified without cyt/hist	Up to and including cytology/core biopsy						Up to and including open biopsy				
			Ref for cyt/core bx	Not referred for open biopsy				Ref for open bx	Total ref for open bx	No/inad result	Benign/normal		Cancer
				No/inad result	Routine recall	Early recall	Cancer				Routine recall	Early recall	
		(13)	(14)	(15)	(16)	(17)	(18)	(19)	(20)	(21)	(22)	(23)	(24)
<=44	13	0	0	0	0	0	0	0	0	0	0	0	0
45-49	14	0	0	0	0	0	0	0	0	0	0	0	0
50-52	15	0	0	0	0	0	0	0	0	0	0	0	0
53-54	16	0	0	0	0	0	0	0	0	0	0	0	0
55-59	17	0	0	0	0	0	0	0	0	0	0	0	0
60-64	18	0	0	0	0	0	0	0	0	0	0	0	0
65-69	19	0	0	0	0	0	0	0	0	0	0	0	0
70	20	0	0	0	0	0	0	0	0	0	0	0	0
71-74	21	0	0	0	0	0	0	0	0	0	0	0	0
>=75	22	0	0	0	0	0	0	0	0	0	0	0	0
50-70	23	0	0	0	0	0	0	0	0	0	0	0	0
All ages	24	0	0	0	0	0	0	0	0	0	0	0	0

North Wales (Table D – early recall)

Part D3: Cancers		Cancers diagnosed by cytology/histology										
Age at 1 st offered appt	Line no.	Total no. with cancer	Invasive status unknown	Non-invasive or possibly micro-invasive	Micro-invasive	Invasive size						Total invasive
						<10mm	>=10mm & <15mm	>=15mm & <20mm	>=20mm & <50mm	>=50mm	Size unknown	
		(25)	(26)	(27)	(28)	(29)	(30)	(31)	(32)	(33)	(34)	(35)
<=44	25	0	0	0	0	0	0	0	0	0	0	0
45-49	26	0	0	0	0	0	0	0	0	0	0	0
50-52	27	0	0	0	0	0	0	0	0	0	0	0
53-54	28	0	0	0	0	0	0	0	0	0	0	0
55-59	29	0	0	0	0	0	0	0	0	0	0	0
60-64	30	0	0	0	0	0	0	0	0	0	0	0
65-69	31	0	0	0	0	0	0	0	0	0	0	0
70	32	0	0	0	0	0	0	0	0	0	0	0
71-74	33	0	0	0	0	0	0	0	0	0	0	0
>=75	34	0	0	0	0	0	0	0	0	0	0	0
50-70	35	0	0	0	0	0	0	0	0	0	0	0
All ages	36	0	0	0	0	0	0	0	0	0	0	0

North Wales (Table E – self/GP referral of women not previously screened)

Part E1: Invitations & outcomes					Outcome of initial screen				Final outcome of assessment				
Age at 1 st offered appt	Line no.	No. of women invited	Lost to follow up after tech inad scr mammo	No. screened tech ad	Not known	Routine recall	Early recall	Referred for assmt	Failed to attend for assmt	Outcome of assmt not known	Routine recall	Early recall	Cancer
		(1)	(2)	(3)	(4)	(5)	(6)	(7)	(8)	(9)	(10)	(11)	(12)
<=44	01	0	0	0	0	0	0	0	0	0	0	0	0
45-49	02	0	0	3	0	3	0	0	0	0	0	0	0
50-52	03	0	0	76	0	70	0	6	0	0	6	0	0
53-54	04	0	0	25	0	24	0	1	0	0	1	0	0
55-59	05	0	0	28	0	27	0	1	0	0	1	0	0
60-64	06	0	0	26	0	24	0	2	0	0	1	0	1
65-69	07	0	0	13	0	13	0	0	0	0	0	0	0
70	08	0	0	3	0	3	0	0	0	0	0	0	0
71-74	09	0	0	7	0	6	0	1	0	0	1	0	0
>=75	10	0	0	23	0	22	0	1	0	0	0	0	1
50-70	11	0	0	171	0	161	0	10	0	0	9	0	1
All ages	12	0	0	204	0	192	0	12	0	0	10	0	2

Part E2: Assessment				Outcome of assessment up to and including cytology and diagnostic histology									
Age at 1 st offered appt	Line no.	Cancer identified without cyt/hist	Ref for cyt/core bx	Up to and including cytology/core biopsy					Up to and including open biopsy				
				No/inad result	Not referred for open biopsy			Ref for open bx	Total ref for open bx	No/inad result	Benign/normal		Cancer
					Routine recall	Early recall	Cancer				Routine recall	Early recall	
		(13)	(14)	(15)	(16)	(17)	(18)	(19)	(20)	(21)	(22)	(23)	(24)
<=44	13	0	0	0	0	0	0	0	0	0	0	0	0
45-49	14	0	0	0	0	0	0	0	0	0	0	0	0
50-52	15	0	2	0	2	0	0	0	0	0	0	0	0
53-54	16	0	0	0	0	0	0	0	0	0	0	0	0
55-59	17	0	0	0	0	0	0	0	0	0	0	0	0
60-64	18	0	2	0	1	0	1	0	0	0	0	0	0
65-69	19	0	0	0	0	0	0	0	0	0	0	0	0
70	20	0	0	0	0	0	0	0	0	0	0	0	0
71-74	21	0	0	0	0	0	0	0	0	0	0	0	0
>=75	22	0	1	0	0	0	1	0	0	0	0	0	0
50-70	23	0	4	0	3	0	1	0	0	0	0	0	0
All ages	24	0	5	0	3	0	2	0	0	0	0	0	0

North Wales (Table E – self/GP referral of women not previously screened)

Part E3: Cancers		Cancers diagnosed by cytology/histology										
Age at 1 st offered appt	Line no.	Total no. with cancer	Invasive status unknown	Non-invasive or possibly micro-invasive	Micro-invasive	Invasive size						Total invasive
						<10mm	>=10mm & <15mm	>=15mm & <20mm	>=20mm & <50mm	>=50mm	Size unknown	
		(25)	(26)	(27)	(28)	(29)	(30)	(31)	(32)	(33)	(34)	(35)
<=44	25	0	0	0	0	0	0	0	0	0	0	0
45-49	26	0	0	0	0	0	0	0	0	0	0	0
50-52	27	0	0	0	0	0	0	0	0	0	0	0
53-54	28	0	0	0	0	0	0	0	0	0	0	0
55-59	29	0	0	0	0	0	0	0	0	0	0	0
60-64	30	1	0	0	0	0	0	0	1	0	0	1
65-69	31	0	0	0	0	0	0	0	0	0	0	0
70	32	0	0	0	0	0	0	0	0	0	0	0
71-74	33	0	0	0	0	0	0	0	0	0	0	0
>=75	34	1	0	0	0	1	0	0	0	0	0	1
50-70	35	1	0	0	0	0	0	0	1	0	0	1
All ages	36	2	0	0	0	1	0	0	1	0	0	2

North Wales (Table F1 – self/GP referrals of women previously screened, last screen within 5 years)

Part F1-1: Invitations & outcomes					Outcome of initial screen				Final outcome of assessment				
Age at 1 st offered appt	Line no.	No. of women invited	Lost to follow up after tech inad scr mammo	No. screened tech ad	Not known	Routine recall	Early recall	Referred for assmt	Failed to attend for assmt	Outcome of assmt not known	Routine recall	Early recall	Cancer
		(1)	(2)	(3)	(4)	(5)	(6)	(7)	(8)	(9)	(10)	(11)	(12)
<=44	01	0	0	0	0	0	0	0	0	0	0	0	0
45-49	02	0	0	0	0	0	0	0	0	0	0	0	0
50-52	03	0	0	12	0	12	0	0	0	0	0	0	0
53-54	04	0	0	40	0	40	0	0	0	0	0	0	0
55-59	05	0	0	78	0	72	0	6	0	0	5	0	1
60-64	06	0	0	79	0	77	0	2	0	0	1	0	1
65-69	07	0	0	53	0	51	0	2	0	0	2	0	0
70	08	0	1	93	0	86	0	7	0	0	4	0	3
71-74	09	0	0	809	0	762	0	47	0	0	31	1	15
>=75	10	0	0	578	0	555	0	23	0	0	12	0	11
50-70	11	0	1	355	0	338	0	17	0	0	12	0	5
All ages	12	0	1	1742	0	1655	0	87	0	0	55	1	31

Part F1-2: Assessment				Outcome of assessment up to and including cytology and diagnostic histology									
Age at 1 st offered appt	Line no.	Cancer identified without cyt/hist	Ref for cyt/core bx	Up to and including cytology/core biopsy					Up to and including open biopsy				
				Not referred for open biopsy				Ref for open bx	Total ref for open bx	No/inad result	Benign/normal		Cancer
				No/inad result	Routine recall	Early recall	Cancer				Routine recall	Early recall	
		(13)	(14)	(15)	(16)	(17)	(18)	(19)	(20)	(21)	(22)	(23)	(24)
<=44	13	0	0	0	0	0	0	0	0	0	0	0	0
45-49	14	0	0	0	0	0	0	0	0	0	0	0	0
50-52	15	0	0	0	0	0	0	0	0	0	0	0	0
53-54	16	0	0	0	0	0	0	0	0	0	0	0	0
55-59	17	0	2	0	1	0	1	0	0	0	0	0	0
60-64	18	0	1	0	0	0	1	0	0	0	0	0	0
65-69	19	0	0	0	0	0	0	0	0	0	0	0	0
70	20	0	6	0	3	0	3	0	0	0	0	0	0
71-74	21	0	20	0	4	0	15	1	1	0	1	0	0
>=75	22	0	16	0	5	0	11	0	0	0	0	0	0
50-70	23	0	9	0	4	0	5	0	0	0	0	0	0
All ages	24	0	45	0	13	0	31	1	1	0	1	0	0

North Wales (Table F1 – self/GP referrals of women previously screened, last screen within 5 years)

Part F1-3: Cancers		Cancers diagnosed by cytology/histology										
Age at 1 st offered appt	Line no.	Total no. with cancer	Invasive status unknown	Non-invasive or possibly micro-invasive	Micro-invasive	Invasive size						Total invasive
						<10mm	>=10mm & <15mm	>=15mm & <20mm	>=20mm & <50mm	>=50mm	Size unknown	
		(25)	(26)	(27)	(28)	(29)	(30)	(31)	(32)	(33)	(34)	(35)
<=44	25	0	0	0	0	0	0	0	0	0	0	0
45-49	26	0	0	0	0	0	0	0	0	0	0	0
50-52	27	0	0	0	0	0	0	0	0	0	0	0
53-54	28	0	0	0	0	0	0	0	0	0	0	0
55-59	29	1	0	0	0	0	1	0	0	0	0	1
60-64	30	1	0	0	0	0	0	0	0	1	0	1
65-69	31	0	0	0	0	0	0	0	0	0	0	0
70	32	3	0	0	0	1	0	1	1	0	0	3
71-74	33	15	0	2	1	4	4	3	1	0	0	12
>=75	34	11	0	2	0	4	1	3	0	0	1	9
50-70	35	5	0	0	0	1	1	1	1	1	0	5
All ages	36	31	0	4	1	9	6	7	2	1	1	26

North Wales (Table F2 – self/GP referrals of women previously screened, last screen more than 5 years prev)

Part F2-1: Invitations & outcomes					Outcome of initial screen				Final outcome of assessment				
Age at 1 st offered appt	Line no.	No. of women invited	Lost to follow up after tech inad scr mammo	No. screened tech ad	Not known	Routine recall	Early recall	Referred for assmt	Failed to attend for assmt	Outcome of assmt not known	Routine recall	Early recall	Cancer
		(1)	(2)	(3)	(4)	(5)	(6)	(7)	(8)	(9)	(10)	(11)	(12)
<=44	01	0	0	0	0	0	0	0	0	0	0	0	0
45-49	02	0	0	0	0	0	0	0	0	0	0	0	0
50-52	03	0	0	0	0	0	0	0	0	0	0	0	0
53-54	04	0	0	0	0	0	0	0	0	0	0	0	0
55-59	05	0	0	20	0	20	0	0	0	0	0	0	0
60-64	06	0	0	24	0	22	0	2	0	0	1	0	1
65-69	07	0	0	17	0	16	0	1	0	0	1	0	0
70	08	0	0	5	0	5	0	0	0	0	0	0	0
71-74	09	0	0	70	0	66	0	4	0	0	2	0	2
>=75	10	0	0	124	0	117	0	7	0	0	4	0	3
50-70	11	0	0	66	0	63	0	3	0	0	2	0	1
All ages	12	0	0	260	0	246	0	14	0	0	8	0	6

Part F2-2: Assessment			Outcome of assessment up to and including cytology and diagnostic histology										
Age at 1 st offered appt	Line no.	Cancer identified without cyt/hist	Up to and including cytology/core biopsy						Up to and including open biopsy				
			Ref for cyt/core bx	Not referred for open biopsy				Ref for open bx	Total ref for open bx	No/inad result	Benign/normal		Cancer
				No/inad result	Routine recall	Early recall	Cancer				Routine recall	Early recall	
		(13)	(14)	(15)	(16)	(17)	(18)	(19)	(20)	(21)	(22)	(23)	(24)
<=44	13	0	0	0	0	0	0	0	0	0	0	0	0
45-49	14	0	0	0	0	0	0	0	0	0	0	0	0
50-52	15	0	0	0	0	0	0	0	0	0	0	0	0
53-54	16	0	0	0	0	0	0	0	0	0	0	0	0
55-59	17	0	0	0	0	0	0	0	0	0	0	0	0
60-64	18	0	1	0	0	0	1	0	0	0	0	0	0
65-69	19	0	1	0	1	0	0	0	0	0	0	0	0
70	20	0	0	0	0	0	0	0	0	0	0	0	0
71-74	21	0	3	0	1	0	2	0	0	0	0	0	0
>=75	22	0	5	0	2	0	3	0	0	0	0	0	0
50-70	23	0	2	0	1	0	1	0	0	0	0	0	0
All ages	24	0	10	0	4	0	6	0	0	0	0	0	0

North Wales (Table F2 – self/GP referrals of women previously screened, last screen more than 5 years prev)

Part F2-3: Cancers		Cancers diagnosed by cytology/histology										
Age at 1 st offered appt	Line no.	Total no. with cancer	Invasive status unknown	Non-invasive or possibly micro-invasive	Micro-invasive	Invasive size					Size unknown	Total invasive
						<10mm	>=10mm & <15mm	>=15mm & <20mm	>=20mm & <50mm	>=50mm		
		(25)	(26)	(27)	(28)	(29)	(30)	(31)	(32)	(33)	(34)	(35)
<=44	25	0	0	0	0	0	0	0	0	0	0	0
45-49	26	0	0	0	0	0	0	0	0	0	0	0
50-52	27	0	0	0	0	0	0	0	0	0	0	0
53-54	28	0	0	0	0	0	0	0	0	0	0	0
55-59	29	0	0	0	0	0	0	0	0	0	0	0
60-64	30	1	0	0	0	0	0	1	0	0	0	1
65-69	31	0	0	0	0	0	0	0	0	0	0	0
70	32	0	0	0	0	0	0	0	0	0	0	0
71-74	33	2	0	0	0	1	0	1	0	0	0	2
>=75	34	3	0	0	0	0	2	0	1	0	0	3
50-70	35	1	0	0	0	0	0	1	0	0	0	1
All ages	36	6	0	0	0	1	2	2	1	0	0	6

Appendix D - 2011-12 KC62 South East Wales

South East Wales (Table T – all invitations and screens)

Part T1: Invitations & outcomes					Outcome of initial screen				Final outcome of assessment				
Age at 1 st offered appt	Line no.	No. of women invited	Lost to follow up after tech inad scr mammo	No. screened tech ad	Not known	Routine recall	Early recall	Referred for assmt	Failed to attend for assmt	Outcome of assmt not known	Routine recall	Early recall	Cancer
		(1)	(2)	(3)	(4)	(5)	(6)	(7)	(8)	(9)	(10)	(11)	(12)
<=44	01	0	0	0	0	0	0	0	0	0	0	0	0
45-49	02	1366	4	959	0	878	0	81	0	0	76	2	3
50-52	03	7475	7	5478	0	4932	0	546	4	0	489	4	49
53-54	04	4911	5	3648	0	3424	0	224	3	1	186	8	26
55-59	05	11447	10	8425	0	8010	0	415	3	2	348	3	59
60-64	06	11711	6	8766	0	8348	0	418	4	0	316	10	88
65-69	07	9495	11	6890	0	6543	0	347	1	0	265	6	75
70	08	858	1	727	0	691	0	36	0	0	27	0	9
71-74	09	26	0	900	0	844	0	56	0	0	42	0	14
>=75	10	1	3	717	0	668	0	49	0	0	29	1	19
50-70	11	45897	40	33934	0	31948	0	1986	15	3	1631	31	306
All ages	12	47290	47	36510	0	34338	0	2172	15	3	1778	34	342

Part T2: Assessment			Outcome of assessment up to and including cytology and diagnostic histology										
Age at 1 st offered appt	Line no.	Cancer identified without cyt/hist	Up to and including cytology/core biopsy						Up to and including open biopsy				
			Ref for cyt/core bx	Not referred for open biopsy				Ref for open bx	Total ref for open bx	No/inad result	Benign/normal		Cancer
				No/inad result	Routine recall	Early recall	Cancer				Routine recall	Early recall	
		(13)	(14)	(15)	(16)	(17)	(18)	(19)	(20)	(21)	(22)	(23)	(24)
<=44	13	0	0	0	0	0	0	0	0	0	0	0	0
45-49	14	0	29	0	20	0	3	6	6	0	6	0	0
50-52	15	0	160	0	96	2	44	18	18	0	13	0	5
53-54	16	0	73	0	36	2	26	9	9	0	8	0	0
55-59	17	0	112	0	45	1	55	11	11	0	6	0	4
60-64	18	0	146	0	52	4	85	5	5	0	2	0	3
65-69	19	0	131	0	52	2	72	5	5	0	2	0	3
70	20	0	12	0	3	0	9	0	0	0	0	0	0
71-74	21	0	23	0	8	0	14	1	1	0	1	0	0
>=75	22	0	24	0	4	0	18	2	2	0	1	0	1
50-70	23	0	634	0	284	11	291	48	48	0	31	0	15
All ages	24	0	710	0	316	11	326	57	57	0	39	0	16

South East Wales (Table T – all invitations and screens)

Part T3: Cancers		Cancers diagnosed by cytology/histology										
Age at 1 st offered appt	Line no.	Total no. with cancer	Invasive status unknown	Non-invasive or possibly micro-invasive	Micro-invasive	Invasive size						Total invasive
						<10mm	>=10mm & <15mm	>=15mm & <20mm	>=20mm & <50mm	>=50mm	Size unknown	
		(25)	(26)	(27)	(28)	(29)	(30)	(31)	(32)	(33)	(34)	(35)
<=44	25	0	0	0	0	0	0	0	0	0	0	0
45-49	26	3	0	0	0	0	0	1	1	1	0	3
50-52	27	49	0	11	0	10	8	6	12	2	0	38
53-54	28	26	0	6	0	4	4	2	10	0	0	20
55-59	29	59	0	16	1	14	9	8	8	1	2	42
60-64	30	88	0	18	0	20	19	13	14	0	4	70
65-69	31	75	0	16	1	17	21	8	9	0	3	58
70	32	9	0	1	0	3	1	2	0	1	1	8
71-74	33	14	0	2	0	4	3	1	2	0	2	12
>=75	34	19	0	5	0	6	2	1	2	0	3	14
50-70	35	306	0	68	2	68	62	39	53	4	10	236
All ages	36	342	0	75	2	78	67	42	58	5	15	265

South East Wales (Table A – first invitation for routine screening)

Part A1: Invitations & outcomes					Outcome of initial screen				Final outcome of assessment				
Age at 1 st offered appt	Line no.	No. of women invited	Lost to follow up after tech inad scr mammo	No. screened tech ad	Not known	Routine recall	Early recall	Referred for assmt	Failed to attend for assmt	Outcome of assmt not known	Routine recall	Early recall	Cancer
		(1)	(2)	(3)	(4)	(5)	(6)	(7)	(8)	(9)	(10)	(11)	(12)
<=44	01	0	0	0	0	0	0	0	0	0	0	0	0
45-49	02	1360	4	946	0	867	0	79	0	0	75	1	3
50-52	03	6429	6	4624	0	4145	0	479	3	0	433	3	40
53-54	04	150	0	80	0	73	0	7	0	0	7	0	0
55-59	05	106	0	13	0	13	0	0	0	0	0	0	0
60-64	06	73	0	12	0	11	0	1	0	0	1	0	0
65-69	07	46	0	5	0	4	0	1	0	0	0	0	1
70	08	8	0	1	0	0	0	1	0	0	0	0	1
71-74	09	1	0	0	0	0	0	0	0	0	0	0	0
>=75	10	0	0	0	0	0	0	0	0	0	0	0	0
50-70	11	6812	6	4735	0	4246	0	489	3	0	441	3	42
All ages	12	8173	10	5681	0	5113	0	568	3	0	516	4	45

Part A2: Assessment			Outcome of assessment up to and including cytology and diagnostic histology										
Age at 1 st offered appt	Line no.	Cancer identified without cyt/hist	Up to and including cytology/core biopsy						Up to and including open biopsy				
			Ref for cyt/core bx	Not referred for open biopsy				Ref for open bx	Total ref for open bx	No/inad result	Benign/normal		Cancer
				No/inad result	Routine recall	Early recall	Cancer				Routine recall	Early recall	
		(13)	(14)	(15)	(16)	(17)	(18)	(19)	(20)	(21)	(22)	(23)	(24)
<=44	13	0	0	0	0	0	0	0	0	0	0	0	0
45-49	14	0	28	0	19	0	3	6	6	0	6	0	0
50-52	15	0	143	0	88	2	36	17	17	0	13	0	4
53-54	16	0	3	0	3	0	0	0	0	0	0	0	0
55-59	17	0	0	0	0	0	0	0	0	0	0	0	0
60-64	18	0	0	0	0	0	0	0	0	0	0	0	0
65-69	19	0	1	0	0	0	1	0	0	0	0	0	0
70	20	0	1	0	0	0	1	0	0	0	0	0	0
71-74	21	0	0	0	0	0	0	0	0	0	0	0	0
>=75	22	0	0	0	0	0	0	0	0	0	0	0	0
50-70	23	0	148	0	91	2	38	17	17	0	13	0	4
All ages	24	0	176	0	110	2	41	23	23	0	19	0	4

South East Wales (Table A – first invitation for routine screening)

Part A3: Cancers		Cancers diagnosed by cytology/histology										
Age at 1 st offered appt	Line no.	Total no. with cancer	Invasive status unknown	Non-invasive or possibly micro-invasive	Micro-invasive	Invasive size						Total invasive
						<10mm	>=10mm & <15mm	>=15mm & <20mm	>=20mm & <50mm	>=50mm	Size unknown	
		(25)	(26)	(27)	(28)	(29)	(30)	(31)	(32)	(33)	(34)	(35)
<=44	25	0	0	0	0	0	0	0	0	0	0	0
45-49	26	3	0	0	0	0	0	1	1	1	0	3
50-52	27	40	0	10	0	8	7	6	9	0	0	30
53-54	28	0	0	0	0	0	0	0	0	0	0	0
55-59	29	0	0	0	0	0	0	0	0	0	0	0
60-64	30	0	0	0	0	0	0	0	0	0	0	0
65-69	31	1	0	0	0	0	0	1	0	0	0	1
70	32	1	0	0	0	0	0	1	0	0	0	1
71-74	33	0	0	0	0	0	0	0	0	0	0	0
>=75	34	0	0	0	0	0	0	0	0	0	0	0
50-70	35	42	0	10	0	8	7	8	9	0	0	32
All ages	36	45	0	10	0	8	7	9	10	1	0	35

South East Wales (Table B – routine invitation to previous non-attenders)

Part B1: Invitations & outcomes					Outcome of initial screen				Final outcome of assessment				
Age at 1 st offered appt	Line no.	No. of women invited	Lost to follow up after tech inad scr mammo	No. screened tech ad	Not known	Routine recall	Early recall	Referred for assmt	Failed to attend for assmt	Outcome of assmt not known	Routine recall	Early recall	Cancer
		(1)	(2)	(3)	(4)	(5)	(6)	(7)	(8)	(9)	(10)	(11)	(12)
<=44	01	0	0	0	0	0	0	0	0	0	0	0	0
45-49	02	1	0	0	0	0	0	0	0	0	0	0	0
50-52	03	300	0	86	0	73	0	13	0	0	12	0	1
53-54	04	1131	3	348	0	320	0	28	1	1	21	3	2
55-59	05	1775	2	217	0	196	0	21	0	1	17	0	3
60-64	06	1177	1	72	0	66	0	6	0	0	5	0	1
65-69	07	769	1	23	0	20	0	3	0	0	2	0	1
70	08	58	0	1	0	1	0	0	0	0	0	0	0
71-74	09	2	0	0	0	0	0	0	0	0	0	0	0
>=75	10	0	0	0	0	0	0	0	0	0	0	0	0
50-70	11	5210	7	747	0	676	0	71	1	2	57	3	8
All ages	12	5213	7	747	0	676	0	71	1	2	57	3	8

Part B2: Assessment			Outcome of assessment up to and including cytology and diagnostic histology										
Age at 1 st offered appt	Line no.	Cancer identified without cyt/hist	Up to and including cytology/core biopsy						Up to and including open biopsy				
			Ref for cyt/core bx	Not referred for open biopsy				Ref for open bx	Total ref for open bx	No/inad result	Benign/normal		Cancer
				No/inad result	Routine recall	Early recall	Cancer				Routine recall	Early recall	
		(13)	(14)	(15)	(16)	(17)	(18)	(19)	(20)	(21)	(22)	(23)	(24)
<=44	13	0	0	0	0	0	0	0	0	0	0	0	0
45-49	14	0	0	0	0	0	0	0	0	0	0	0	0
50-52	15	0	5	0	4	0	1	0	0	0	0	0	0
53-54	16	0	13	0	9	1	2	1	1	0	0	0	0
55-59	17	0	7	0	3	0	2	2	2	0	0	0	1
60-64	18	0	2	0	1	0	1	0	0	0	0	0	0
65-69	19	0	3	0	2	0	1	0	0	0	0	0	0
70	20	0	0	0	0	0	0	0	0	0	0	0	0
71-74	21	0	0	0	0	0	0	0	0	0	0	0	0
>=75	22	0	0	0	0	0	0	0	0	0	0	0	0
50-70	23	0	30	0	19	1	7	3	3	0	0	0	1
All ages	24	0	30	0	19	1	7	3	3	0	0	0	1

South East Wales (Table B – routine invitation to previous non-attenders)

Part B3: Cancers		Cancers diagnosed by cytology/histology										
Age at 1 st offered appt	Line no.	Total no. with cancer	Invasive status unknown	Non-invasive or possibly micro-invasive	Micro-invasive	Invasive size						Total invasive
						<10mm	>=10mm & <15mm	>=15mm & <20mm	>=20mm & <50mm	>=50mm	Size unknown	
		(25)	(26)	(27)	(28)	(29)	(30)	(31)	(32)	(33)	(34)	(35)
<=44	25	0	0	0	0	0	0	0	0	0	0	0
45-49	26	0	0	0	0	0	0	0	0	0	0	0
50-52	27	1	0	0	0	0	0	0	0	1	0	1
53-54	28	2	0	1	0	1	0	0	0	0	0	1
55-59	29	3	0	1	0	1	0	0	0	0	1	2
60-64	30	1	0	0	0	0	0	1	0	0	0	1
65-69	31	1	0	0	0	1	0	0	0	0	0	1
70	32	0	0	0	0	0	0	0	0	0	0	0
71-74	33	0	0	0	0	0	0	0	0	0	0	0
>=75	34	0	0	0	0	0	0	0	0	0	0	0
50-70	35	8	0	2	0	3	0	1	0	1	1	6
All ages	36	8	0	2	0	3	0	1	0	1	1	6

South East Wales (Table C1 – routine invitation to previous attenders, last screen within 5 years)

Part C1-1: Invitations & outcomes					Outcome of initial screen				Final outcome of assessment				
Age at 1 st offered appt	Line no.	No. of women invited	Lost to follow up after tech inad scr mammo	No. screened tech ad	Not known	Routine recall	Early recall	Referred for assmt	Failed to attend for assmt	Outcome of assmt not known	Routine recall	Early recall	Cancer
		(1)	(2)	(3)	(4)	(5)	(6)	(7)	(8)	(9)	(10)	(11)	(12)
<=44	01	0	0	0	0	0	0	0	0	0	0	0	0
45-49	02	4	0	4	0	3	0	1	0	0	1	0	0
50-52	03	732	1	630	0	595	0	35	0	0	30	0	5
53-54	04	3588	1	3094	0	2921	0	173	2	0	148	2	21
55-59	05	8589	5	7524	0	7187	0	337	3	0	283	2	49
60-64	06	9034	4	8026	0	7654	0	372	3	0	285	5	79
65-69	07	7243	9	6374	0	6062	0	312	1	0	240	3	68
70	08	643	0	541	0	517	0	24	0	0	17	0	7
71-74	09	16	0	10	0	10	0	0	0	0	0	0	0
>=75	10	0	0	0	0	0	0	0	0	0	0	0	0
50-70	11	29829	20	26189	0	24936	0	1253	9	0	1003	12	229
All ages	12	29849	20	26203	0	24949	0	1254	9	0	1004	12	229

Part C1-2: Assessment			Outcome of assessment up to and including cytology and diagnostic histology										
Age at 1 st offered appt	Line no.	Cancer identified without cyt/hist	Up to and including cytology/core biopsy						Up to and including open biopsy				
			Ref for cyt/core bx	Not referred for open biopsy				Ref for open bx	Total ref for open bx	No/inad result	Benign/normal		Cancer
				No/inad result	Routine recall	Early recall	Cancer				Routine recall	Early recall	
		(13)	(14)	(15)	(16)	(17)	(18)	(19)	(20)	(21)	(22)	(23)	(24)
<=44	13	0	0	0	0	0	0	0	0	0	0	0	0
45-49	14	0	1	0	1	0	0	0	0	0	0	0	0
50-52	15	0	6	0	1	0	5	0	0	0	0	0	0
53-54	16	0	52	0	22	1	21	8	8	0	8	0	0
55-59	17	0	93	0	39	0	46	8	8	0	5	0	3
60-64	18	0	131	0	46	4	76	5	5	0	2	0	3
65-69	19	0	119	0	48	1	65	5	5	0	2	0	3
70	20	0	8	0	1	0	7	0	0	0	0	0	0
71-74	21	0	0	0	0	0	0	0	0	0	0	0	0
>=75	22	0	0	0	0	0	0	0	0	0	0	0	0
50-70	23	0	409	0	157	6	220	26	26	0	17	0	9
All ages	24	0	410	0	158	6	220	26	26	0	17	0	9

South East Wales (Table C1 – routine invitation to previous attenders, last screen within 5 years)

Part C1-3: Cancers		Cancers diagnosed by cytology/histology										
Age at 1 st offered appt	Line no.	Total no. with cancer	Invasive status unknown	Non-invasive or possibly micro-invasive	Micro-invasive	Invasive size						Total invasive
						<10mm	>=10mm & <15mm	>=15mm & <20mm	>=20mm & <50mm	>=50mm	Size unknown	
		(25)	(26)	(27)	(28)	(29)	(30)	(31)	(32)	(33)	(34)	(35)
<=44	25	0	0	0	0	0	0	0	0	0	0	0
45-49	26	0	0	0	0	0	0	0	0	0	0	0
50-52	27	5	0	1	0	1	1	0	2	0	0	4
53-54	28	21	0	5	0	3	4	2	7	0	0	16
55-59	29	49	0	14	1	11	8	7	6	1	1	34
60-64	30	79	0	18	0	20	16	10	11	0	4	61
65-69	31	68	0	15	1	16	19	6	9	0	2	52
70	32	7	0	0	0	3	1	1	0	1	1	7
71-74	33	0	0	0	0	0	0	0	0	0	0	0
>=75	34	0	0	0	0	0	0	0	0	0	0	0
50-70	35	229	0	53	2	54	49	26	35	2	8	174
All ages	36	229	0	53	2	54	49	26	35	2	8	174

South East Wales (Table C2 – routine invitation to previous attenders, last screen more than 5 years prev)

Part C2-1: Invitations & outcomes					Outcome of initial screen				Final outcome of assessment				
Age at 1 st offered appt	Line no.	No. of women invited	Lost to follow up after tech inad scr mammo	No. screened tech ad	Not known	Routine recall	Early recall	Referred for assmt	Failed to attend for assmt	Outcome of assmt not known	Routine recall	Early recall	Cancer
		(1)	(2)	(3)	(4)	(5)	(6)	(7)	(8)	(9)	(10)	(11)	(12)
<=44	01	0	0	0	0	0	0	0	0	0	0	0	0
45-49	02	0	0	0	0	0	0	0	0	0	0	0	0
50-52	03	8	0	2	0	2	0	0	0	0	0	0	0
53-54	04	35	0	11	0	10	0	1	0	0	1	0	0
55-59	05	966	1	424	0	393	0	31	0	0	28	0	3
60-64	06	1420	1	450	0	429	0	21	0	0	15	0	6
65-69	07	1430	1	381	0	362	0	19	0	0	15	0	4
70	08	147	1	30	0	28	0	2	0	0	2	0	0
71-74	09	6	0	2	0	2	0	0	0	0	0	0	0
>=75	10	0	0	0	0	0	0	0	0	0	0	0	0
50-70	11	4006	4	1298	0	1224	0	74	0	0	61	0	13
All ages	12	4012	4	1300	0	1226	0	74	0	0	61	0	13

Part C2-2: Assessment			Outcome of assessment up to and including cytology and diagnostic histology										
Age at 1 st offered appt	Line no.	Cancer identified without cyt/hist	Up to and including cytology/core biopsy						Up to and including open biopsy				
			Ref for cyt/core bx	Not referred for open biopsy				Ref for open bx	Total ref for open bx	No/inad result	Benign/normal		Cancer
				No/inad result	Routine recall	Early recall	Cancer				Routine recall	Early recall	
		(13)	(14)	(15)	(16)	(17)	(18)	(19)	(20)	(21)	(22)	(23)	(24)
<=44	13	0	0	0	0	0	0	0	0	0	0	0	0
45-49	14	0	0	0	0	0	0	0	0	0	0	0	0
50-52	15	0	0	0	0	0	0	0	0	0	0	0	0
53-54	16	0	0	0	0	0	0	0	0	0	0	0	0
55-59	17	0	5	0	2	0	3	0	0	0	0	0	0
60-64	18	0	10	0	4	0	6	0	0	0	0	0	0
65-69	19	0	5	0	1	0	4	0	0	0	0	0	0
70	20	0	1	0	1	0	0	0	0	0	0	0	0
71-74	21	0	0	0	0	0	0	0	0	0	0	0	0
>=75	22	0	0	0	0	0	0	0	0	0	0	0	0
50-70	23	0	21	0	8	0	13	0	0	0	0	0	0
All ages	24	0	21	0	8	0	13	0	0	0	0	0	0

South East Wales (Table C2 – routine invitation to previous attenders, last screen more than 5 years prev)

Part C2-3: Cancers		Cancers diagnosed by cytology/histology										
Age at 1 st offered appt	Line no.	Total no. with cancer	Invasive status unknown	Non-invasive or possibly micro-invasive	Micro-invasive	Invasive size						Total invasive
						<10mm	>=10mm & <15mm	>=15mm & <20mm	>=20mm & <50mm	>=50mm	Size unknown	
		(25)	(26)	(27)	(28)	(29)	(30)	(31)	(32)	(33)	(34)	(35)
<=44	25	0	0	0	0	0	0	0	0	0	0	0
45-49	26	0	0	0	0	0	0	0	0	0	0	0
50-52	27	0	0	0	0	0	0	0	0	0	0	0
53-54	28	0	0	0	0	0	0	0	0	0	0	0
55-59	29	3	0	0	0	1	1	1	0	0	0	3
60-64	30	6	0	0	0	0	2	2	2	0	0	6
65-69	31	4	0	0	0	0	2	1	0	0	1	4
70	32	0	0	0	0	0	0	0	0	0	0	0
71-74	33	0	0	0	0	0	0	0	0	0	0	0
>=75	34	0	0	0	0	0	0	0	0	0	0	0
50-70	35	13	0	0	0	1	5	4	2	0	1	13
All ages	36	13	0	0	0	1	5	4	2	0	1	13

South East Wales (Table D – early recall)

Part D1: Invitations & outcomes					Outcome of initial screen				Final outcome of assessment				
Age at 1 st offered appt	Line no.	No. of women invited	Lost to follow up after tech inad scr mammo	No. screened tech ad	Not known	Routine recall	Early recall	Referred for assmt	Failed to attend for assmt	Outcome of assmt not known	Routine recall	Early recall	Cancer
		(1)	(2)	(3)	(4)	(5)	(6)	(7)	(8)	(9)	(10)	(11)	(12)
<=44	01	0	0	0	0	0	0	0	0	0	0	0	0
45-49	02	1	0	1	0	0	0	1	0	0	0	1	0
50-52	03	6	0	6	0	0	0	6	0	0	5	1	0
53-54	04	7	0	7	0	0	0	7	0	0	4	3	0
55-59	05	11	0	11	0	0	0	11	0	1	8	1	1
60-64	06	7	0	7	0	0	0	7	0	0	2	5	0
65-69	07	7	0	7	0	0	0	7	0	0	4	3	0
70	08	2	0	2	0	0	0	2	0	0	2	0	0
71-74	09	1	0	1	0	0	0	1	0	0	0	0	1
>=75	10	1	0	1	0	0	0	1	0	0	0	1	0
50-70	11	40	0	40	0	0	0	40	0	1	25	13	1
All ages	12	43	0	43	0	0	0	43	0	1	25	15	2

Part D2: Assessment			Outcome of assessment up to and including cytology and diagnostic histology										
Age at 1 st offered appt	Line no.	Cancer identified without cyt/hist	Up to and including cytology/core biopsy						Up to and including open biopsy				
			Ref for cyt/core bx	Not referred for open biopsy				Ref for open bx	Total ref for open bx	No/inad result	Benign/normal		Cancer
				No/inad result	Routine recall	Early recall	Cancer				Routine recall	Early recall	
		(13)	(14)	(15)	(16)	(17)	(18)	(19)	(20)	(21)	(22)	(23)	(24)
<=44	13	0	0	0	0	0	0	0	0	0	0	0	0
45-49	14	0	0	0	0	0	0	0	0	0	0	0	0
50-52	15	0	1	0	1	0	0	0	0	0	0	0	0
53-54	16	0	2	0	2	0	0	0	0	0	0	0	0
55-59	17	0	2	0	0	1	1	0	0	0	0	0	0
60-64	18	0	0	0	0	0	0	0	0	0	0	0	0
65-69	19	0	1	0	0	1	0	0	0	0	0	0	0
70	20	0	0	0	0	0	0	0	0	0	0	0	0
71-74	21	0	1	0	0	0	1	0	0	0	0	0	0
>=75	22	0	0	0	0	0	0	0	0	0	0	0	0
50-70	23	0	6	0	3	2	1	0	0	0	0	0	0
All ages	24	0	7	0	3	2	2	0	0	0	0	0	0

South East Wales (Table D – early recall)

Part D3: Cancers		Cancers diagnosed by cytology/histology										
Age at 1 st offered appt	Line no.	Total no. with cancer	Invasive status unknown	Non-invasive or possibly micro-invasive	Micro-invasive	Invasive size						Total invasive
						<10mm	>=10mm & <15mm	>=15mm & <20mm	>=20mm & <50mm	>=50mm	Size unknown	
		(25)	(26)	(27)	(28)	(29)	(30)	(31)	(32)	(33)	(34)	(35)
<=44	25	0	0	0	0	0	0	0	0	0	0	0
45-49	26	0	0	0	0	0	0	0	0	0	0	0
50-52	27	0	0	0	0	0	0	0	0	0	0	0
53-54	28	0	0	0	0	0	0	0	0	0	0	0
55-59	29	1	0	1	0	0	0	0	0	0	0	0
60-64	30	0	0	0	0	0	0	0	0	0	0	0
65-69	31	0	0	0	0	0	0	0	0	0	0	0
70	32	0	0	0	0	0	0	0	0	0	0	0
71-74	33	1	0	0	0	0	0	0	1	0	0	1
>=75	34	0	0	0	0	0	0	0	0	0	0	0
50-70	35	1	0	1	0	0	0	0	0	0	0	0
All ages	36	2	0	1	0	0	0	0	1	0	0	1

South East Wales (Table E – self/GP referral of women not previously screened)

Part E1: Invitations & outcomes					Outcome of initial screen				Final outcome of assessment				
Age at 1 st offered appt	Line no.	No. of women invited	Lost to follow up after tech inad scr mammo	No. screened tech ad	Not known	Routine recall	Early recall	Referred for assmt	Failed to attend for assmt	Outcome of assmt not known	Routine recall	Early recall	Cancer
		(1)	(2)	(3)	(4)	(5)	(6)	(7)	(8)	(9)	(10)	(11)	(12)
<=44	01	0	0	0	0	0	0	0	0	0	0	0	0
45-49	02	0	0	8	0	8	0	0	0	0	0	0	0
50-52	03	0	0	110	0	98	0	12	1	0	8	0	3
53-54	04	0	0	33	0	30	0	3	0	0	2	0	1
55-59	05	0	1	45	0	42	0	3	0	0	2	0	1
60-64	06	0	0	24	0	21	0	3	1	0	2	0	0
65-69	07	0	0	8	0	7	0	1	0	0	1	0	0
70	08	0	0	3	0	3	0	0	0	0	0	0	0
71-74	09	0	0	7	0	5	0	2	0	0	2	0	0
>=75	10	0	1	14	0	12	0	2	0	0	0	0	2
50-70	11	0	1	223	0	201	0	22	2	0	15	0	5
All ages	12	0	2	252	0	226	0	26	2	0	17	0	7

Part E2: Assessment				Outcome of assessment up to and including cytology and diagnostic histology									
Age at 1 st offered appt	Line no.	Cancer identified without cyt/hist	Ref for cyt/core bx	Up to and including cytology/core biopsy					Up to and including open biopsy				
				No/inad result	Not referred for open biopsy			Ref for open bx	Total ref for open bx	No/inad result	Benign/normal		Cancer
					Routine recall	Early recall	Cancer				Routine recall	Early recall	
		(13)	(14)	(15)	(16)	(17)	(18)	(19)	(20)	(21)	(22)	(23)	(24)
<=44	13	0	0	0	0	0	0	0	0	0	0	0	0
45-49	14	0	0	0	0	0	0	0	0	0	0	0	0
50-52	15	0	5	0	2	0	2	1	1	0	0	0	1
53-54	16	0	1	0	0	0	1	0	0	0	0	0	0
55-59	17	0	1	0	0	0	1	0	0	0	0	0	0
60-64	18	0	0	0	0	0	0	0	0	0	0	0	0
65-69	19	0	0	0	0	0	0	0	0	0	0	0	0
70	20	0	0	0	0	0	0	0	0	0	0	0	0
71-74	21	0	0	0	0	0	0	0	0	0	0	0	0
>=75	22	0	2	0	0	0	2	0	0	0	0	0	0
50-70	23	0	7	0	2	0	4	1	1	0	0	0	1
All ages	24	0	9	0	2	0	6	1	1	0	0	0	1

South East Wales (Table E – self/GP referral of women not previously screened)

Part E3: Cancers		Cancers diagnosed by cytology/histology										
Age at 1 st offered appt	Line no.	Total no. with cancer	Invasive status unknown	Non-invasive or possibly micro-invasive	Micro-invasive	Invasive size						Total invasive
						<10mm	>=10mm & <15mm	>=15mm & <20mm	>=20mm & <50mm	>=50mm	Size unknown	
		(25)	(26)	(27)	(28)	(29)	(30)	(31)	(32)	(33)	(34)	(35)
<=44	25	0	0	0	0	0	0	0	0	0	0	0
45-49	26	0	0	0	0	0	0	0	0	0	0	0
50-52	27	3	0	0	0	1	0	0	1	1	0	3
53-54	28	1	0	0	0	0	0	0	1	0	0	1
55-59	29	1	0	0	0	1	0	0	0	0	0	1
60-64	30	0	0	0	0	0	0	0	0	0	0	0
65-69	31	0	0	0	0	0	0	0	0	0	0	0
70	32	0	0	0	0	0	0	0	0	0	0	0
71-74	33	0	0	0	0	0	0	0	0	0	0	0
>=75	34	2	0	1	0	1	0	0	0	0	0	1
50-70	35	5	0	0	0	2	0	0	2	1	0	5
All ages	36	7	0	1	0	3	0	0	2	1	0	6

South East Wales (Table F1 – self/GP referrals of women previously screened, last screen within 5 years)

Part F1-1: Invitations & outcomes					Outcome of initial screen				Final outcome of assessment				
Age at 1 st offered appt	Line no.	No. of women invited	Lost to follow up after tech inad scr mammo	No. screened tech ad	Not known	Routine recall	Early recall	Referred for assmt	Failed to attend for assmt	Outcome of assmt not known	Routine recall	Early recall	Cancer
		(1)	(2)	(3)	(4)	(5)	(6)	(7)	(8)	(9)	(10)	(11)	(12)
<=44	01	0	0	0	0	0	0	0	0	0	0	0	0
45-49	02	0	0	0	0	0	0	0	0	0	0	0	0
50-52	03	0	0	20	0	19	0	1	0	0	1	0	0
53-54	04	0	1	75	0	70	0	5	0	0	3	0	2
55-59	05	0	1	170	0	158	0	12	0	0	10	0	2
60-64	06	0	0	145	0	139	0	6	0	0	5	0	1
65-69	07	0	0	70	0	67	0	3	0	0	2	0	1
70	08	0	0	141	0	135	0	6	0	0	5	0	1
71-74	09	0	0	815	0	768	0	47	0	0	35	0	12
>=75	10	0	0	524	0	500	0	24	0	0	19	0	5
50-70	11	0	2	621	0	588	0	33	0	0	26	0	7
All ages	12	0	2	1960	0	1856	0	104	0	0	80	0	24

Part F1-2: Assessment			Outcome of assessment up to and including cytology and diagnostic histology										
Age at 1 st offered appt	Line no.	Cancer identified without cyt/hist	Up to and including cytology/core biopsy						Up to and including open biopsy				
			Ref for cyt/core bx	Not referred for open biopsy				Ref for open bx	Total ref for open bx	No/inad result	Benign/normal		Cancer
				No/inad result	Routine recall	Early recall	Cancer				Routine recall	Early recall	
		(13)	(14)	(15)	(16)	(17)	(18)	(19)	(20)	(21)	(22)	(23)	(24)
<=44	13	0	0	0	0	0	0	0	0	0	0	0	0
45-49	14	0	0	0	0	0	0	0	0	0	0	0	0
50-52	15	0	0	0	0	0	0	0	0	0	0	0	0
53-54	16	0	2	0	0	0	2	0	0	0	0	0	0
55-59	17	0	4	0	1	0	2	1	1	0	1	0	0
60-64	18	0	1	0	0	0	1	0	0	0	0	0	0
65-69	19	0	2	0	1	0	1	0	0	0	0	0	0
70	20	0	2	0	1	0	1	0	0	0	0	0	0
71-74	21	0	21	0	8	0	12	1	1	0	1	0	0
>=75	22	0	8	0	2	0	5	1	1	0	1	0	0
50-70	23	0	11	0	3	0	7	1	1	0	1	0	0
All ages	24	0	40	0	13	0	24	3	3	0	3	0	0

South East Wales (Table F1 – self/GP referrals of women previously screened, last screen within 5 years)

Part F1-3: Cancers		Cancers diagnosed by cytology/histology										
Age at 1 st offered appt	Line no.	Total no. with cancer	Invasive status unknown	Non-invasive or possibly micro-invasive	Micro-invasive	Invasive size						Total invasive
						<10mm	>=10mm & <15mm	>=15mm & <20mm	>=20mm & <50mm	>=50mm	Size unknown	
		(25)	(26)	(27)	(28)	(29)	(30)	(31)	(32)	(33)	(34)	(35)
<=44	25	0	0	0	0	0	0	0	0	0	0	0
45-49	26	0	0	0	0	0	0	0	0	0	0	0
50-52	27	0	0	0	0	0	0	0	0	0	0	0
53-54	28	2	0	0	0	0	0	0	2	0	0	2
55-59	29	2	0	0	0	0	0	0	2	0	0	2
60-64	30	1	0	0	0	0	0	0	1	0	0	1
65-69	31	1	0	1	0	0	0	0	0	0	0	0
70	32	1	0	1	0	0	0	0	0	0	0	0
71-74	33	12	0	2	0	4	3	0	1	0	2	10
>=75	34	5	0	1	0	2	1	0	1	0	0	4
50-70	35	7	0	2	0	0	0	0	5	0	0	5
All ages	36	24	0	5	0	6	4	0	7	0	2	19

South East Wales (Table F2 – self/GP referrals of women previously screened, last screen more than 5 years prev)

Part F2-1: Invitations & outcomes					Outcome of initial screen				Final outcome of assessment				
Age at 1 st offered appt	Line no.	No. of women invited	Lost to follow up after tech inad scr mammo	No. screened tech ad	Not known	Routine recall	Early recall	Referred for assmt	Failed to attend for assmt	Outcome of assmt not known	Routine recall	Early recall	Cancer
		(1)	(2)	(3)	(4)	(5)	(6)	(7)	(8)	(9)	(10)	(11)	(12)
<=44	01	0	0	0	0	0	0	0	0	0	0	0	0
45-49	02	0	0	0	0	0	0	0	0	0	0	0	0
50-52	03	0	0	0	0	0	0	0	0	0	0	0	0
53-54	04	0	0	0	0	0	0	0	0	0	0	0	0
55-59	05	0	0	21	0	21	0	0	0	0	0	0	0
60-64	06	0	0	30	0	28	0	2	0	0	1	0	1
65-69	07	0	0	22	0	21	0	1	0	0	1	0	0
70	08	0	0	8	0	7	0	1	0	0	1	0	0
71-74	09	0	0	65	0	59	0	6	0	0	5	0	1
>=75	10	0	2	178	0	156	0	22	0	0	10	0	12
50-70	11	0	0	81	0	77	0	4	0	0	3	0	1
All ages	12	0	2	324	0	292	0	32	0	0	18	0	14

Part F2-2: Assessment			Outcome of assessment up to and including cytology and diagnostic histology										
Age at 1 st offered appt	Line no.	Cancer identified without cyt/hist	Up to and including cytology/core biopsy						Up to and including open biopsy				
			Ref for cyt/core bx	Not referred for open biopsy				Ref for open bx	Total ref for open bx	No/inad result	Benign/normal		Cancer
				No/inad result	Routine recall	Early recall	Cancer				Routine recall	Early recall	
		(13)	(14)	(15)	(16)	(17)	(18)	(19)	(20)	(21)	(22)	(23)	(24)
<=44	13	0	0	0	0	0	0	0	0	0	0	0	0
45-49	14	0	0	0	0	0	0	0	0	0	0	0	0
50-52	15	0	0	0	0	0	0	0	0	0	0	0	0
53-54	16	0	0	0	0	0	0	0	0	0	0	0	0
55-59	17	0	0	0	0	0	0	0	0	0	0	0	0
60-64	18	0	2	0	1	0	1	0	0	0	0	0	0
65-69	19	0	0	0	0	0	0	0	0	0	0	0	0
70	20	0	0	0	0	0	0	0	0	0	0	0	0
71-74	21	0	1	0	0	0	1	0	0	0	0	0	0
>=75	22	0	14	0	2	0	11	1	1	0	0	0	1
50-70	23	0	2	0	1	0	1	0	0	0	0	0	0
All ages	24	0	17	0	3	0	13	1	1	0	0	0	1

South East Wales (Table F2 – self/GP referrals of women previously screened, last screen more than 5 years prev)

Part F2-3: Cancers		Cancers diagnosed by cytology/histology										
Age at 1 st offered appt	Line no.	Total no. with cancer	Invasive status unknown	Non-invasive or possibly micro-invasive	Micro-invasive	Invasive size					Size unknown	Total invasive
						<10mm	>=10mm & <15mm	>=15mm & <20mm	>=20mm & <50mm	>=50mm		
		(25)	(26)	(27)	(28)	(29)	(30)	(31)	(32)	(33)	(34)	(35)
<=44	25	0	0	0	0	0	0	0	0	0	0	0
45-49	26	0	0	0	0	0	0	0	0	0	0	0
50-52	27	0	0	0	0	0	0	0	0	0	0	0
53-54	28	0	0	0	0	0	0	0	0	0	0	0
55-59	29	0	0	0	0	0	0	0	0	0	0	0
60-64	30	1	0	0	0	0	1	0	0	0	0	1
65-69	31	0	0	0	0	0	0	0	0	0	0	0
70	32	0	0	0	0	0	0	0	0	0	0	0
71-74	33	1	0	0	0	0	0	1	0	0	0	1
>=75	34	12	0	3	0	3	1	1	1	0	3	9
50-70	35	1	0	0	0	0	1	0	0	0	0	1
All ages	36	14	0	3	0	3	2	2	1	0	3	11

Appendix E - 2011-12 KC62 South West Wales

South West Wales (Table T – all invitations and screens)

Part T1: Invitations & outcomes					Outcome of initial screen				Final outcome of assessment				
Age at 1 st offered appt	Line no.	No. of women invited	Lost to follow up after tech inad scr mammo	No. screened tech ad	Not known	Routine recall	Early recall	Referred for assmt	Failed to attend for assmt	Outcome of assmt not known	Routine recall	Early recall	Cancer
		(1)	(2)	(3)	(4)	(5)	(6)	(7)	(8)	(9)	(10)	(11)	(12)
<=44	01	0	0	0	0	0	0	0	0	0	0	0	0
45-49	02	554	3	410	0	365	0	45	0	0	41	3	1
50-52	03	2791	4	2120	0	1850	0	270	2	0	231	6	31
53-54	04	2022	3	1572	0	1478	0	94	1	0	75	2	16
55-59	05	4736	10	3652	0	3471	0	181	2	0	142	0	37
60-64	06	5161	10	4005	0	3787	0	218	1	0	161	3	53
65-69	07	4376	8	3421	0	3210	0	211	3	0	151	3	54
70	08	395	0	349	0	329	0	20	0	0	15	0	5
71-74	09	5	1	456	0	441	0	15	0	0	8	0	7
>=75	10	0	2	455	0	430	0	25	0	0	16	0	9
50-70	11	19481	35	15119	0	14125	0	994	9	0	775	14	196
All ages	12	20040	41	16440	0	15361	0	1079	9	0	840	17	213

Part T2: Assessment			Outcome of assessment up to and including cytology and diagnostic histology										
Age at 1 st offered appt	Line no.	Cancer identified without cyt/hist	Up to and including cytology/core biopsy						Up to and including open biopsy				
			Ref for cyt/core bx	Not referred for open biopsy				Ref for open bx	Total ref for open bx	No/inad result	Benign/normal		Cancer
				No/inad result	Routine recall	Early recall	Cancer				Routine recall	Early recall	
		(13)	(14)	(15)	(16)	(17)	(18)	(19)	(20)	(21)	(22)	(23)	(24)
<=44	13	0	0	0	0	0	0	0	0	0	0	0	0
45-49	14	0	19	0	14	2	1	2	2	0	2	0	0
50-52	15	0	133	0	89	3	28	13	13	0	10	0	3
53-54	16	0	40	0	22	0	14	4	5	0	3	0	2
55-59	17	0	72	0	25	0	36	11	11	0	10	0	1
60-64	18	0	98	0	36	2	50	10	10	0	7	0	3
65-69	19	0	90	0	32	1	51	6	6	0	3	0	3
70	20	0	8	0	3	0	5	0	0	0	0	0	0
71-74	21	0	8	0	1	0	6	1	1	0	0	0	1
>=75	22	0	14	0	5	0	9	0	0	0	0	0	0
50-70	23	0	441	0	207	6	184	44	45	0	33	0	12
All ages	24	0	482	0	227	8	200	47	48	0	35	0	13

South West Wales (Table T – all invitations and screens)

Part T3: Cancers		Cancers diagnosed by cytology/histology										
Age at 1 st offered appt	Line no.	Total no. with cancer	Invasive status unknown	Non-invasive or possibly micro-invasive	Micro-invasive	Invasive size						Total invasive
						<10mm	>=10mm & <15mm	>=15mm & <20mm	>=20mm & <50mm	>=50mm	Size unknown	
		(25)	(26)	(27)	(28)	(29)	(30)	(31)	(32)	(33)	(34)	(35)
<=44	25	0	0	0	0	0	0	0	0	0	0	0
45-49	26	1	0	1	0	0	0	0	0	0	0	0
50-52	27	31	0	10	0	7	2	3	8	0	1	21
53-54	28	16	0	7	0	4	2	1	2	0	0	9
55-59	29	37	0	10	0	3	8	7	5	2	2	27
60-64	30	53	0	11	0	16	9	8	8	1	0	42
65-69	31	54	0	13	0	11	9	13	7	0	1	41
70	32	5	0	1	0	1	1	0	2	0	0	4
71-74	33	7	0	0	0	2	0	2	3	0	0	7
>=75	34	9	0	3	0	0	2	2	1	0	1	6
50-70	35	196	0	52	0	42	31	32	32	3	4	144
All ages	36	213	0	56	0	44	33	36	36	3	5	157

South West Wales (Table A – first invitation for routine screening)

Part A1: Invitations & outcomes					Outcome of initial screen				Final outcome of assessment				
Age at 1 st offered appt	Line no.	No. of women invited	Lost to follow up after tech inad scr mammo	No. screened tech ad	Not known	Routine recall	Early recall	Referred for assmt	Failed to attend for assmt	Outcome of assmt not known	Routine recall	Early recall	Cancer
		(1)	(2)	(3)	(4)	(5)	(6)	(7)	(8)	(9)	(10)	(11)	(12)
<=44	01	0	0	0	0	0	0	0	0	0	0	0	0
45-49	02	554	3	410	0	365	0	45	0	0	41	3	1
50-52	03	2438	3	1813	0	1570	0	243	2	0	206	5	30
53-54	04	79	0	34	0	32	0	2	0	0	1	1	0
55-59	05	57	0	11	0	9	0	2	1	0	1	0	0
60-64	06	42	0	8	0	7	0	1	0	0	0	0	1
65-69	07	27	0	3	0	3	0	0	0	0	0	0	0
70	08	1	0	0	0	0	0	0	0	0	0	0	0
71-74	09	0	0	0	0	0	0	0	0	0	0	0	0
>=75	10	0	0	0	0	0	0	0	0	0	0	0	0
50-70	11	2644	3	1869	0	1621	0	248	3	0	208	6	31
All ages	12	3198	6	2279	0	1986	0	293	3	0	249	9	32

Part A2: Assessment			Outcome of assessment up to and including cytology and diagnostic histology										
Age at 1 st offered appt	Line no.	Cancer identified without cyt/hist	Up to and including cytology/core biopsy						Up to and including open biopsy				
			Ref for cyt/core bx	Not referred for open biopsy				Ref for open bx	Total ref for open bx	No/inad result	Benign/normal		Cancer
				No/inad result	Routine recall	Early recall	Cancer				Routine recall	Early recall	
		(13)	(14)	(15)	(16)	(17)	(18)	(19)	(20)	(21)	(22)	(23)	(24)
<=44	13	0	0	0	0	0	0	0	0	0	0	0	0
45-49	14	0	19	0	14	2	1	2	2	0	2	0	0
50-52	15	0	121	0	81	3	27	10	10	0	7	0	3
53-54	16	0	1	0	1	0	0	0	0	0	0	0	0
55-59	17	0	0	0	0	0	0	0	0	0	0	0	0
60-64	18	0	1	0	0	0	1	0	0	0	0	0	0
65-69	19	0	0	0	0	0	0	0	0	0	0	0	0
70	20	0	0	0	0	0	0	0	0	0	0	0	0
71-74	21	0	0	0	0	0	0	0	0	0	0	0	0
>=75	22	0	0	0	0	0	0	0	0	0	0	0	0
50-70	23	0	123	0	82	3	28	10	10	0	7	0	3
All ages	24	0	142	0	96	5	29	12	12	0	9	0	3

South West Wales (Table A – first invitation for routine screening)

Part A3: Cancers		Cancers diagnosed by cytology/histology										
Age at 1 st offered appt	Line no.	Total no. with cancer	Invasive status unknown	Non-invasive or possibly micro-invasive	Micro-invasive	Invasive size						Total invasive
						<10mm	>=10mm & <15mm	>=15mm & <20mm	>=20mm & <50mm	>=50mm	Size unknown	
		(25)	(26)	(27)	(28)	(29)	(30)	(31)	(32)	(33)	(34)	(35)
<=44	25	0	0	0	0	0	0	0	0	0	0	0
45-49	26	1	0	1	0	0	0	0	0	0	0	0
50-52	27	30	0	9	0	7	2	3	8	0	1	21
53-54	28	0	0	0	0	0	0	0	0	0	0	0
55-59	29	0	0	0	0	0	0	0	0	0	0	0
60-64	30	1	0	1	0	0	0	0	0	0	0	0
65-69	31	0	0	0	0	0	0	0	0	0	0	0
70	32	0	0	0	0	0	0	0	0	0	0	0
71-74	33	0	0	0	0	0	0	0	0	0	0	0
>=75	34	0	0	0	0	0	0	0	0	0	0	0
50-70	35	31	0	10	0	7	2	3	8	0	1	21
All ages	36	32	0	11	0	7	2	3	8	0	1	21

South West Wales (Table B – routine invitation to previous non-attenders)

Part B1: Invitations & outcomes					Outcome of initial screen				Final outcome of assessment				
Age at 1 st offered appt	Line no.	No. of women invited	Lost to follow up after tech inad scr mammo	No. screened tech ad	Not known	Routine recall	Early recall	Referred for assmt	Failed to attend for assmt	Outcome of assmt not known	Routine recall	Early recall	Cancer
		(1)	(2)	(3)	(4)	(5)	(6)	(7)	(8)	(9)	(10)	(11)	(12)
<=44	01	0	0	0	0	0	0	0	0	0	0	0	0
45-49	02	0	0	0	0	0	0	0	0	0	0	0	0
50-52	03	83	0	33	0	28	0	5	0	0	5	0	0
53-54	04	388	2	116	0	103	0	13	0	0	9	0	4
55-59	05	566	1	73	0	63	0	10	0	0	9	0	1
60-64	06	385	2	25	0	21	0	4	0	0	4	0	0
65-69	07	283	0	13	0	12	0	1	1	0	0	0	0
70	08	10	0	1	0	1	0	0	0	0	0	0	0
71-74	09	0	0	0	0	0	0	0	0	0	0	0	0
>=75	10	0	0	0	0	0	0	0	0	0	0	0	0
50-70	11	1715	5	261	0	228	0	33	1	0	27	0	5
All ages	12	1715	5	261	0	228	0	33	1	0	27	0	5

Part B2: Assessment			Outcome of assessment up to and including cytology and diagnostic histology										
Age at 1 st offered appt	Line no.	Cancer identified without cyt/hist	Up to and including cytology/core biopsy						Up to and including open biopsy				
			Ref for cyt/core bx	Not referred for open biopsy				Ref for open bx	Total ref for open bx	No/inad result	Benign/normal		Cancer
				No/inad result	Routine recall	Early recall	Cancer				Routine recall	Early recall	
		(13)	(14)	(15)	(16)	(17)	(18)	(19)	(20)	(21)	(22)	(23)	(24)
<=44	13	0	0	0	0	0	0	0	0	0	0	0	0
45-49	14	0	0	0	0	0	0	0	0	0	0	0	0
50-52	15	0	3	0	2	0	0	1	1	0	1	0	0
53-54	16	0	7	0	3	0	3	1	2	0	1	0	1
55-59	17	0	6	0	4	0	1	1	1	0	1	0	0
60-64	18	0	2	0	2	0	0	0	0	0	0	0	0
65-69	19	0	0	0	0	0	0	0	0	0	0	0	0
70	20	0	0	0	0	0	0	0	0	0	0	0	0
71-74	21	0	0	0	0	0	0	0	0	0	0	0	0
>=75	22	0	0	0	0	0	0	0	0	0	0	0	0
50-70	23	0	18	0	11	0	4	3	4	0	3	0	1
All ages	24	0	18	0	11	0	4	3	4	0	3	0	1

South West Wales (Table B – routine invitation to previous non-attenders)

Part B3: Cancers		Cancers diagnosed by cytology/histology										
Age at 1 st offered appt	Line no.	Total no. with cancer	Invasive status unknown	Non-invasive or possibly micro-invasive	Micro-invasive	Invasive size						Total invasive
						<10mm	>=10mm & <15mm	>=15mm & <20mm	>=20mm & <50mm	>=50mm	Size unknown	
		(25)	(26)	(27)	(28)	(29)	(30)	(31)	(32)	(33)	(34)	(35)
<=44	25	0	0	0	0	0	0	0	0	0	0	0
45-49	26	0	0	0	0	0	0	0	0	0	0	0
50-52	27	0	0	0	0	0	0	0	0	0	0	0
53-54	28	4	0	3	0	0	0	0	1	0	0	1
55-59	29	1	0	0	0	1	0	0	0	0	0	1
60-64	30	0	0	0	0	0	0	0	0	0	0	0
65-69	31	0	0	0	0	0	0	0	0	0	0	0
70	32	0	0	0	0	0	0	0	0	0	0	0
71-74	33	0	0	0	0	0	0	0	0	0	0	0
>=75	34	0	0	0	0	0	0	0	0	0	0	0
50-70	35	5	0	3	0	1	0	0	1	0	0	2
All ages	36	5	0	3	0	1	0	0	1	0	0	2

South West Wales (Table C1 – routine invitation to previous attenders, last screen within 5 years)

Part C1-1: Invitations & outcomes					Outcome of initial screen				Final outcome of assessment				
Age at 1 st offered appt	Line no.	No. of women invited	Lost to follow up after tech inad scr mammo	No. screened tech ad	Not known	Routine recall	Early recall	Referred for assmt	Failed to attend for assmt	Outcome of assmt not known	Routine recall	Early recall	Cancer
		(1)	(2)	(3)	(4)	(5)	(6)	(7)	(8)	(9)	(10)	(11)	(12)
<=44	01	0	0	0	0	0	0	0	0	0	0	0	0
45-49	02	0	0	0	0	0	0	0	0	0	0	0	0
50-52	03	258	1	220	0	207	0	13	0	0	12	0	1
53-54	04	1527	1	1347	0	1282	0	65	0	0	54	1	10
55-59	05	3708	8	3278	0	3132	0	146	1	0	114	0	31
60-64	06	4121	6	3682	0	3493	0	189	1	0	140	1	47
65-69	07	3521	5	3188	0	3007	0	181	1	0	129	3	48
70	08	324	0	276	0	261	0	15	0	0	10	0	5
71-74	09	5	0	4	0	3	0	1	0	0	0	0	1
>=75	10	0	0	0	0	0	0	0	0	0	0	0	0
50-70	11	13459	21	11991	0	11382	0	609	3	0	459	5	142
All ages	12	13464	21	11995	0	11385	0	610	3	0	459	5	143

Part C1-2: Assessment			Outcome of assessment up to and including cytology and diagnostic histology										
Age at 1 st offered appt	Line no.	Cancer identified without cyt/hist	Up to and including cytology/core biopsy						Up to and including open biopsy				
			Ref for cyt/core bx	Not referred for open biopsy				Ref for open bx	Total ref for open bx	No/inad result	Benign/normal		Cancer
				No/inad result	Routine recall	Early recall	Cancer				Routine recall	Early recall	
		(13)	(14)	(15)	(16)	(17)	(18)	(19)	(20)	(21)	(22)	(23)	(24)
<=44	13	0	0	0	0	0	0	0	0	0	0	0	0
45-49	14	0	0	0	0	0	0	0	0	0	0	0	0
50-52	15	0	5	0	3	0	1	1	1	0	1	0	0
53-54	16	0	27	0	16	0	9	2	2	0	1	0	1
55-59	17	0	54	0	17	0	30	7	7	0	6	0	1
60-64	18	0	83	0	29	0	44	10	10	0	7	0	3
65-69	19	0	78	0	26	1	45	6	6	0	3	0	3
70	20	0	6	0	1	0	5	0	0	0	0	0	0
71-74	21	0	1	0	0	0	1	0	0	0	0	0	0
>=75	22	0	0	0	0	0	0	0	0	0	0	0	0
50-70	23	0	253	0	92	1	134	26	26	0	18	0	8
All ages	24	0	254	0	92	1	135	26	26	0	18	0	8

South West Wales (Table C1 – routine invitation to previous attenders, last screen within 5 years)

Part C1-3: Cancers		Cancers diagnosed by cytology/histology										
Age at 1 st offered appt	Line no.	Total no. with cancer	Invasive status unknown	Non-invasive or possibly micro-invasive	Micro-invasive	Invasive size						Total invasive
						<10mm	>=10mm & <15mm	>=15mm & <20mm	>=20mm & <50mm	>=50mm	Size unknown	
		(25)	(26)	(27)	(28)	(29)	(30)	(31)	(32)	(33)	(34)	(35)
<=44	25	0	0	0	0	0	0	0	0	0	0	0
45-49	26	0	0	0	0	0	0	0	0	0	0	0
50-52	27	1	0	1	0	0	0	0	0	0	0	0
53-54	28	10	0	3	0	3	2	1	1	0	0	7
55-59	29	31	0	9	0	2	7	5	5	1	2	22
60-64	30	47	0	9	0	14	9	6	8	1	0	38
65-69	31	48	0	13	0	11	7	11	5	0	1	35
70	32	5	0	1	0	1	1	0	2	0	0	4
71-74	33	1	0	0	0	0	0	1	0	0	0	1
>=75	34	0	0	0	0	0	0	0	0	0	0	0
50-70	35	142	0	36	0	31	26	23	21	2	3	106
All ages	36	143	0	36	0	31	26	24	21	2	3	107

South West Wales (Table C2 – routine invitation to previous attenders, last screen more than 5 years prev)

Part C2-1: Invitations & outcomes					Outcome of initial screen				Final outcome of assessment				
Age at 1 st offered appt	Line no.	No. of women invited	Lost to follow up after tech inad scr mammo	No. screened tech ad	Not known	Routine recall	Early recall	Referred for assmt	Failed to attend for assmt	Outcome of assmt not known	Routine recall	Early recall	Cancer
		(1)	(2)	(3)	(4)	(5)	(6)	(7)	(8)	(9)	(10)	(11)	(12)
<=44	01	0	0	0	0	0	0	0	0	0	0	0	0
45-49	02	0	0	0	0	0	0	0	0	0	0	0	0
50-52	03	7	0	3	0	3	0	0	0	0	0	0	0
53-54	04	27	0	11	0	10	0	1	0	0	1	0	0
55-59	05	403	1	182	0	167	0	15	0	0	10	0	5
60-64	06	608	2	219	0	203	0	16	0	0	10	2	4
65-69	07	540	2	159	0	140	0	19	1	0	13	0	5
70	08	60	0	16	0	14	0	2	0	0	2	0	0
71-74	09	0	0	0	0	0	0	0	0	0	0	0	0
>=75	10	0	0	0	0	0	0	0	0	0	0	0	0
50-70	11	1645	5	590	0	537	0	53	1	0	36	2	14
All ages	12	1645	5	590	0	537	0	53	1	0	36	2	14

Part C2-2: Assessment			Outcome of assessment up to and including cytology and diagnostic histology										
Age at 1 st offered appt	Line no.	Cancer identified without cyt/hist	Up to and including cytology/core biopsy						Up to and including open biopsy				
			Ref for cyt/core bx	Not referred for open biopsy				Ref for open bx	Total ref for open bx	No/inad result	Benign/normal		Cancer
				No/inad result	Routine recall	Early recall	Cancer				Routine recall	Early recall	
		(13)	(14)	(15)	(16)	(17)	(18)	(19)	(20)	(21)	(22)	(23)	(24)
<=44	13	0	0	0	0	0	0	0	0	0	0	0	0
45-49	14	0	0	0	0	0	0	0	0	0	0	0	0
50-52	15	0	0	0	0	0	0	0	0	0	0	0	0
53-54	16	0	1	0	1	0	0	0	0	0	0	0	0
55-59	17	0	8	0	1	0	5	2	2	0	2	0	0
60-64	18	0	9	0	3	2	4	0	0	0	0	0	0
65-69	19	0	10	0	5	0	5	0	0	0	0	0	0
70	20	0	2	0	2	0	0	0	0	0	0	0	0
71-74	21	0	0	0	0	0	0	0	0	0	0	0	0
>=75	22	0	0	0	0	0	0	0	0	0	0	0	0
50-70	23	0	30	0	12	2	14	2	2	0	2	0	0
All ages	24	0	30	0	12	2	14	2	2	0	2	0	0

South West Wales (Table C2 – routine invitation to previous attenders, last screen more than 5 years prev)

Part C2-3: Cancers		Cancers diagnosed by cytology/histology										
Age at 1 st offered appt	Line no.	Total no. with cancer	Invasive status unknown	Non-invasive or possibly micro-invasive	Micro-invasive	Invasive size					Size unknown	Total invasive
						<10mm	>=10mm & <15mm	>=15mm & <20mm	>=20mm & <50mm	>=50mm		
		(25)	(26)	(27)	(28)	(29)	(30)	(31)	(32)	(33)	(34)	(35)
<=44	25	0	0	0	0	0	0	0	0	0	0	0
45-49	26	0	0	0	0	0	0	0	0	0	0	0
50-52	27	0	0	0	0	0	0	0	0	0	0	0
53-54	28	0	0	0	0	0	0	0	0	0	0	0
55-59	29	5	0	1	0	0	1	2	0	1	0	4
60-64	30	4	0	1	0	1	0	2	0	0	0	3
65-69	31	5	0	0	0	0	1	2	2	0	0	5
70	32	0	0	0	0	0	0	0	0	0	0	0
71-74	33	0	0	0	0	0	0	0	0	0	0	0
>=75	34	0	0	0	0	0	0	0	0	0	0	0
50-70	35	14	0	2	0	1	2	6	2	1	0	12
All ages	36	14	0	2	0	1	2	6	2	1	0	12

South West Wales (Table D – early recall)

Part D1: Invitations & outcomes					Outcome of initial screen				Final outcome of assessment				
Age at 1 st offered appt	Line no.	No. of women invited	Lost to follow up after tech inad scr mammo	No. screened tech ad	Not known	Routine recall	Early recall	Referred for assmt	Failed to attend for assmt	Outcome of assmt not known	Routine recall	Early recall	Cancer
		(1)	(2)	(3)	(4)	(5)	(6)	(7)	(8)	(9)	(10)	(11)	(12)
<=44	01	0	0	0	0	0	0	0	0	0	0	0	0
45-49	02	0	0	0	0	0	0	0	0	0	0	0	0
50-52	03	5	0	5	0	0	0	5	0	0	4	1	0
53-54	04	1	0	1	0	0	0	1	0	0	1	0	0
55-59	05	2	0	2	0	0	0	2	0	0	2	0	0
60-64	06	5	0	5	0	0	0	5	0	0	5	0	0
65-69	07	5	0	5	0	0	0	5	0	0	5	0	0
70	08	0	0	0	0	0	0	0	0	0	0	0	0
71-74	09	0	0	0	0	0	0	0	0	0	0	0	0
>=75	10	0	0	0	0	0	0	0	0	0	0	0	0
50-70	11	18	0	18	0	0	0	18	0	0	17	1	0
All ages	12	18	0	18	0	0	0	18	0	0	17	1	0

Part D2: Assessment				Outcome of assessment up to and including cytology and diagnostic histology									
Age at 1 st offered appt	Line no.	Cancer identified without cyt/hist	Ref for cyt/core bx	Up to and including cytology/core biopsy					Up to and including open biopsy				
				No/inad result	Not referred for open biopsy			Ref for open bx	Total ref for open bx	No/inad result	Benign/normal		Cancer
					Routine recall	Early recall	Cancer				Routine recall	Early recall	
		(13)	(14)	(15)	(16)	(17)	(18)	(19)	(20)	(21)	(22)	(23)	(24)
<=44	13	0	0	0	0	0	0	0	0	0	0	0	0
45-49	14	0	0	0	0	0	0	0	0	0	0	0	0
50-52	15	0	0	0	0	0	0	0	0	0	0	0	0
53-54	16	0	0	0	0	0	0	0	0	0	0	0	0
55-59	17	0	0	0	0	0	0	0	0	0	0	0	0
60-64	18	0	1	0	1	0	0	0	0	0	0	0	0
65-69	19	0	0	0	0	0	0	0	0	0	0	0	0
70	20	0	0	0	0	0	0	0	0	0	0	0	0
71-74	21	0	0	0	0	0	0	0	0	0	0	0	0
>=75	22	0	0	0	0	0	0	0	0	0	0	0	0
50-70	23	0	1	0	1	0	0	0	0	0	0	0	0
All ages	24	0	1	0	1	0	0	0	0	0	0	0	0

South West Wales (Table D – early recall)

Part D3: Cancers		Cancers diagnosed by cytology/histology										
Age at 1 st offered appt	Line no.	Total no. with cancer	Invasive status unknown	Non-invasive or possibly micro-invasive	Micro-invasive	Invasive size						Total invasive
						<10mm	>=10mm & <15mm	>=15mm & <20mm	>=20mm & <50mm	>=50mm	Size unknown	
		(25)	(26)	(27)	(28)	(29)	(30)	(31)	(32)	(33)	(34)	(35)
<=44	25	0	0	0	0	0	0	0	0	0	0	0
45-49	26	0	0	0	0	0	0	0	0	0	0	0
50-52	27	0	0	0	0	0	0	0	0	0	0	0
53-54	28	0	0	0	0	0	0	0	0	0	0	0
55-59	29	0	0	0	0	0	0	0	0	0	0	0
60-64	30	0	0	0	0	0	0	0	0	0	0	0
65-69	31	0	0	0	0	0	0	0	0	0	0	0
70	32	0	0	0	0	0	0	0	0	0	0	0
71-74	33	0	0	0	0	0	0	0	0	0	0	0
>=75	34	0	0	0	0	0	0	0	0	0	0	0
50-70	35	0	0	0	0	0	0	0	0	0	0	0
All ages	36	0	0	0	0	0	0	0	0	0	0	0

South West Wales (Table E – self/GP referral of women not previously screened)

Part E1: Invitations & outcomes					Outcome of initial screen				Final outcome of assessment				
Age at 1 st offered appt	Line no.	No. of women invited	Lost to follow up after tech inad scr mammo	No. screened tech ad	Not known	Routine recall	Early recall	Referred for assmt	Failed to attend for assmt	Outcome of assmt not known	Routine recall	Early recall	Cancer
		(1)	(2)	(3)	(4)	(5)	(6)	(7)	(8)	(9)	(10)	(11)	(12)
<=44	01	0	0	0	0	0	0	0	0	0	0	0	0
45-49	02	0	0	0	0	0	0	0	0	0	0	0	0
50-52	03	0	0	36	0	32	0	4	0	0	4	0	0
53-54	04	0	0	31	0	22	0	9	1	0	7	0	1
55-59	05	0	0	22	0	20	0	2	0	0	2	0	0
60-64	06	0	0	9	0	8	0	1	0	0	1	0	0
65-69	07	0	0	6	0	5	0	1	0	0	1	0	0
70	08	0	0	0	0	0	0	0	0	0	0	0	0
71-74	09	0	0	2	0	2	0	0	0	0	0	0	0
>=75	10	0	0	14	0	12	0	2	0	0	2	0	0
50-70	11	0	0	104	0	87	0	17	1	0	15	0	1
All ages	12	0	0	120	0	101	0	19	1	0	17	0	1

Part E2: Assessment				Outcome of assessment up to and including cytology and diagnostic histology									
Age at 1 st offered appt	Line no.	Cancer identified without cyt/hist	Ref for cyt/core bx	Up to and including cytology/core biopsy					Up to and including open biopsy				
				No/inad result	Not referred for open biopsy			Ref for open bx	Total ref for open bx	No/inad result	Benign/normal		Cancer
					Routine recall	Early recall	Cancer				Routine recall	Early recall	
		(13)	(14)	(15)	(16)	(17)	(18)	(19)	(20)	(21)	(22)	(23)	(24)
<=44	13	0	0	0	0	0	0	0	0	0	0	0	0
45-49	14	0	0	0	0	0	0	0	0	0	0	0	0
50-52	15	0	4	0	3	0	0	1	1	0	1	0	0
53-54	16	0	3	0	1	0	1	1	1	0	1	0	0
55-59	17	0	2	0	2	0	0	0	0	0	0	0	0
60-64	18	0	0	0	0	0	0	0	0	0	0	0	0
65-69	19	0	0	0	0	0	0	0	0	0	0	0	0
70	20	0	0	0	0	0	0	0	0	0	0	0	0
71-74	21	0	0	0	0	0	0	0	0	0	0	0	0
>=75	22	0	1	0	1	0	0	0	0	0	0	0	0
50-70	23	0	9	0	6	0	1	2	2	0	2	0	0
All ages	24	0	10	0	7	0	1	2	2	0	2	0	0

South West Wales (Table E – self/GP referral of women not previously screened)

Part E3: Cancers		Cancers diagnosed by cytology/histology										
Age at 1 st offered appt	Line no.	Total no. with cancer	Invasive status unknown	Non-invasive or possibly micro-invasive	Micro-invasive	Invasive size						Total invasive
						<10mm	>=10mm & <15mm	>=15mm & <20mm	>=20mm & <50mm	>=50mm	Size unknown	
		(25)	(26)	(27)	(28)	(29)	(30)	(31)	(32)	(33)	(34)	(35)
<=44	25	0	0	0	0	0	0	0	0	0	0	0
45-49	26	0	0	0	0	0	0	0	0	0	0	0
50-52	27	0	0	0	0	0	0	0	0	0	0	0
53-54	28	1	0	1	0	0	0	0	0	0	0	0
55-59	29	0	0	0	0	0	0	0	0	0	0	0
60-64	30	0	0	0	0	0	0	0	0	0	0	0
65-69	31	0	0	0	0	0	0	0	0	0	0	0
70	32	0	0	0	0	0	0	0	0	0	0	0
71-74	33	0	0	0	0	0	0	0	0	0	0	0
>=75	34	0	0	0	0	0	0	0	0	0	0	0
50-70	35	1	0	1	0	0	0	0	0	0	0	0
All ages	36	1	0	1	0	0	0	0	0	0	0	0

South West Wales (Table F1 – self/GP referrals of women previously screened, last screen within 5 years)

Part F1-1: Invitations & outcomes					Outcome of initial screen				Final outcome of assessment				
Age at 1 st offered appt	Line no.	No. of women invited	Lost to follow up after tech inad scr mammo	No. screened tech ad	Not known	Routine recall	Early recall	Referred for assmt	Failed to attend for assmt	Outcome of assmt not known	Routine recall	Early recall	Cancer
		(1)	(2)	(3)	(4)	(5)	(6)	(7)	(8)	(9)	(10)	(11)	(12)
<=44	01	0	0	0	0	0	0	0	0	0	0	0	0
45-49	02	0	0	0	0	0	0	0	0	0	0	0	0
50-52	03	0	0	10	0	10	0	0	0	0	0	0	0
53-54	04	0	0	31	0	28	0	3	0	0	2	0	1
55-59	05	0	0	79	0	75	0	4	0	0	4	0	0
60-64	06	0	0	40	0	38	0	2	0	0	1	0	1
65-69	07	0	1	34	0	30	0	4	0	0	3	0	1
70	08	0	0	52	0	50	0	2	0	0	2	0	0
71-74	09	0	1	408	0	395	0	13	0	0	8	0	5
>=75	10	0	1	326	0	312	0	14	0	0	10	0	4
50-70	11	0	1	246	0	231	0	15	0	0	12	0	3
All ages	12	0	3	980	0	938	0	42	0	0	30	0	12

Part F1-2: Assessment				Outcome of assessment up to and including cytology and diagnostic histology									
Age at 1 st offered appt	Line no.	Cancer identified without cyt/hist	Ref for cyt/core bx	Up to and including cytology/core biopsy					Up to and including open biopsy				
				Not referred for open biopsy				Ref for open bx	Total ref for open bx	No/inad result	Benign/normal		Cancer
				No/inad result	Routine recall	Early recall	Cancer				Routine recall	Early recall	
		(13)	(14)	(15)	(16)	(17)	(18)	(19)	(20)	(21)	(22)	(23)	(24)
<=44	13	0	0	0	0	0	0	0	0	0	0	0	0
45-49	14	0	0	0	0	0	0	0	0	0	0	0	0
50-52	15	0	0	0	0	0	0	0	0	0	0	0	0
53-54	16	0	1	0	0	0	1	0	0	0	0	0	0
55-59	17	0	2	0	1	0	0	1	1	0	1	0	0
60-64	18	0	2	0	1	0	1	0	0	0	0	0	0
65-69	19	0	2	0	1	0	1	0	0	0	0	0	0
70	20	0	0	0	0	0	0	0	0	0	0	0	0
71-74	21	0	6	0	1	0	4	1	1	0	0	0	1
>=75	22	0	7	0	3	0	4	0	0	0	0	0	0
50-70	23	0	7	0	3	0	3	1	1	0	1	0	0
All ages	24	0	20	0	7	0	11	2	2	0	1	0	1

South West Wales (Table F1 – self/GP referrals of women previously screened, last screen within 5 years)

Part F1-3: Cancers		Cancers diagnosed by cytology/histology										
Age at 1 st offered appt	Line no.	Total no. with cancer	Invasive status unknown	Non-invasive or possibly micro-invasive	Micro-invasive	Invasive size					Size unknown	Total invasive
						<10mm	>=10mm & <15mm	>=15mm & <20mm	>=20mm & <50mm	>=50mm		
		(25)	(26)	(27)	(28)	(29)	(30)	(31)	(32)	(33)	(34)	(35)
<=44	25	0	0	0	0	0	0	0	0	0	0	0
45-49	26	0	0	0	0	0	0	0	0	0	0	0
50-52	27	0	0	0	0	0	0	0	0	0	0	0
53-54	28	1	0	0	0	1	0	0	0	0	0	1
55-59	29	0	0	0	0	0	0	0	0	0	0	0
60-64	30	1	0	0	0	1	0	0	0	0	0	1
65-69	31	1	0	0	0	0	1	0	0	0	0	1
70	32	0	0	0	0	0	0	0	0	0	0	0
71-74	33	5	0	0	0	2	0	1	2	0	0	5
>=75	34	4	0	2	0	0	0	1	1	0	0	2
50-70	35	3	0	0	0	2	1	0	0	0	0	3
All ages	36	12	0	2	0	4	1	2	3	0	0	10

South West Wales (Table F2 – self/GP referrals of women previously screened, last screen more than 5 years prev)

Part F2-1: Invitations & outcomes					Outcome of initial screen				Final outcome of assessment				
Age at 1 st offered appt	Line no.	No. of women invited	Lost to follow up after tech inad scr mammo	No. screened tech ad	Not known	Routine recall	Early recall	Referred for assmt	Failed to attend for assmt	Outcome of assmt not known	Routine recall	Early recall	Cancer
		(1)	(2)	(3)	(4)	(5)	(6)	(7)	(8)	(9)	(10)	(11)	(12)
<=44	01	0	0	0	0	0	0	0	0	0	0	0	0
45-49	02	0	0	0	0	0	0	0	0	0	0	0	0
50-52	03	0	0	0	0	0	0	0	0	0	0	0	0
53-54	04	0	0	1	0	1	0	0	0	0	0	0	0
55-59	05	0	0	5	0	5	0	0	0	0	0	0	0
60-64	06	0	0	17	0	17	0	0	0	0	0	0	0
65-69	07	0	0	13	0	13	0	0	0	0	0	0	0
70	08	0	0	4	0	3	0	1	0	0	1	0	0
71-74	09	0	0	42	0	41	0	1	0	0	0	0	1
>=75	10	0	1	115	0	106	0	9	0	0	4	0	5
50-70	11	0	0	40	0	39	0	1	0	0	1	0	0
All ages	12	0	1	197	0	186	0	11	0	0	5	0	6

Part F2-2: Assessment			Outcome of assessment up to and including cytology and diagnostic histology										
Age at 1 st offered appt	Line no.	Cancer identified without cyt/hist	Up to and including cytology/core biopsy						Up to and including open biopsy				
			Ref for cyt/core bx	Not referred for open biopsy				Ref for open bx	Total ref for open bx	No/inad result	Benign/normal		Cancer
				No/inad result	Routine recall	Early recall	Cancer				Routine recall	Early recall	
		(13)	(14)	(15)	(16)	(17)	(18)	(19)	(20)	(21)	(22)	(23)	(24)
<=44	13	0	0	0	0	0	0	0	0	0	0	0	0
45-49	14	0	0	0	0	0	0	0	0	0	0	0	0
50-52	15	0	0	0	0	0	0	0	0	0	0	0	0
53-54	16	0	0	0	0	0	0	0	0	0	0	0	0
55-59	17	0	0	0	0	0	0	0	0	0	0	0	0
60-64	18	0	0	0	0	0	0	0	0	0	0	0	0
65-69	19	0	0	0	0	0	0	0	0	0	0	0	0
70	20	0	0	0	0	0	0	0	0	0	0	0	0
71-74	21	0	1	0	0	0	1	0	0	0	0	0	0
>=75	22	0	6	0	1	0	5	0	0	0	0	0	0
50-70	23	0	0	0	0	0	0	0	0	0	0	0	0
All ages	24	0	7	0	1	0	6	0	0	0	0	0	0

South West Wales (Table F2 – self/GP referrals of women previously screened, last screen more than 5 years prev)

Part F2-3: Cancers		Cancers diagnosed by cytology/histology										
Age at 1 st offered appt	Line no.	Total no. with cancer	Invasive status unknown	Non-invasive or possibly micro-invasive	Micro-invasive	Invasive size					Size unknown	Total invasive
						<10mm	>=10mm & <15mm	>=15mm & <20mm	>=20mm & <50mm	>=50mm		
		(25)	(26)	(27)	(28)	(29)	(30)	(31)	(32)	(33)	(34)	(35)
<=44	25	0	0	0	0	0	0	0	0	0	0	0
45-49	26	0	0	0	0	0	0	0	0	0	0	0
50-52	27	0	0	0	0	0	0	0	0	0	0	0
53-54	28	0	0	0	0	0	0	0	0	0	0	0
55-59	29	0	0	0	0	0	0	0	0	0	0	0
60-64	30	0	0	0	0	0	0	0	0	0	0	0
65-69	31	0	0	0	0	0	0	0	0	0	0	0
70	32	0	0	0	0	0	0	0	0	0	0	0
71-74	33	1	0	0	0	0	0	0	1	0	0	1
>=75	34	5	0	1	0	0	2	1	0	0	1	4
50-70	35	0	0	0	0	0	0	0	0	0	0	0
All ages	36	6	0	1	0	0	2	1	1	0	1	5