

Measuring inequalities

Trends in mortality and life expectancy in Powys

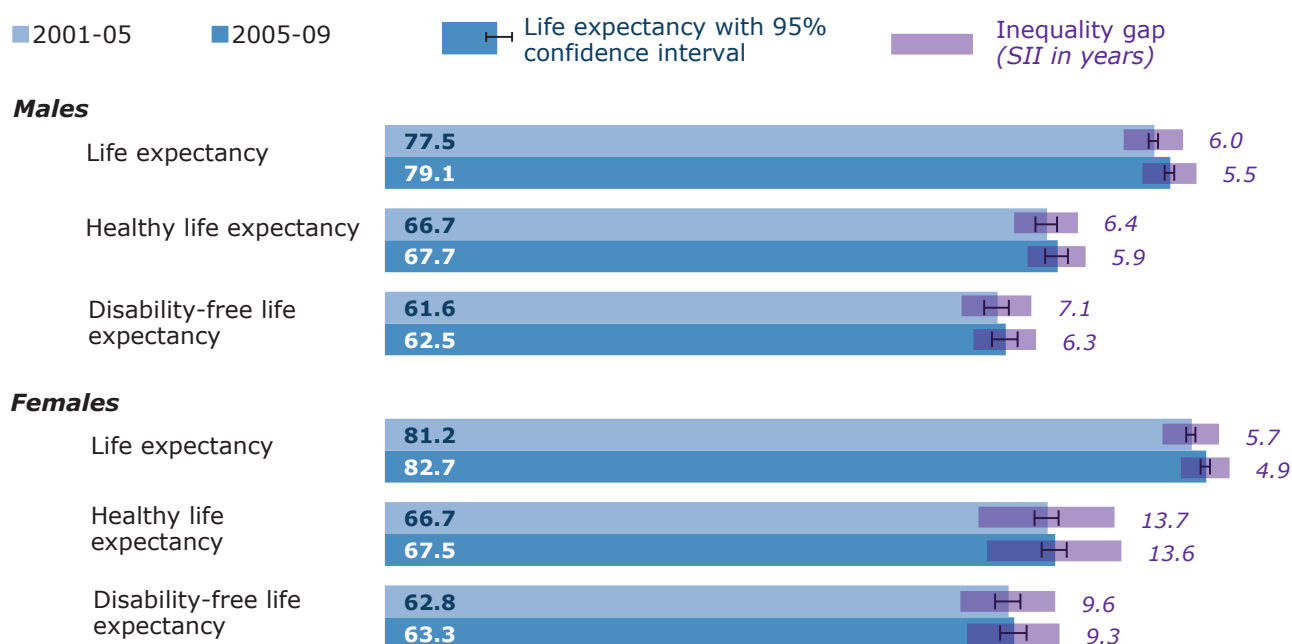


This is one of 22 profiles produced for each local authority in Wales comparing outcomes and their trends in the most and least deprived areas in the local authority. A Wales profile has also been produced and contains more detailed analysis and background information.

Life expectancy in Powys, as in Wales in general, is increasing. However, this improvement is not experienced equally across all areas. There are in many cases substantial national and local inequality gaps between the most and least deprived areas in both life expectancy and deaths from different causes. There are also inequalities in the quality of life in terms of healthy life expectancy and disability-free life expectancy.

The Slope Index of Inequality (SII) measures the absolute gap in years of life expectancy between the most and least deprived, taking into account the pattern across all fifths of deprivation within the Local Authority. The SII shows, for example, that the gap in life expectancy in males between the most and least deprived fifth is about 6 years. When considering healthy life expectancy the gap is similar at around 6 years.

Comparison of life expectancy, healthy life expectancy and disability-free life expectancy at birth, Powys 2001-05 and 2005-09



GIG
CYMRU
NHS
WALES

Arsyllfa Iechyd
Cyhoeddus Cymru
Public Health
Wales Observatory

Mortality by cause of death

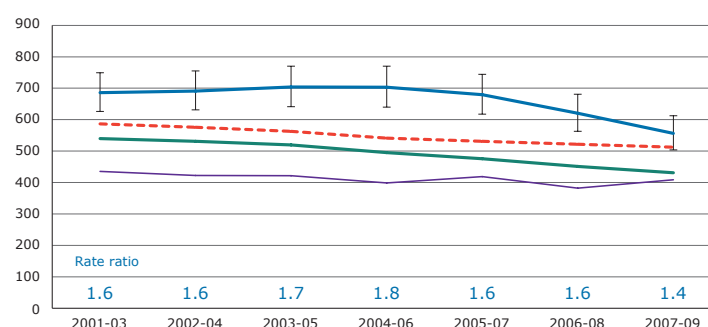
Death rates for all and specific major causes are compared between the most and least deprived using a rate ratio, thereby measuring the relative gap. The following charts show the rates for the fifths, the local authority overall and Wales. A rate ratio of two, for example, means that the rate in the most deprived fifth is twice the rate in the least deprived fifth.

European age-standardised rate (EASR) per 100,000 population

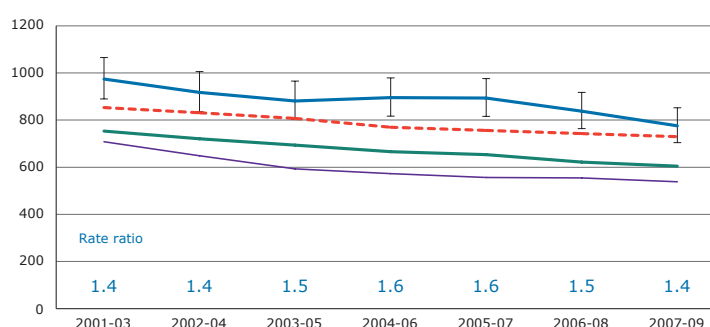
— Most deprived within Powys (95% CI) - - - Wales EASR — Least deprived within Powys — Powys overall

All-cause mortality, all ages

Females

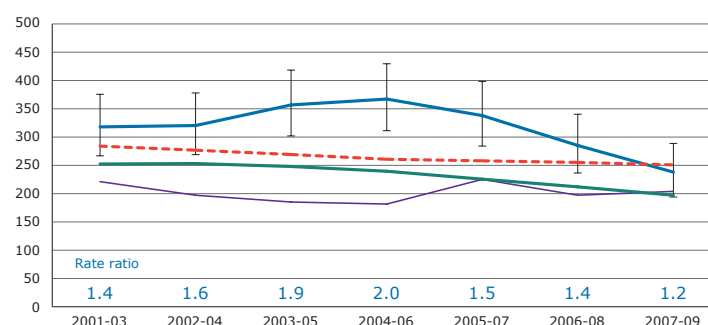


Males

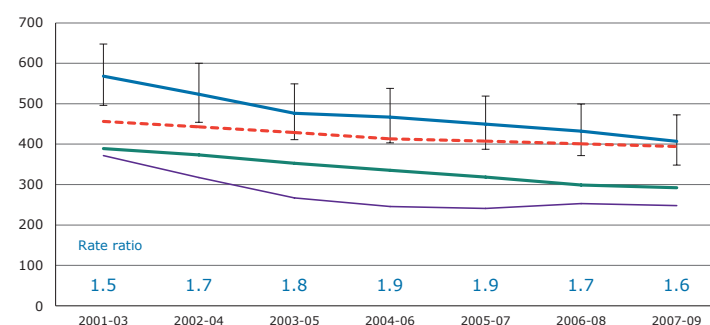


All-cause mortality under 75

Females

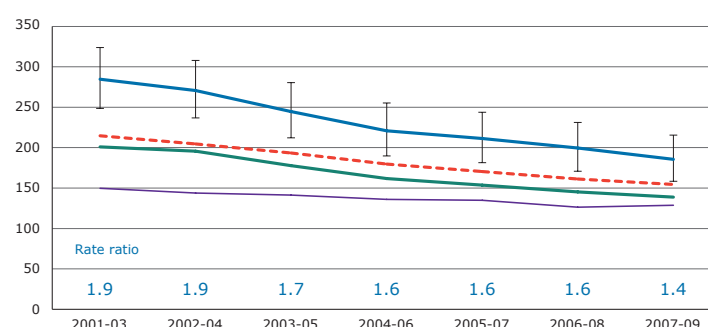


Males

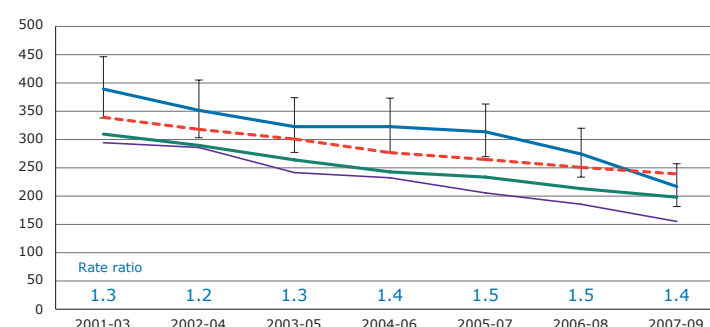


Mortality from circulatory disease

Females



Males



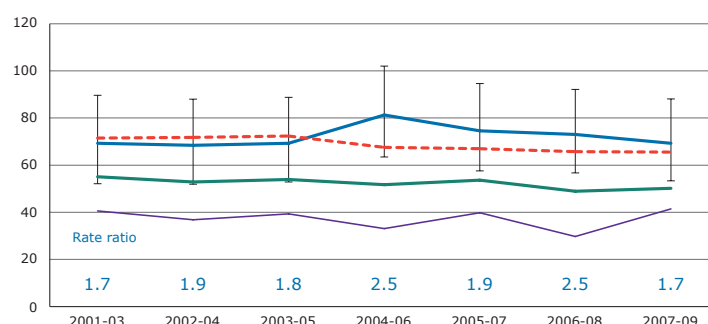
Mortality by cause of death (continued)

European age-standardised rate (EASR) per 100,000 population

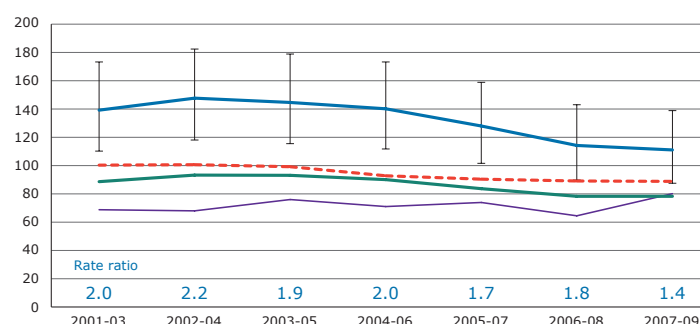
— Most deprived within Powys (95% CI) - - - Wales EASR — Least deprived within Powys — Powys overall

Mortality from respiratory disease

Females

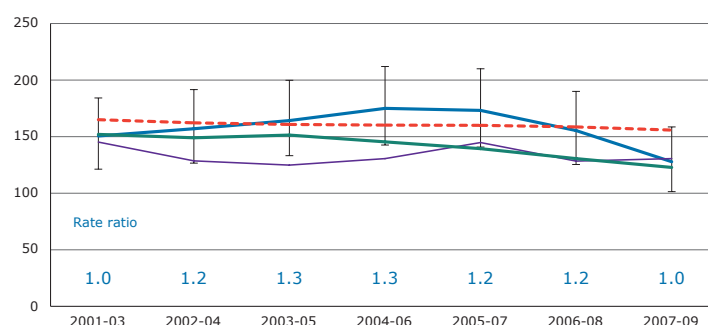


Males

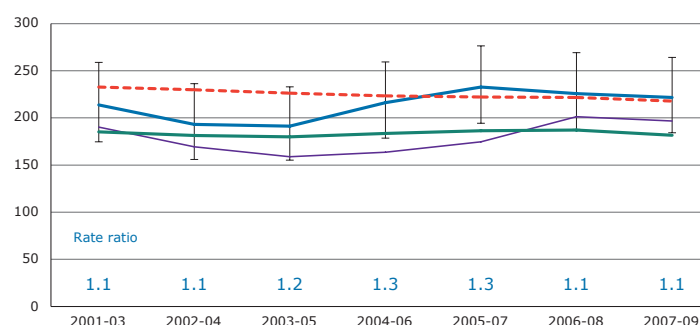


Mortality from cancer

Females

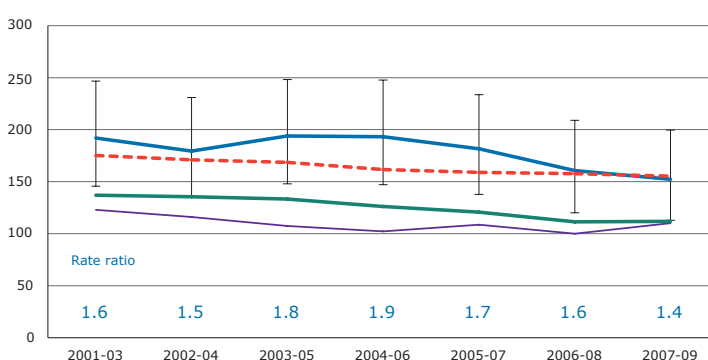


Males

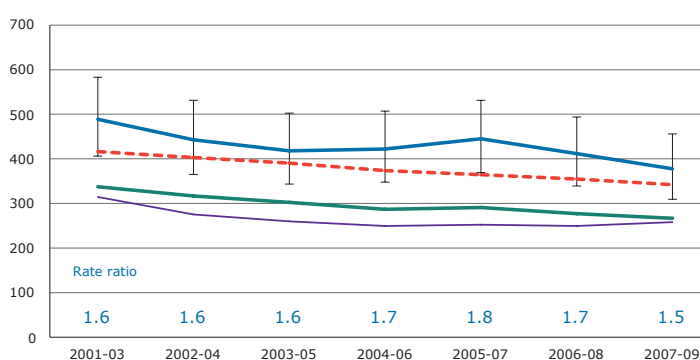


Smoking-attributable mortality aged 35 and over

Females



Males



Notes and contact:

This publication consists of individual profiles for each of the 22 local authorities, a more detailed Wales profile, selected data files and a technical guide to support the profiles. These are all available on our website at www.publichealthwalesobservatory.wales.nhs.uk/inequalities. For further details please contact us on publichealthwalesobservatory@wales.nhs.uk. All analyses, charts and the map have been produced by the Public Health Wales Observatory using the following data sources: Annual District Death Extract and Mid-Year Population Estimates (Office for National Statistics), Welsh Index of Multiple Deprivation and Welsh Health Survey (Welsh Government).

© 2011 Public Health Wales Observatory

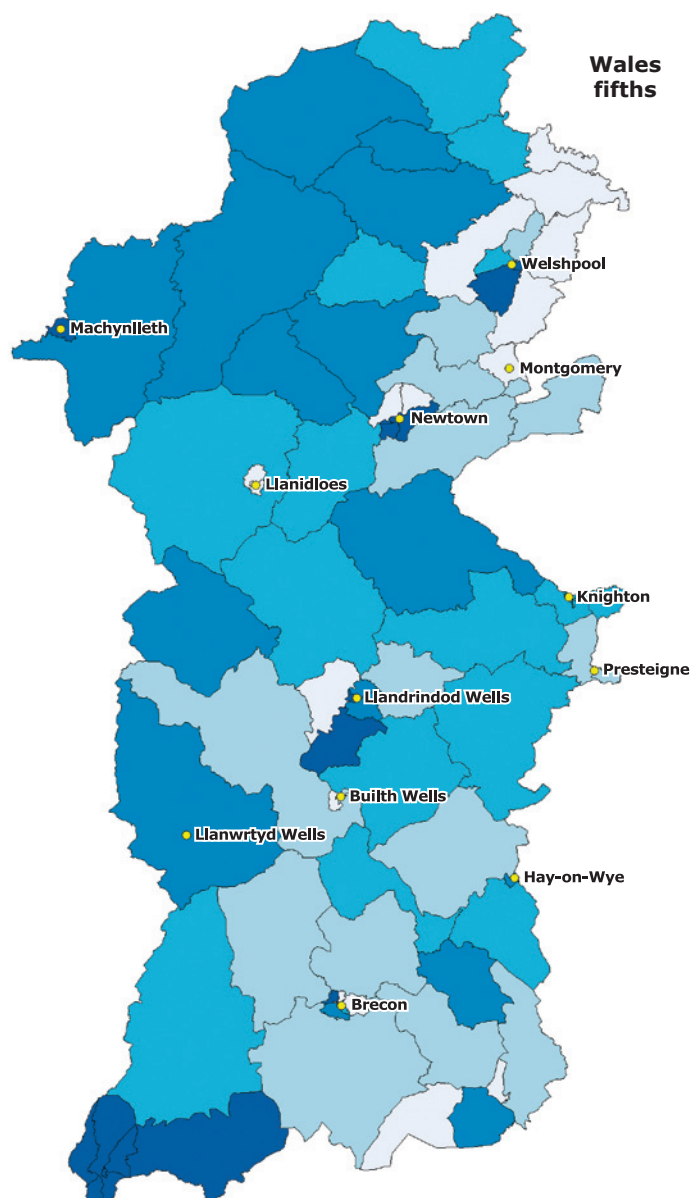
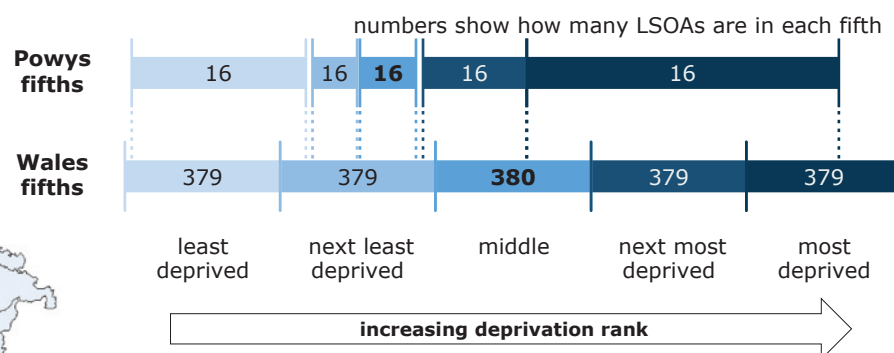
Deprivation fifths

Deprivation fifths for each local authority were produced by ranking all Lower Super Output areas (LSOAs) *within* the local authority and grouping them into fifths, based on the Welsh Index of Multiple Deprivation (WIMD). The relationship between local and national fifths is illustrated in the chart. The position of each local authority fifth shows the range of ranks it contains relative to the Wales fifths.

Overall, it shows that LSOAs in Powys are concentrated towards the middle and least deprived end of the national deprivation scale. The 16 LSOAs in the most deprived local authority cover a very broad range including some from the most, next most and middle national fifths. The gap between the most and least deprived fifths *within* Powys in this analysis is narrower than for Wales as a whole.

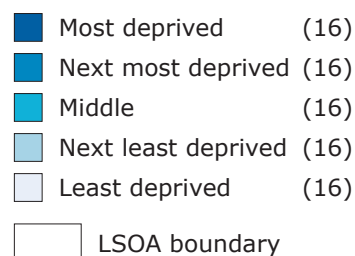
Further details on deprivation fifths can be found in the technical guide.

Range of deprivation within local authority fifths on a scale relative to Wales fifths



Local authority fifths of deprivation

Lower Super Output Area



© Crown Copyright and database right 2011
Ordnance Survey 100044810