



Demography 2016

Abertawe Bro
Morgannwg UHB
summary



GIG
CYMRU
NHS
WALES

Arsyllfa Iechyd
Cyhoeddus Cymru
Public Health
Wales Observatory

The publication *Demography 2016* consists of:

- Wales summary document and key messages
- Seven health board summary documents
- Four interactive data files showing the main indicators and key messages
- Three map interactive files
- Infographics of selected key messages
- Technical guides describing the indicators, data sources and caveats

These resources are available at

<https://phw.nhs.wales/services-and-teams/observatory/data-and-analysis/demography-2016/>

For further information, or to provide feedback on *Demography 2016*, please contact us:

Public Health Wales Observatory
14 Cathedral Road
Cardiff
CF11 9LJ

email: publichealthwalesobservatory@wales.nhs.uk

web: www.publichealthwalesobservatory.wales.nhs.uk

Main project team

Ioan Francis, Rhian Hughes, Grace Jefferies, Victoria Middleton

Additional support

James Allen, Anna Childs, Andrew Dring, Dee Hickey, Leon May, Rhys Powell

Project director

Nathan Lester

Acknowledgements

Thanks to the following people for their help with this publication:

Hugo Cosh, Andrea Gartner, Rhys Gibbon, Tracy Price

© 2016 Public Health Wales NHS Trust

All tables, charts and maps were produced by the Public Health Wales Observatory and the data sources are shown within each graphic. Material contained in this profile may be reproduced without prior permission provided it is done so accurately and is not used in a misleading context. Acknowledgement to Public Health Wales NHS Trust to be stated. Typographical copyright lies with Public Health Wales NHS Trust.

Contents

How to copy charts and maps

1	Introduction	3
2	Population estimates	4
2.1	Population trends	4
2.2	Population trends by age	4
2.3	Population pyramid 2005 and 2014 comparison	5
2.4	Population pyramid 2014 comparison	5
2.5	Population estimates by Lower Super Output Area	6
3	Population projections	10
3.1	Projection trends by age	10
3.2	Past trends and projections	10
4	Mortality	11
4.1	All-cause mortality trends	11
4.2	All-cause mortality 2012-14	12
4.3	All-cause mortality by Middle Super Output Area	14
5	General fertility rate	15
5.1	General fertility rate trends	15
5.2	General fertility rate 2014	16
5.3	General fertility rate by Lower Super Output Area	17

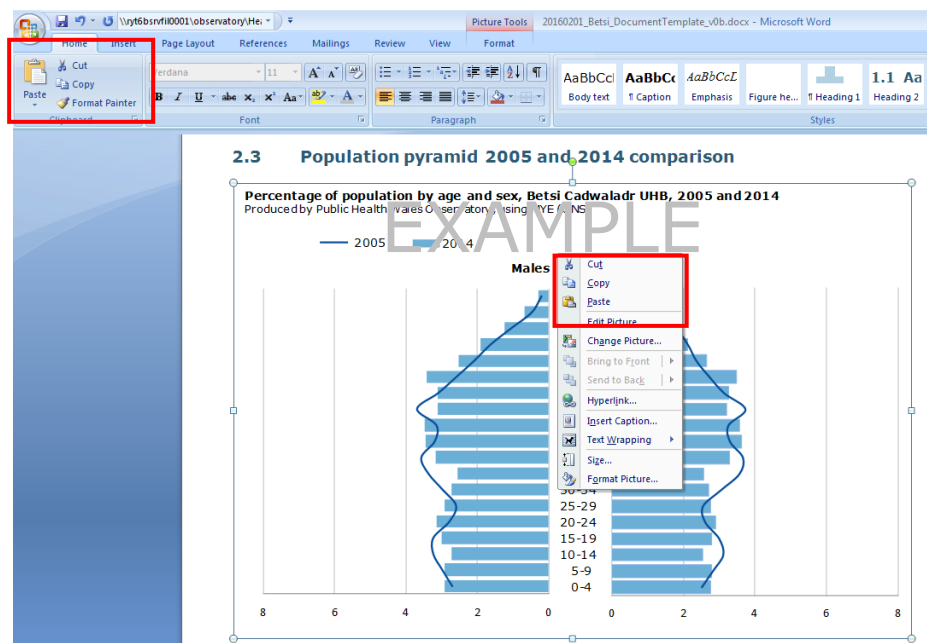
How to copy charts and maps into other documents

The standard {Cut}, {Copy} and {Paste} options can be used in Microsoft Word to export tables, charts and maps to other documents. Images can also be resized as required.

Copying and pasting charts and maps (Figure 1)

1. Select the image you want to copy by left clicking on it once so that the surrounding points are displayed.
2. Either on the 'Home' tab or through the right click menu select either 'Cut' or 'Copy'.
3. In the document where you want to insert the image, select 'Paste' either through the 'Home' tab or the right-click menu.

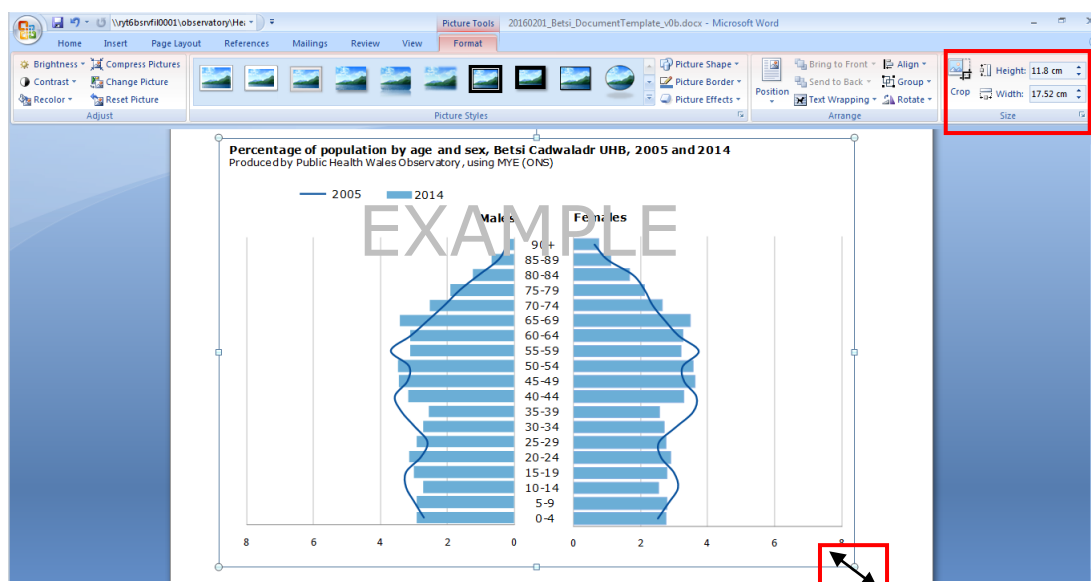
Figure 1



Resizing images (Figure 2)

1. To adjust the size, left-click the image once so that the surrounding points are displayed.
2. You can either adjust the length and width manually through the 'Format' tab or use the points to resize the image by clicking and dragging.
3. When resizing an image it is best to use the corner points dragging method, as this will retain the proportions of the original image. Re-sizing just horizontally or vertically leads to distortion of the perspective and a reduction in image quality.

Figure 2



1 Introduction

This health board summary document provides local level information on the indicators contained in the publication *Demography 2016*. It includes *selected* charts and small area maps for the health board area and is designed to complement the Wales profile summary document.

The publication *Demography 2016* consists of:

- A Wales summary document and key messages
- Seven health board summary documents
- Four interactive data files showing the main indicators and key messages
- Three map interactive files
- Infographics of selected key messages
- Technical guides describing the indicators, data sources and caveats

These resources are available at <https://phw.nhs.wales/services-and-teams/observatory/data-and-analysis/demography-2016/>

Note:

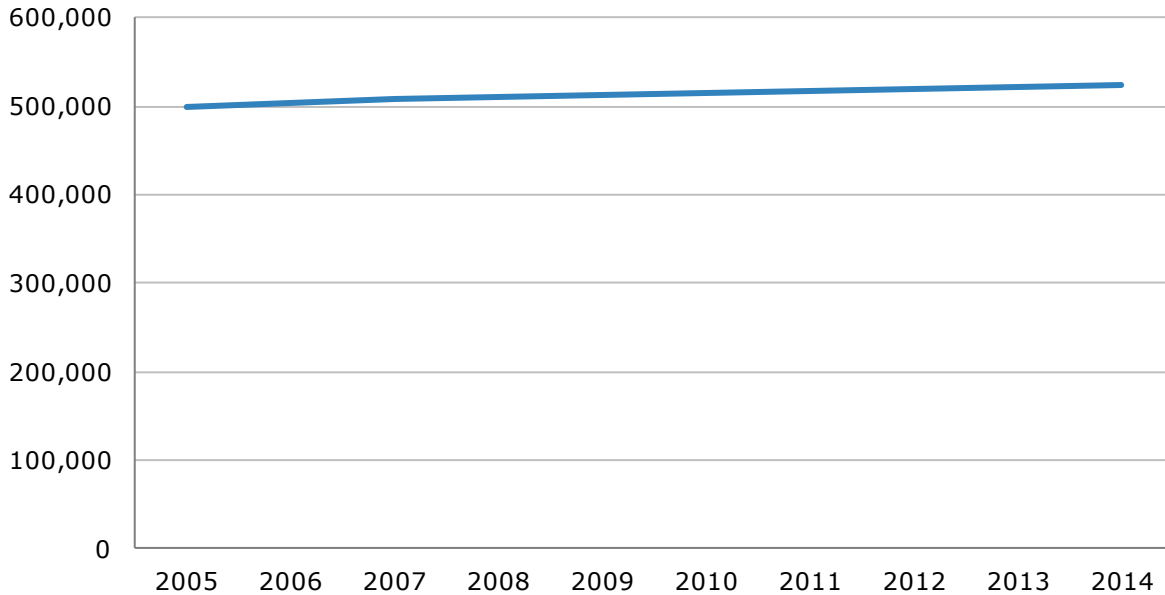
It has recently come to light that the population aged 85+ has been underestimated in some areas by the Office for National Statistics population estimates. In most parts of Wales the impact of this issue will be small. Further details are available from the Demography 2016 [webpage](#)

2 Population estimates

2.1 Population trends

Population estimates, count, persons, ABM UHB, 2005-2014

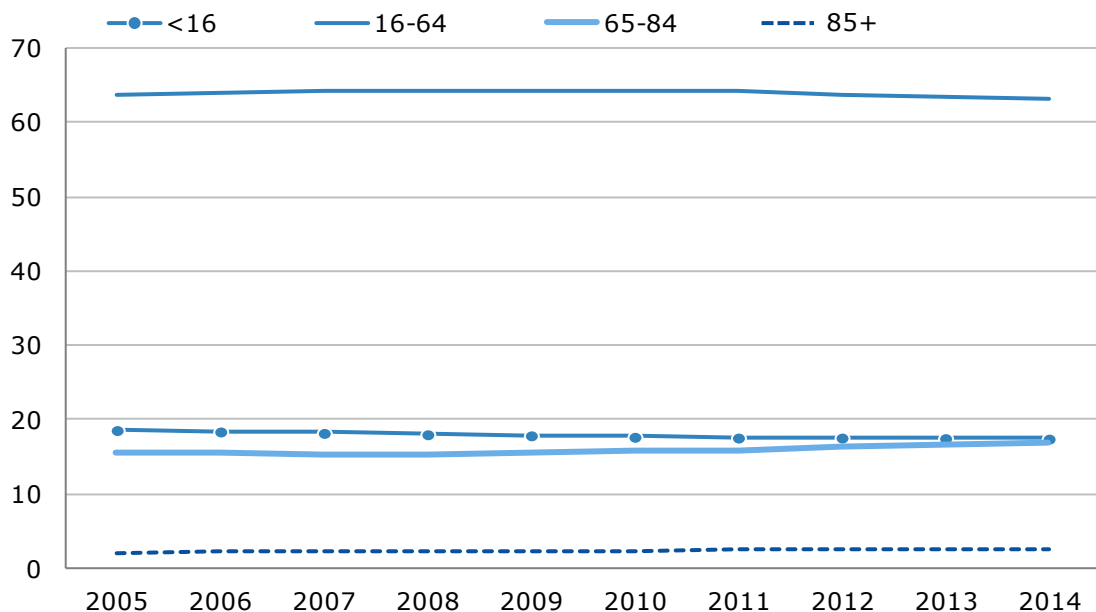
Produced by Public Health Wales Observatory, using MYE (ONS)



2.2 Population trends by age

Population estimates by age group, percentage, persons, ABM UHB, 2005-2014

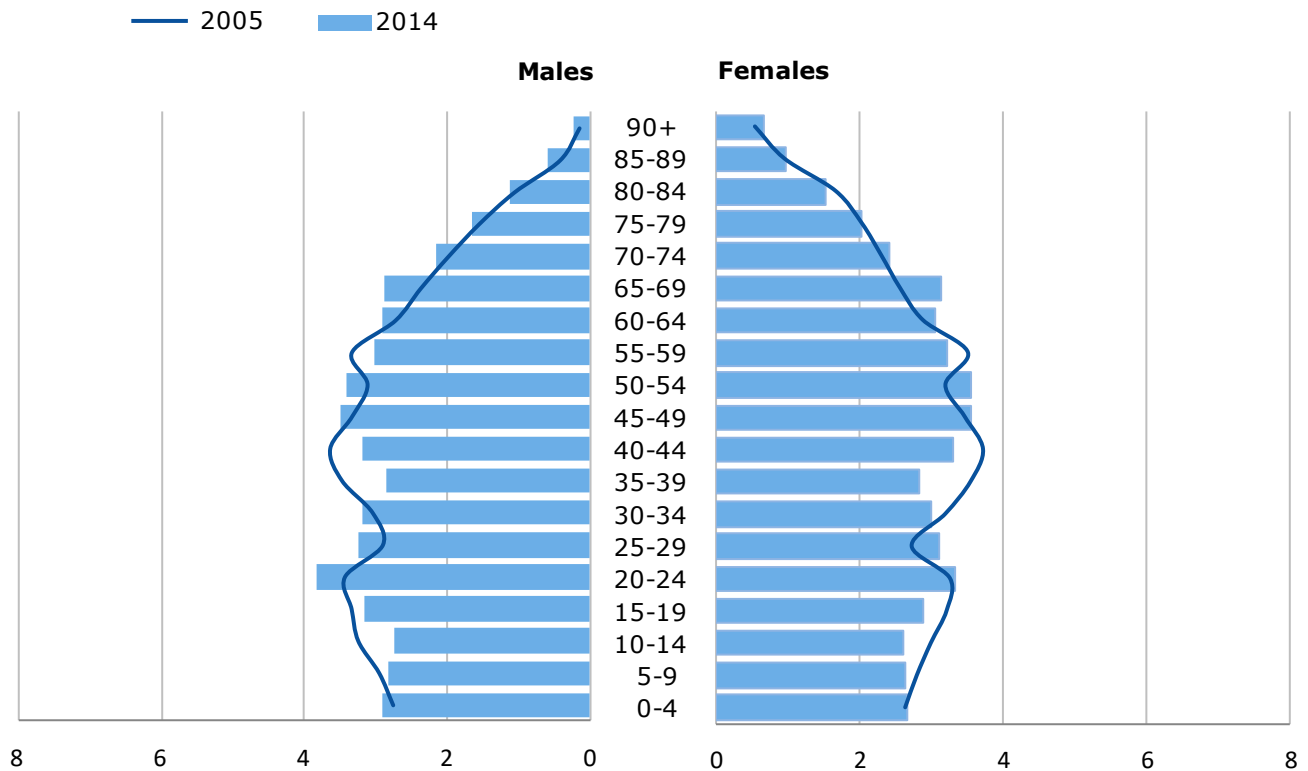
Produced by Public Health Wales Observatory, using MYE (ONS)



2.3 Population pyramid 2005 and 2014 comparison

Percentage of population by age and sex, ABM UHB, 2005 and 2014

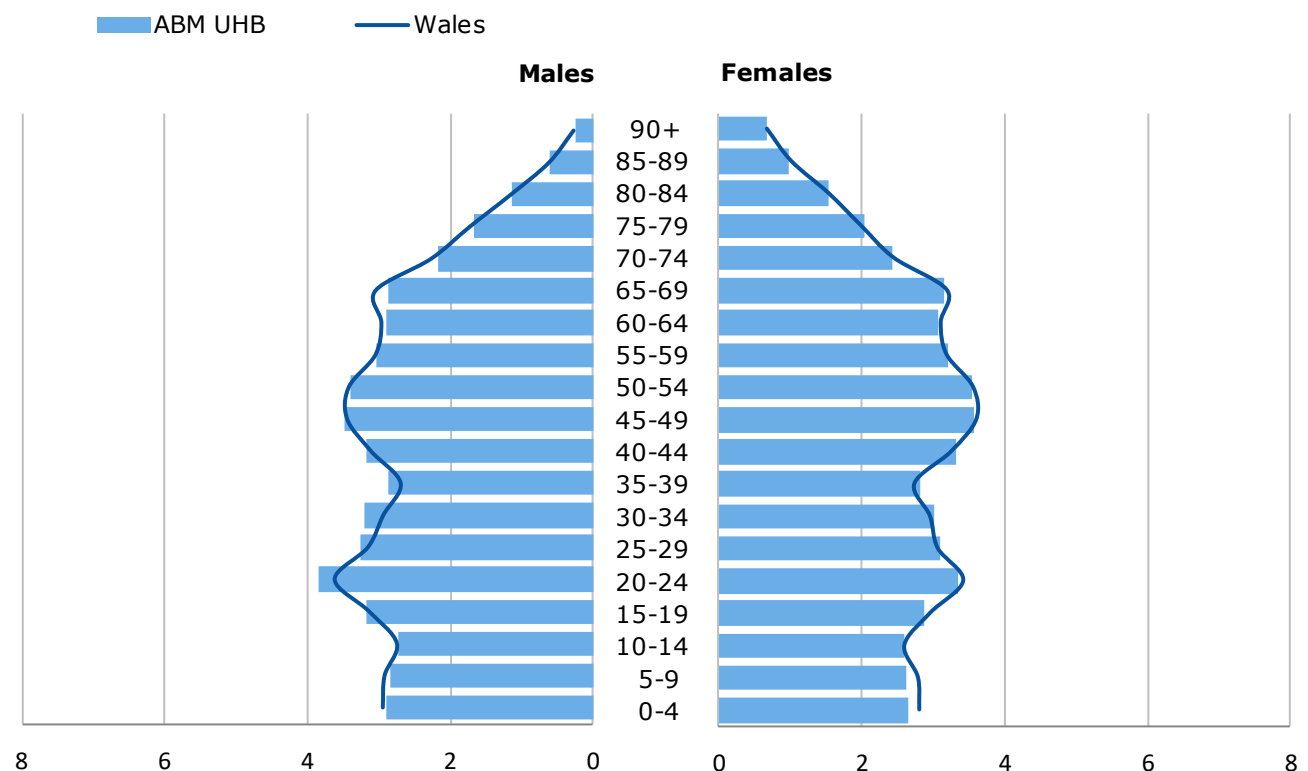
Produced by Public Health Wales Observatory, using MYE (ONS)



2.4 Population pyramid 2014 comparison

Percentage of population by age and sex, ABM UHB and Wales, 2014

Produced by Public Health Wales Observatory, using MYE (ONS)



2.5 Population estimates by Lower Super Output Area

Under 16

Estimated population aged under 16, ABM UHB, 2014

LSOA, percentage

28.2 to 35.0 [5]

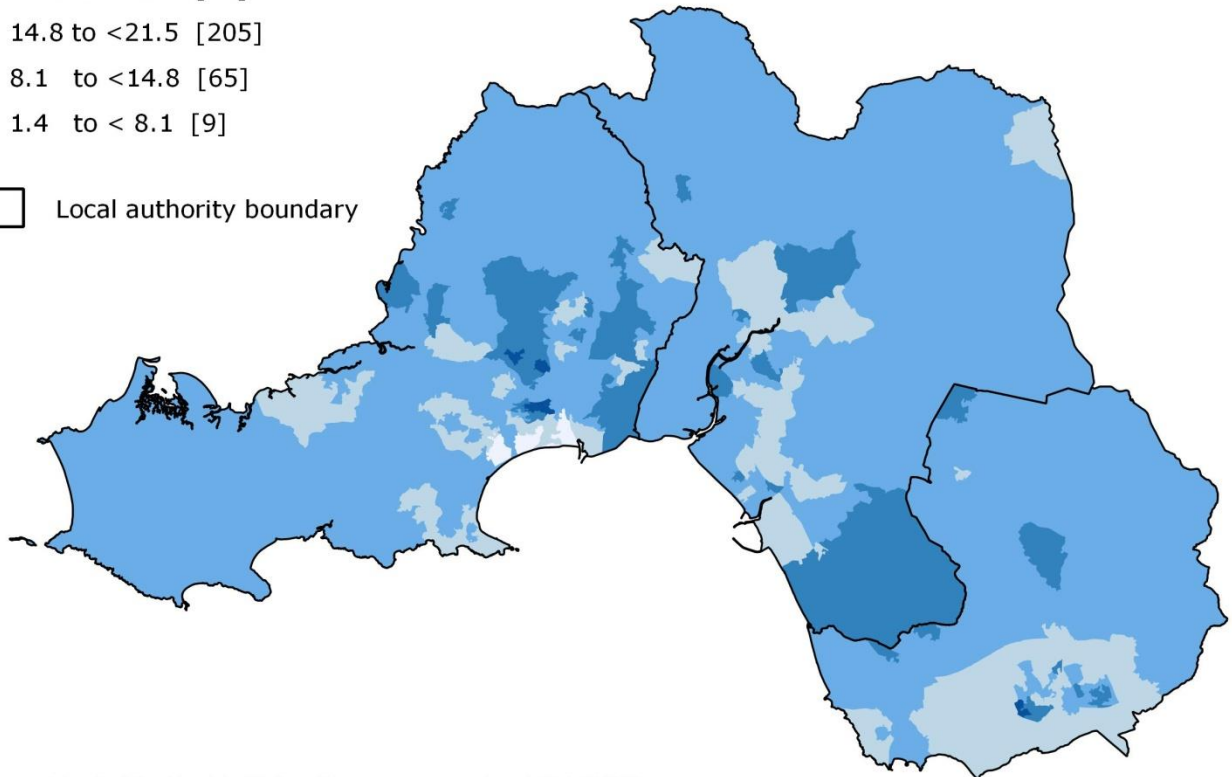
21.5 to <28.2 [43]

14.8 to <21.5 [205]

8.1 to <14.8 [65]

1.4 to <8.1 [9]

Local authority boundary

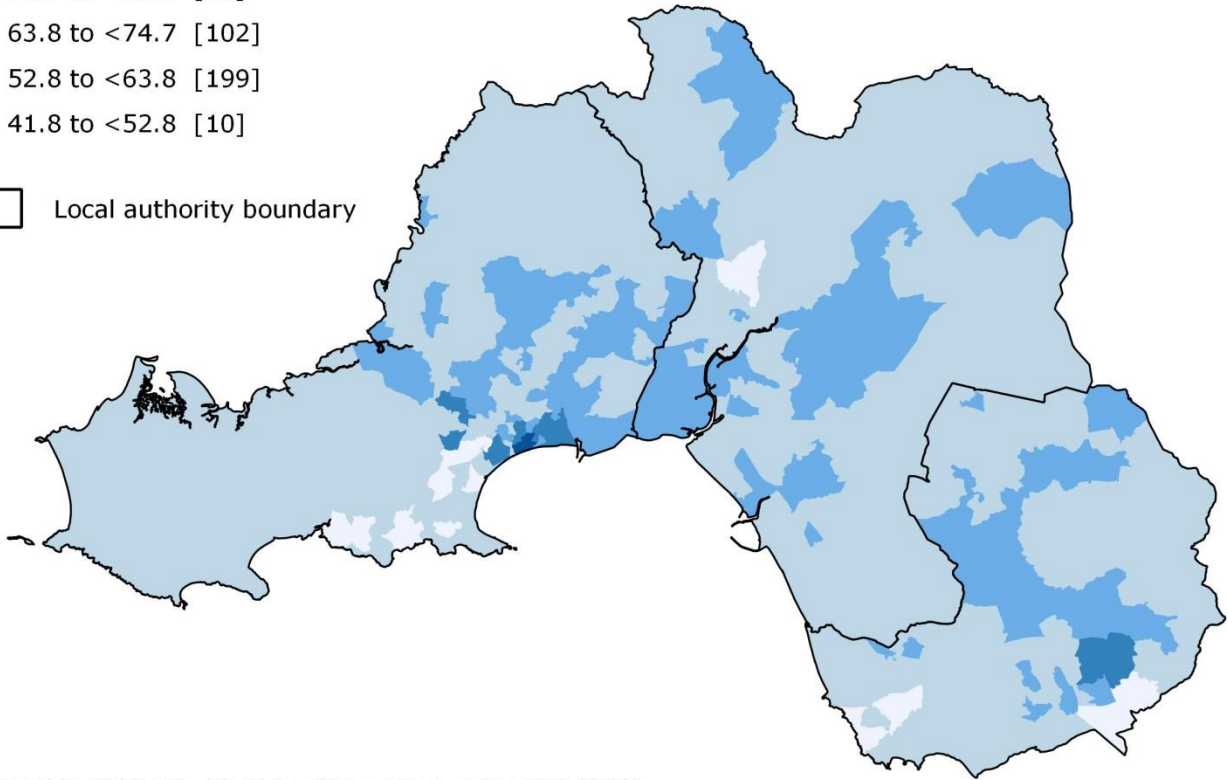
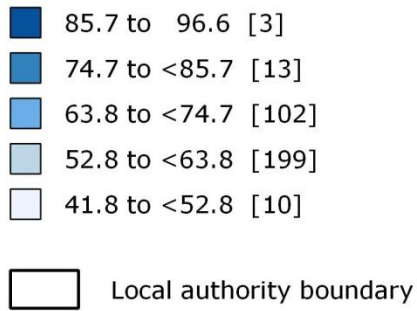


Produced by Public Health Wales Observatory, using MYE (ONS)
© Crown Copyright and database right 2016, Ordnance Survey 100044810

16 - 64 years

Estimated population aged 16 - 64 years, ABM UHB, 2014

LSOA, percentage

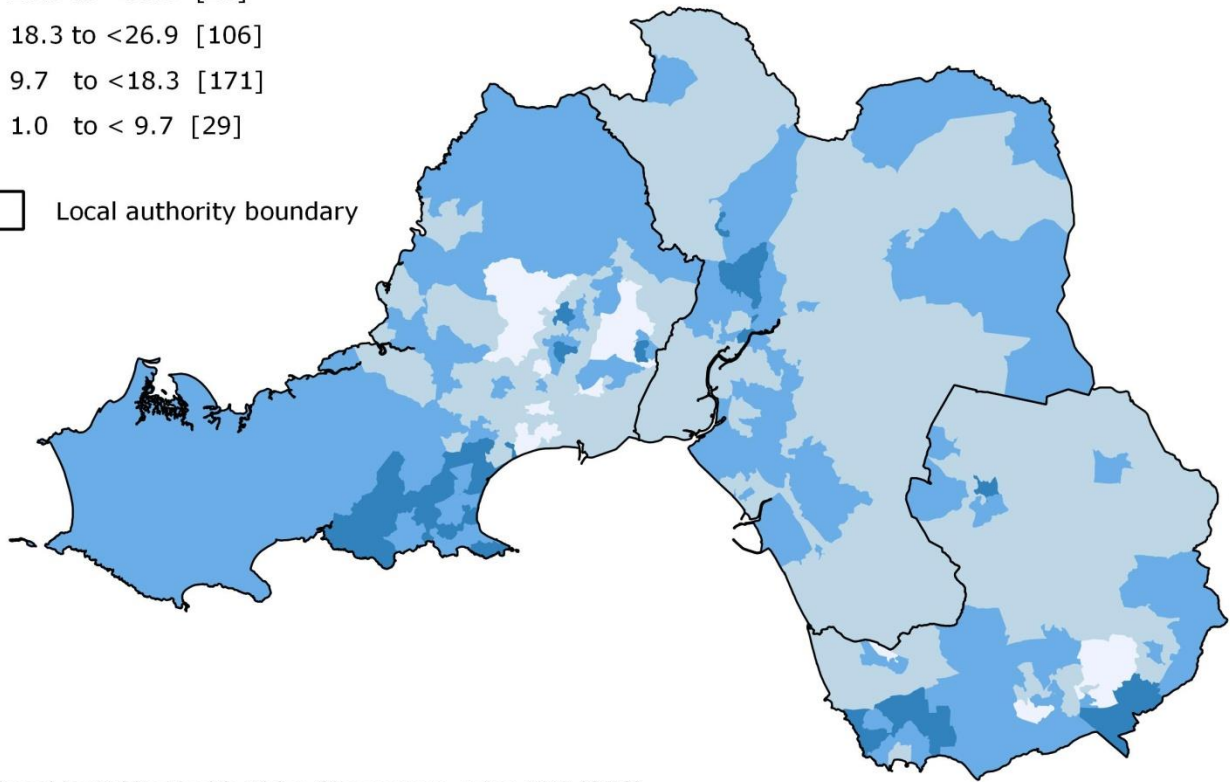
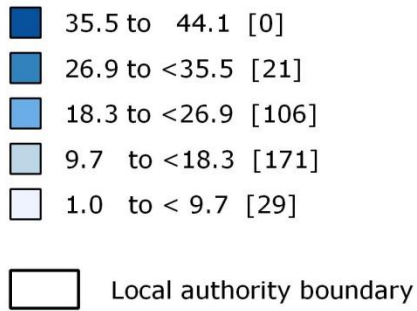


Produced by Public Health Wales Observatory, using MYE (ONS)
 © Crown Copyright and database right 2016, Ordnance Survey 100044810

65 – 84 years

Estimated population aged 65 – 84 years, ABM UHB, 2014

LSOA, percentage

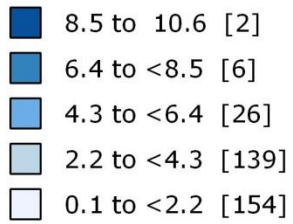


Produced by Public Health Wales Observatory, using MYE (ONS)
 © Crown Copyright and database right 2016, Ordnance Survey 100044810

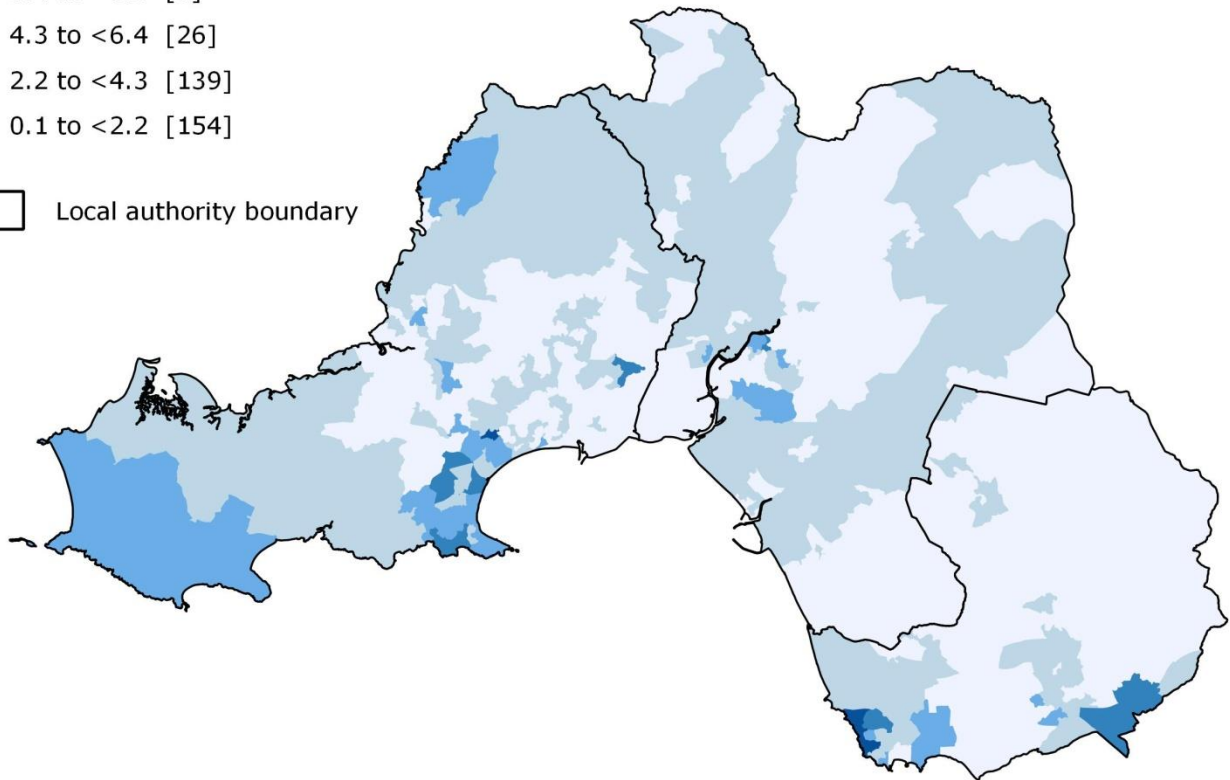
85+ years

Estimated population aged 85+, ABM UHB, 2014

LSOA, percentage



 Local authority boundary



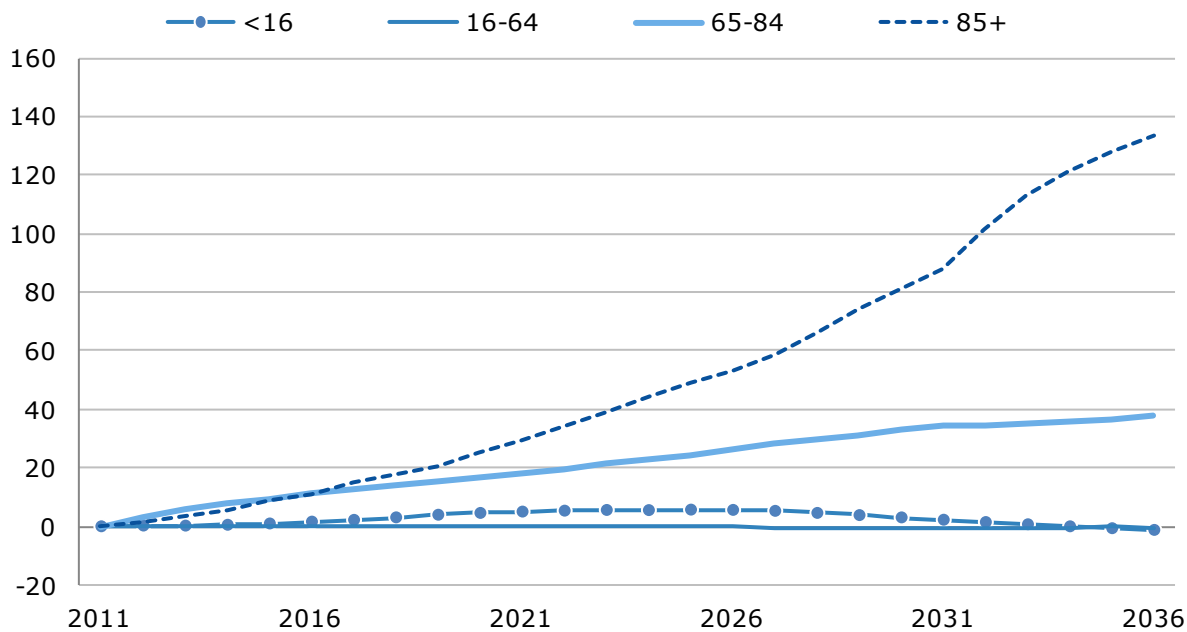
Produced by Public Health Wales Observatory, using MYE (ONS)
© Crown Copyright and database right 2016, Ordnance Survey 100044810

3 Population projections

3.1 Projection trends by age

Population projections by age group, percentage change since 2011, ABM UHB, 2011 - 2036

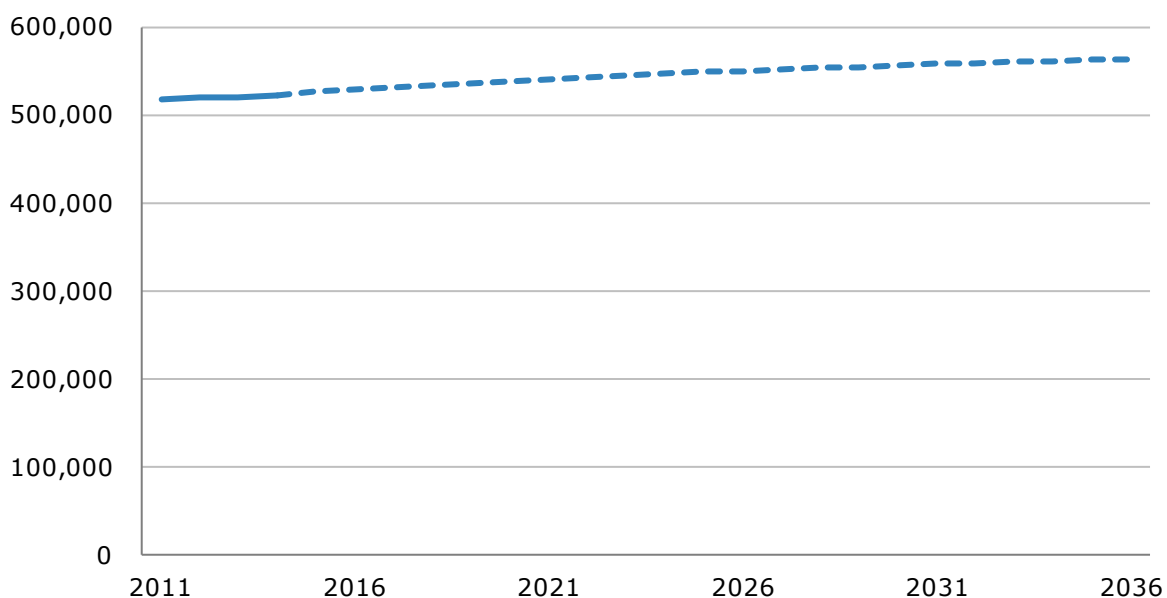
Produced by Public Health Wales Observatory, using 2011-based population projections (WG)



3.2 Past trends and projections

Population estimates and projections*, count, ABM UHB, 2011 to 2036

Produced by Public Health Wales Observatory, using MYE (ONS) & 2011-based population projections (WG)



*Data from 2011 to 2014 are based on mid-year population estimates (—); data for 2015 to 2036 are based on population projections (---)

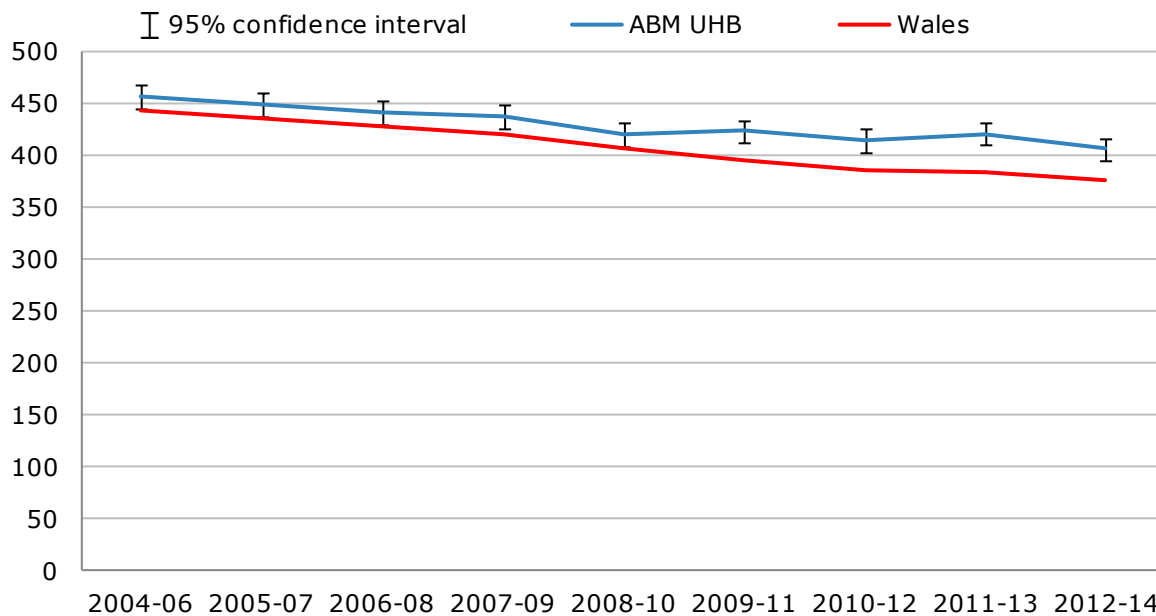
4 Mortality

4.1 All-cause mortality trends

Under 75

All-cause mortality, European age-standardised rate per 100,000, persons, under 75, ABM UHB and Wales, 2004-06 to 2012-14

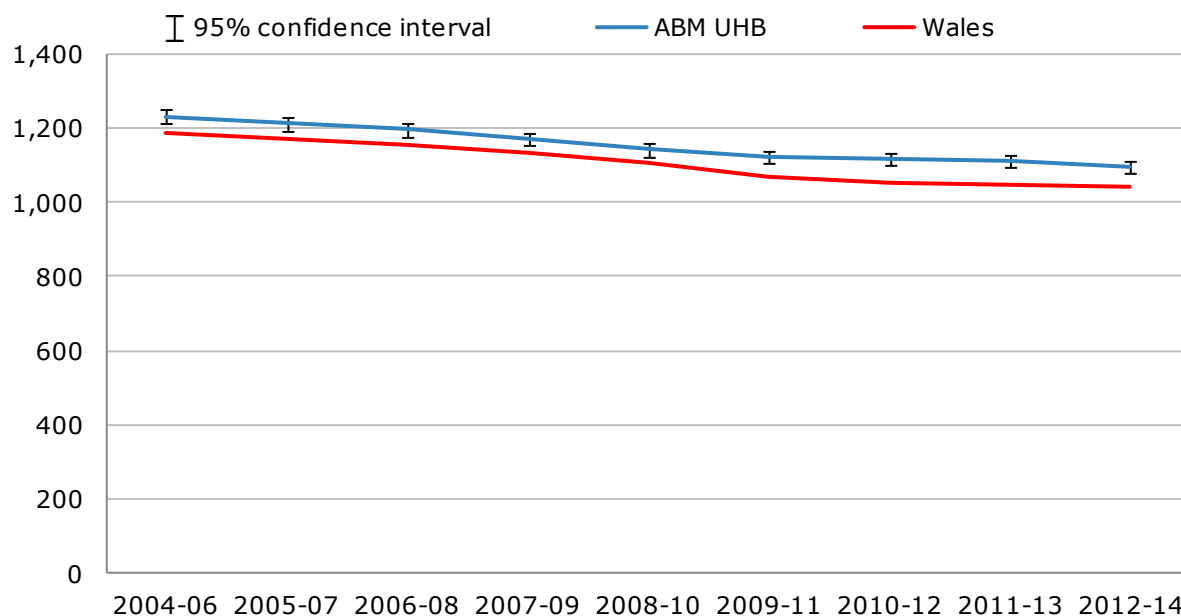
Produced by Public Health Wales Observatory, using PHM & MYE (ONS)



All ages

All-cause mortality, European age-standardised rate per 100,000, persons, all ages, ABM UHB and Wales, 2004-06 to 2012-14

Produced by Public Health Wales Observatory, using PHM & MYE (ONS)

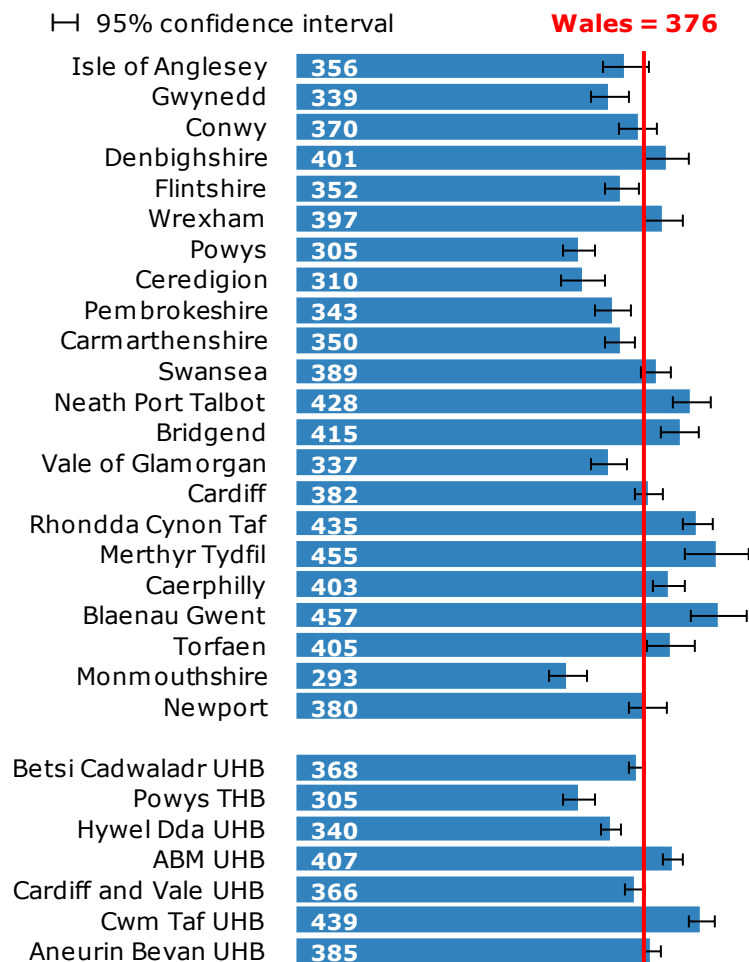


4.2 All-cause mortality 2012-14

Under 75

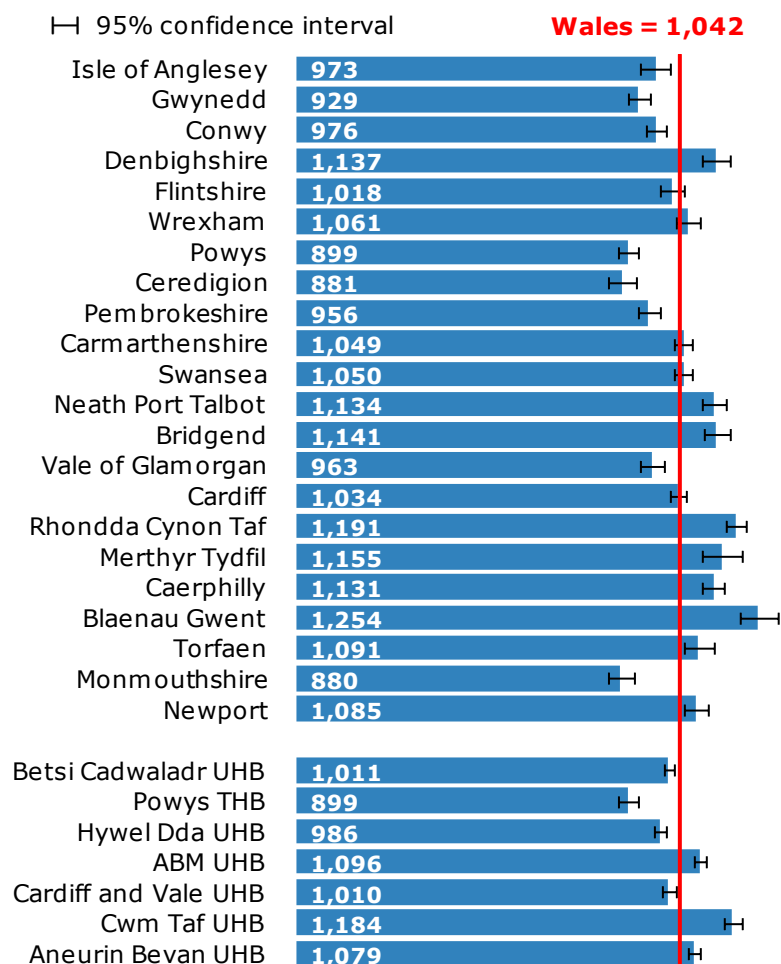
All-cause mortality, European age-standardised rate per 100,000, persons, under 75, Wales local authorities and health boards, 2012-14

Produced by Public Health Wales Observatory, using PHM & MYE (ONS)



All ages**All-cause mortality, European age-standardised rate per 100,000, persons, all ages, Wales local authorities and health boards, 2012-14**

Produced by Public Health Wales Observatory, using PHM & MYE (ONS)

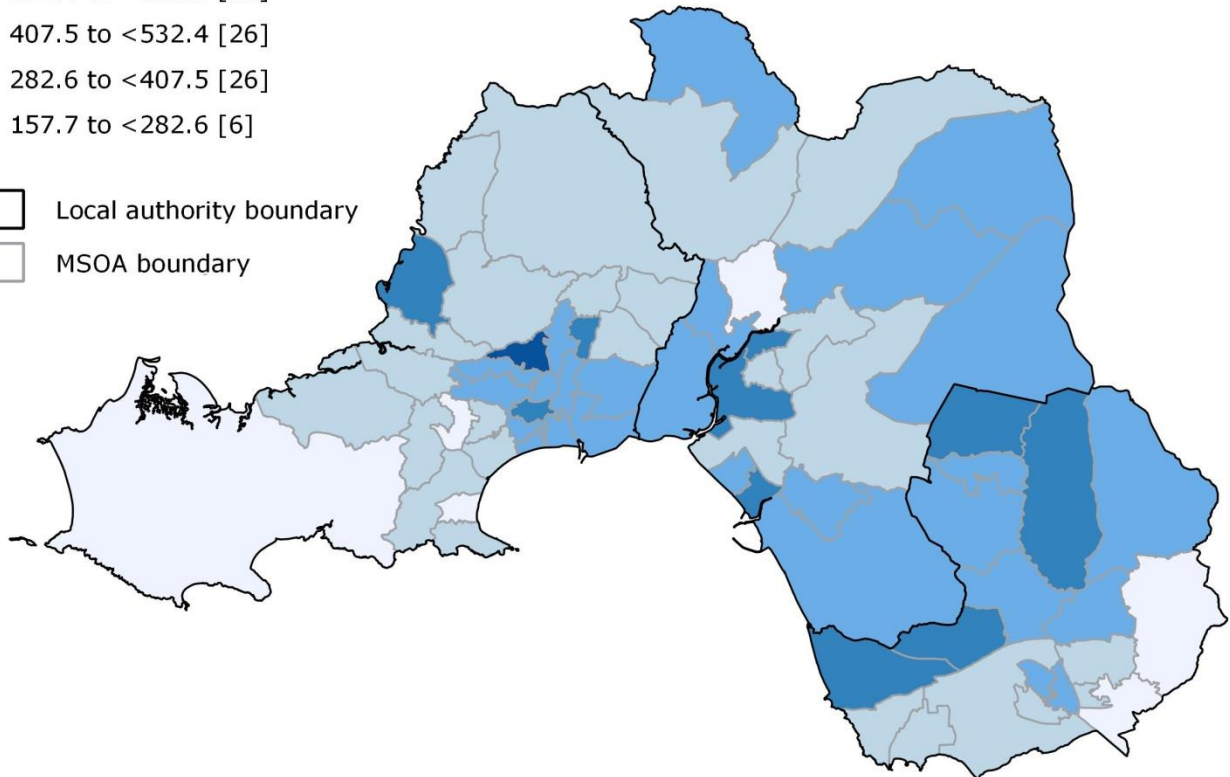
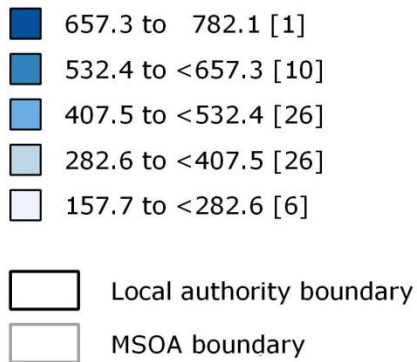


4.3 All-cause mortality by Middle Super Output Area

Under 75

All-cause mortality, persons, under 75, ABM UHB, 2012-2014

MSOA, European age-standardised rate per 100,000



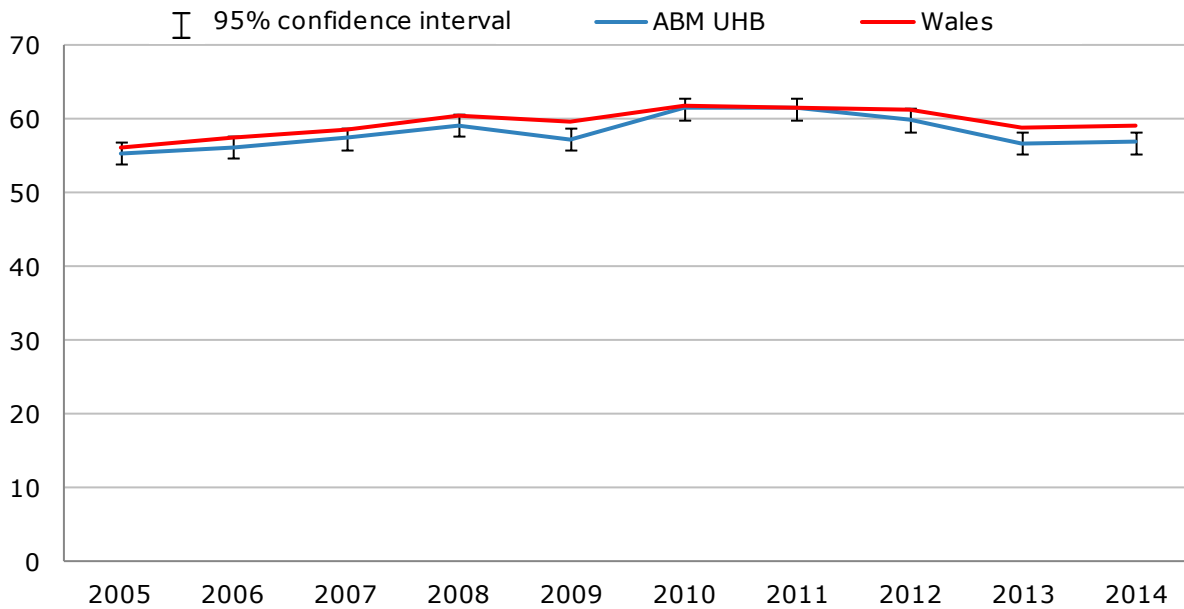
Produced by Public Health Wales Observatory, using PHM & MYE (ONS)
 © Crown Copyright and database right 2016, Ordnance Survey 100044810

5 General fertility rate

5.1 General fertility rate trends

General fertility rate (GFR)*, ABM UHB and Wales, 2005-2014

Produced by Public Health Wales Observatory, using PHB & MYE (ONS)

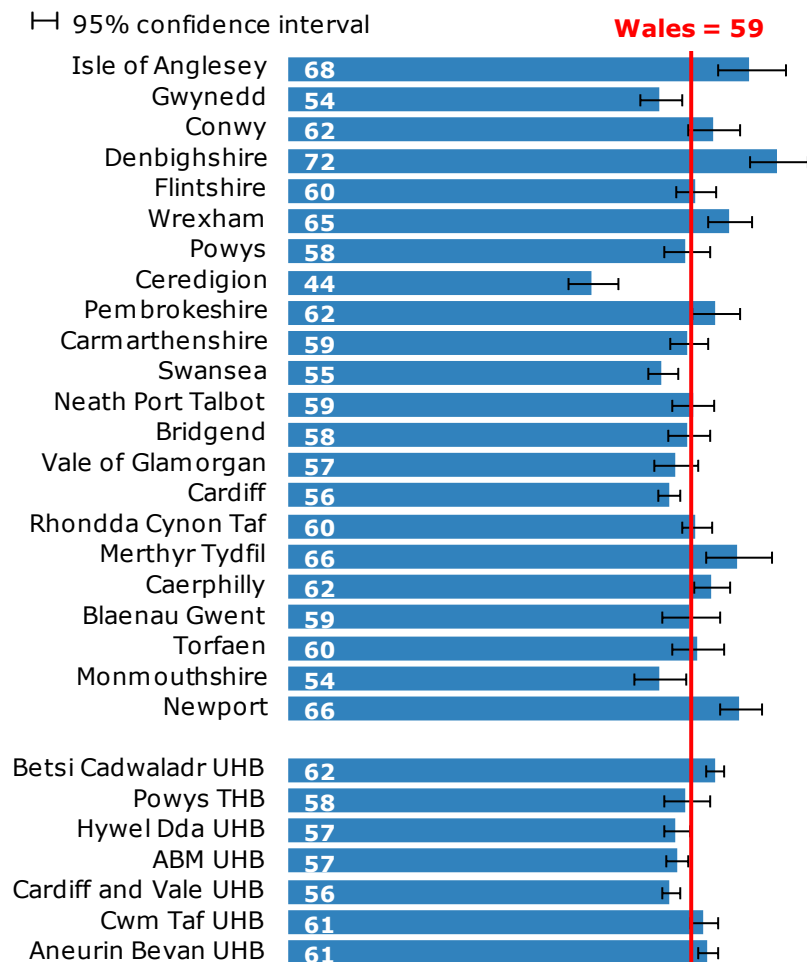


*GFR is the number of live births per 1,000 females aged 15-44

5.2 General fertility rate 2014

General fertility rate (GFR)*, Wales, health boards and local authorities, 2014

Produced by Public Health Wales Observatory, using PHB & MYE (ONS)

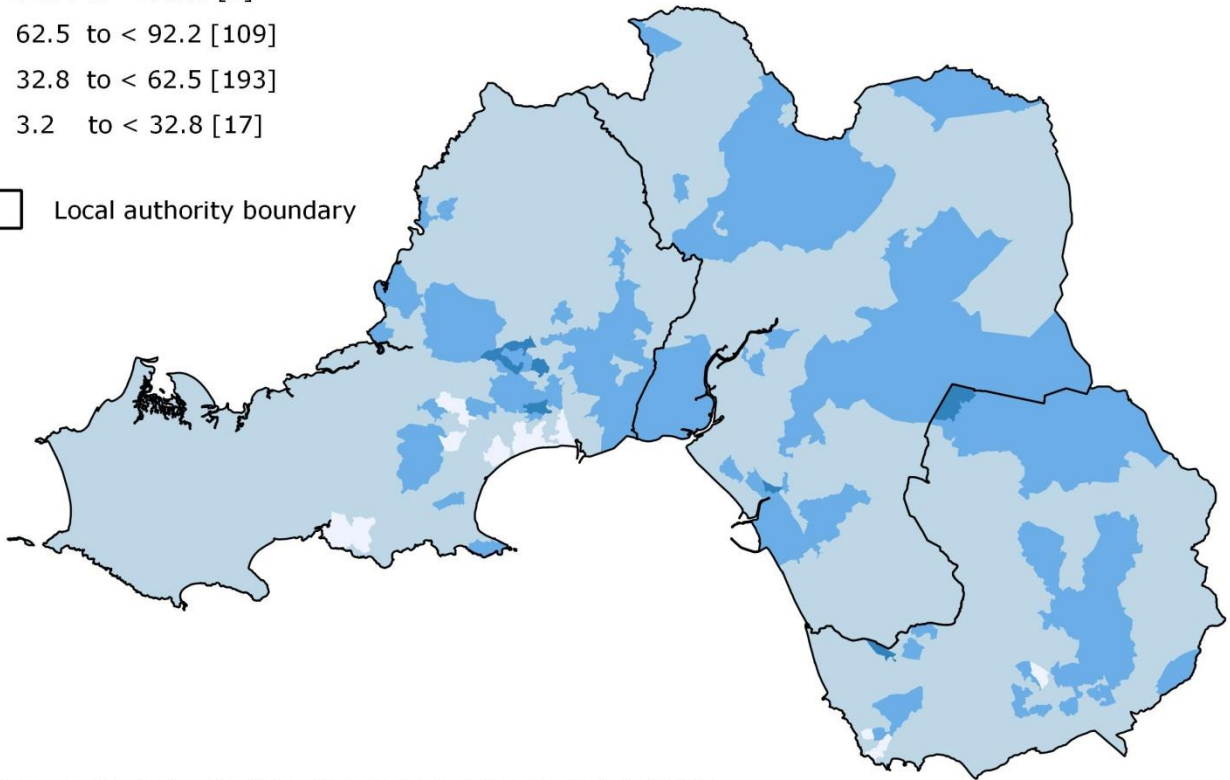
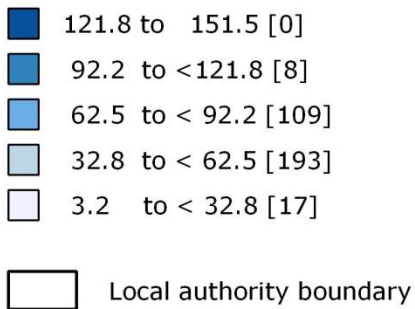


*GFR is the number of live births per 1,000 females aged 15-44

5.3 General fertility rate by Lower Super Output Area

General fertility rate, ABM UHB, 2014

LSOA, live births per 1,000 females aged 15-44



Produced by Public Health Wales Observatory, using PHB & MYE (ONS)
 © Crown Copyright and database right 2016, Ordnance Survey 100044810