

Deep Dive: Primary Care Division

Knowledge, Research and Information Committee

Sarah MacAulay-Nolan and Rachel Andrew

23/09/2025

Purpose

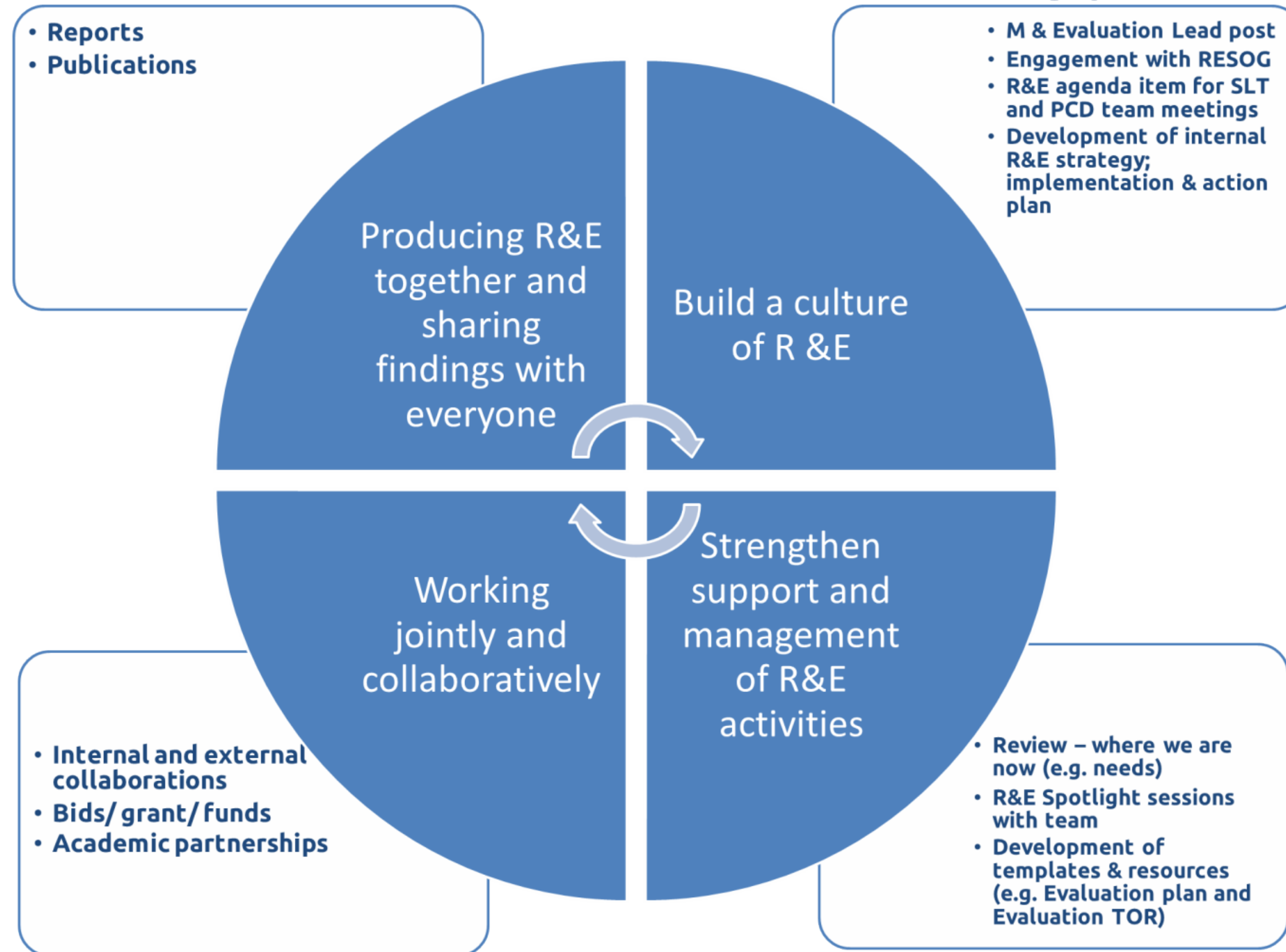
- Provide **assurance** to the Committee on the progress of the Primary Care Division's research and evaluation activity
- Provide examples of how research and evaluation are embedded in our programmes and projects
- Consider our Research and Evaluation (R&E) data and digital requirements

Alignment with PHW long-term strategy

PHW Long Term Strategy – Strategic Priority 4: Supporting the development of a sustainable health and care system focused on prevention and early intervention

- Prevention and early intervention
 - Evaluated impact of our approach to Prevention Based Health and Care
- Secondary care prevention and health interactions
 - Evaluated the Directed Supplementary Service for Complex Multimorbidity and Frailty
- Moving care closer to home
 - Evaluated the Primary Care Model for Wales
- Improve health and well-being and tackle health inequalities
 - Evaluated the impact of our approach to reducing inequalities through primary care settings
 - Provided strategic leadership, advice and support across primary and community care, to strengthen monitoring and evaluation activities
- NHS to positively influence the health and well-being of communities
 - Evaluation of Continuity of Care QI work

Alignment with PHW R&E Strategy



PCD Research and Evaluation Overview

Internal activity 2025-2026 examples

Key:

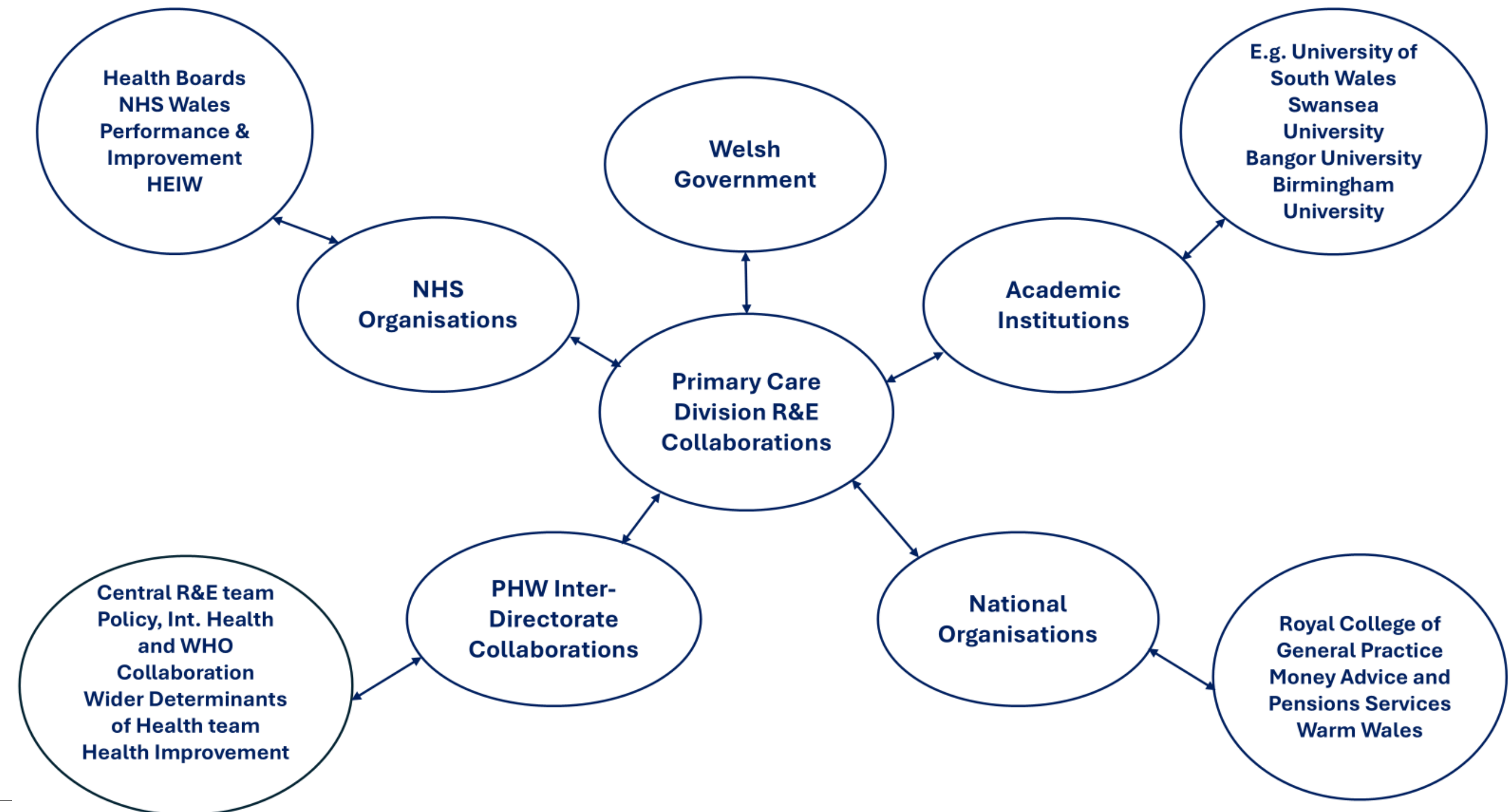
- Evaluation activity
- Research activity

Interventions/ Programmes	Education	Frameworks and guidance	Scoping & evidence reviews
<ul style="list-style-type: none"> • All-Wales Diabetes Prevention Programme • Warm Wales initiative • Primary Care Model for Wales • GMS QI Projects 24/25 • ABCD Plus CVD Prevention GMS QI project 25/26 • Designed to Smile 	<ul style="list-style-type: none"> • E-learning on contraception after pregnancy • Teg I Bawb/ Fair for all training • Primary Care One ME resources 	<ul style="list-style-type: none"> • Health Inequalities Action Plan • Health Inclusion Blueprint 	<ul style="list-style-type: none"> • Social prescribing approaches for young people with mental health and wellbeing support needs • Social prescribing outcomes

PCD Research and Evaluation Overview

External activity and collaborations 2025-2026 examples

- **Advocate** – Actively champion the importance of R&E with our partners
- **Inform** – Synthesise and disseminate findings from R&E to inform policy, strategy, and clinical practice
- **Mobilise** – Coordinate and secure the necessary resources (e.g. funding, staff, and partnerships)
- **Deliver** – Lead and support R&E activities



Our impact



Evaluations delivered

- All-Wales Diabetes Prevention Programme Evaluation
- DSS Evaluation
- Designed to Smile Evaluation
- Components of PCMW evaluation (Self-reflection and Peer review)



Publications and knowledge generation

- Designed to Smile (Wales & Sri Lanka comparison)
- Oral health in care homes (feasibility RCT, qualitative studies, scoping reviews)
- Nutrition and oral health (care home studies, stakeholder perspectives)
- Pharmacy/public health (inhaler disposal behaviours)



Research funding (awarded and in progress)

- £3.1M NIHR HALT-colitis (awarded)
- £2M Faecal transplant study (final stage)
- £2.1M TOPIC care homes (submitted)
- £1.8M TOPIC-2 RCT in care homes (outline)
- £750K NIHR HS&DR (outline)
- £2.5M Modelling study (pipeline)
- £100K Women's Health E-learning (awarded)



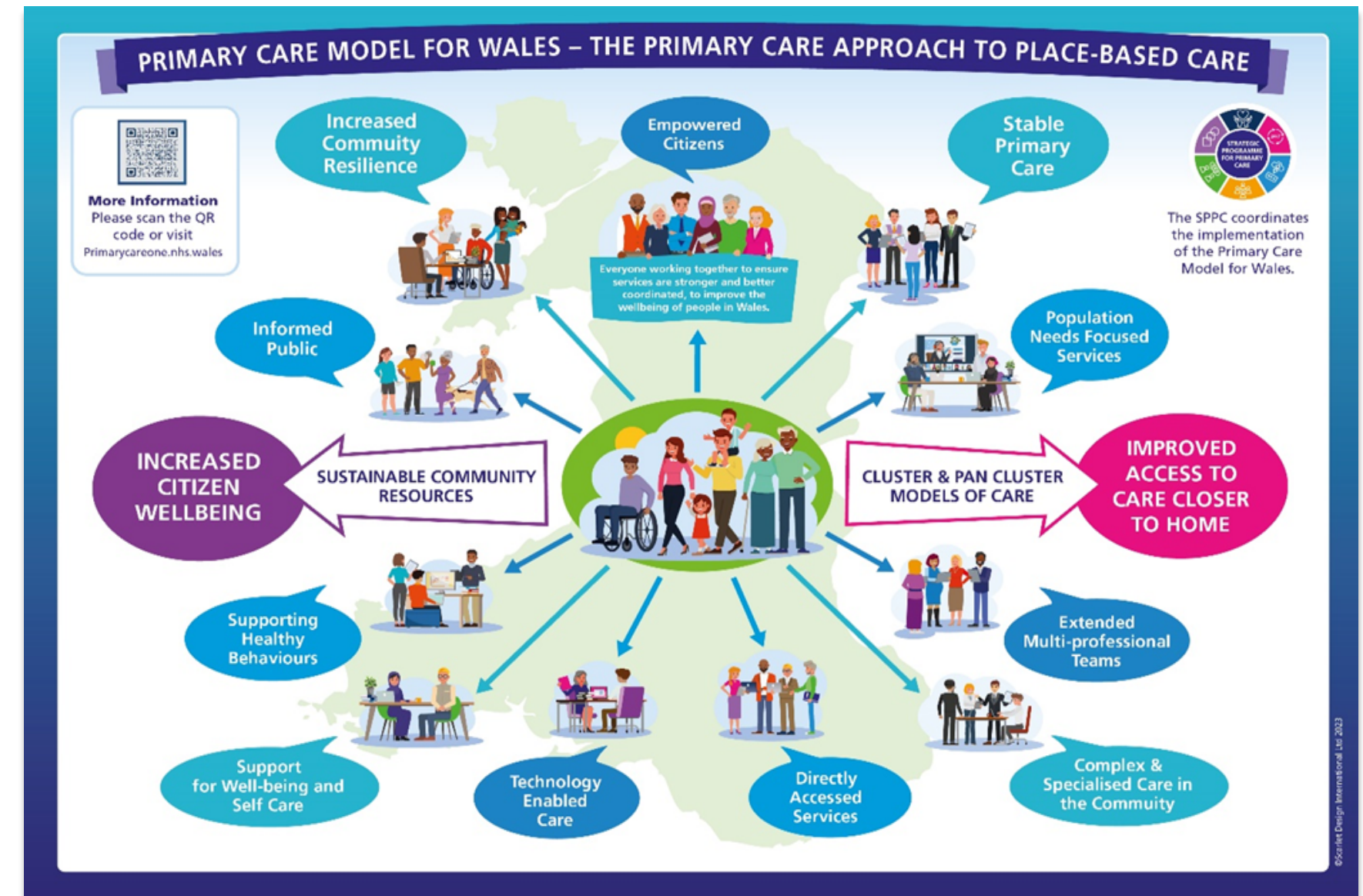
Academic partnerships

- PhD student – GP oral cancer referral data
- Research fellow – AWDPP
- Pre-doctoral Fellow University of Bristol placement
Prevention in Health and Care team

Primary Care Model for Wales

Deep Dive

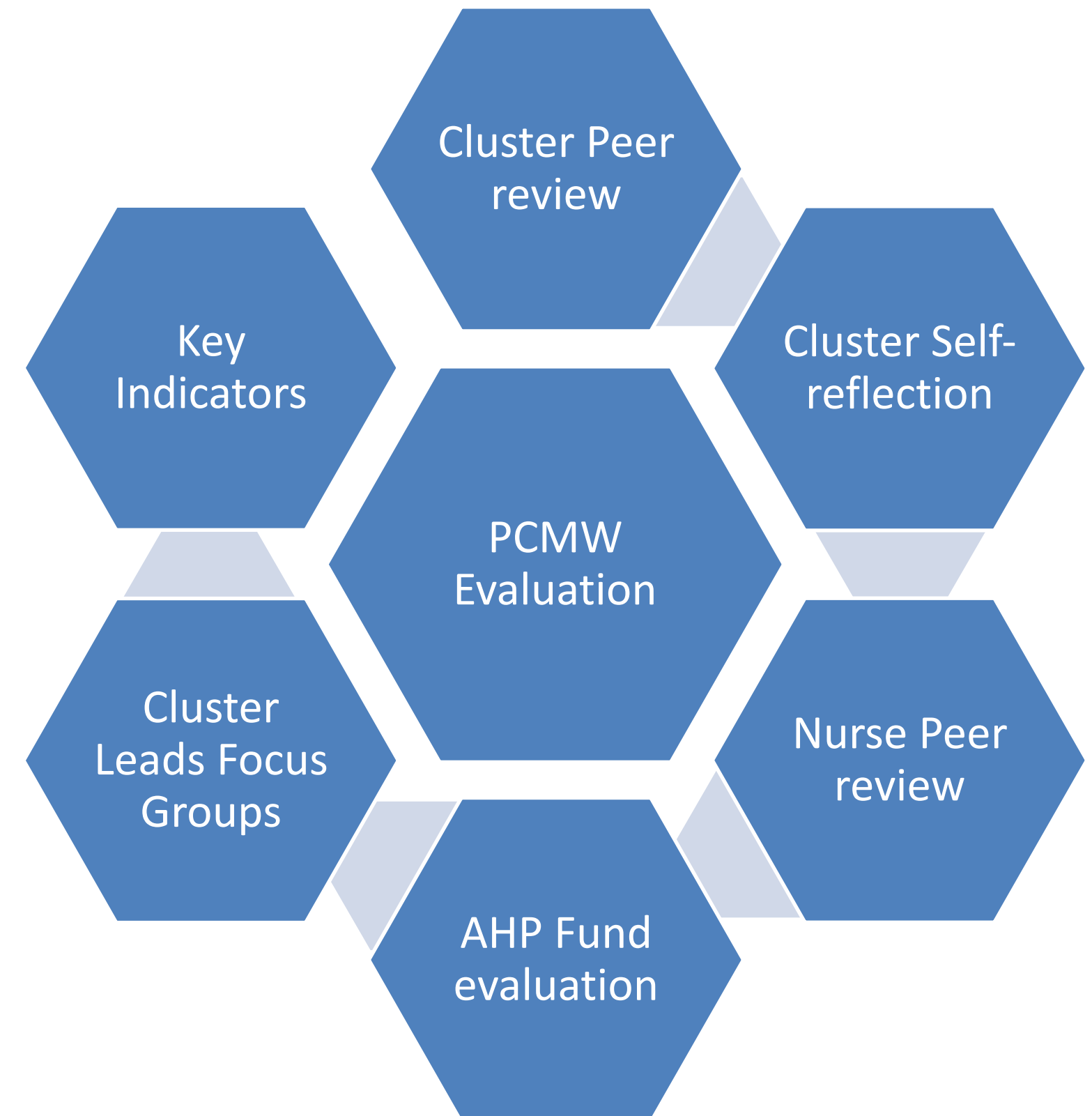
- The [Primary Care Model for Wales](#) (PCMW) is a whole system approach to sustainable and accessible local health and wellbeing care.
- Focusing on place-based care, care closer to home and multi-professional working.
- [Clusters](#) are the central to the PCMW and bring together all local services involved in health and care across a geographical area
- The Primary Care Division (PCD) leads the monitoring and evaluation of the PCMW



Primary Care Model for Wales

Evaluation components

- [Cluster peer review](#) - third cycle in Sep/ October
- [Cluster self-reflection](#) – two cycles completed
- Cluster Leads Focus Groups – deep dive into issues raised through self-reflection
- Strategic Partners reflection on cluster working – Health Board Executive and RPB Leads
- PCMW Key Indicators – six domains agreed
- AHP Fund – supporting the economic evaluation (2026/27)
- Triangulation of all elements into a PCMW Evaluation report (Quarter 4 2025/26)



Primary Care Model for Wales

Impact

- Provide evidence of the progress of cluster working towards implementation of the PCMW and A Healthier Wales
- Inform Welsh Government, NHS Performance and Improvement, Health Boards and Regional Partnership Boards where progress has been made and where additional focus is required
- Strengthen accountability processes

Next steps

- Review to consider if additional evaluation components are required e.g. economic evaluation, broadening peer review and self-reflection to system partners

Directed Supplementary Service Complex Multi-Morbidity and Frailty (DSS)

Deep dive

- Welsh Government issued a DSS to GP practices in Wales to provide proactive care to those with the highest needs
- DSS aim to reduce deterioration of people's health and reduce unscheduled care
- DSS ran December to March 2024/25
- PCD requested to support the evaluation of the DSS
- Process evaluation undertaken with GMS practices who participated in DSS
- Participant survey using a mixed method approach (April 2025)



Directed Supplementary Service Complex Multi-Morbidity and Frailty (DSS)

Impact

- Evaluation shared with Welsh Government and Health Boards
- Evaluation findings incorporated into the Cabinet Secretaries review of the Winter plans for 2024/25
- Participant insight used to improve the DSS specification for 2025/26
- Evaluation report recommended an outcome evaluation for DSS run in 2025/26

Next Steps

- Ongoing engagement with Welsh Government on the monitoring and evaluation of DSS for winter 2025/26

Forward look

What's next?

- Build on insight from the R&E Spotlight session to create an action plan aligned with team priorities
- Develop and agree of an R&E action and monitoring plan
- Establish 2-3 priority areas to build academic partnerships, supported by R&D team, and embedded in the 2026/27 workplan
- Review and respond to the needs of system partners (e.g. Clusters and Health Board Public Health teams)
- Maintain strength in evaluation activity, while improving our research capacity and impact
- Continue to deliver specific pieces of work for partners:
 - Continuity of Care Evaluation
 - AHP Fund Evaluation
 - DSS 2025/26 Evaluation

R&E, data and digital challenges and needs

- PCD resources to deliver the increasing requests for R&E support from system partners
- Access to primary and community care data for R&E purposes
- Academic partnerships for R&E within primary and community care



GIG
CYMRU
NHS
WALES

Iechyd Cyhoeddus
Cymru
Public Health
Wales

Gweithio gyda'n gilydd
i greu Cymru iachach

Working together
for a healthier Wales