

# Drug Use and gambling

---

Presented by: Helen Erswell and Rick Lines

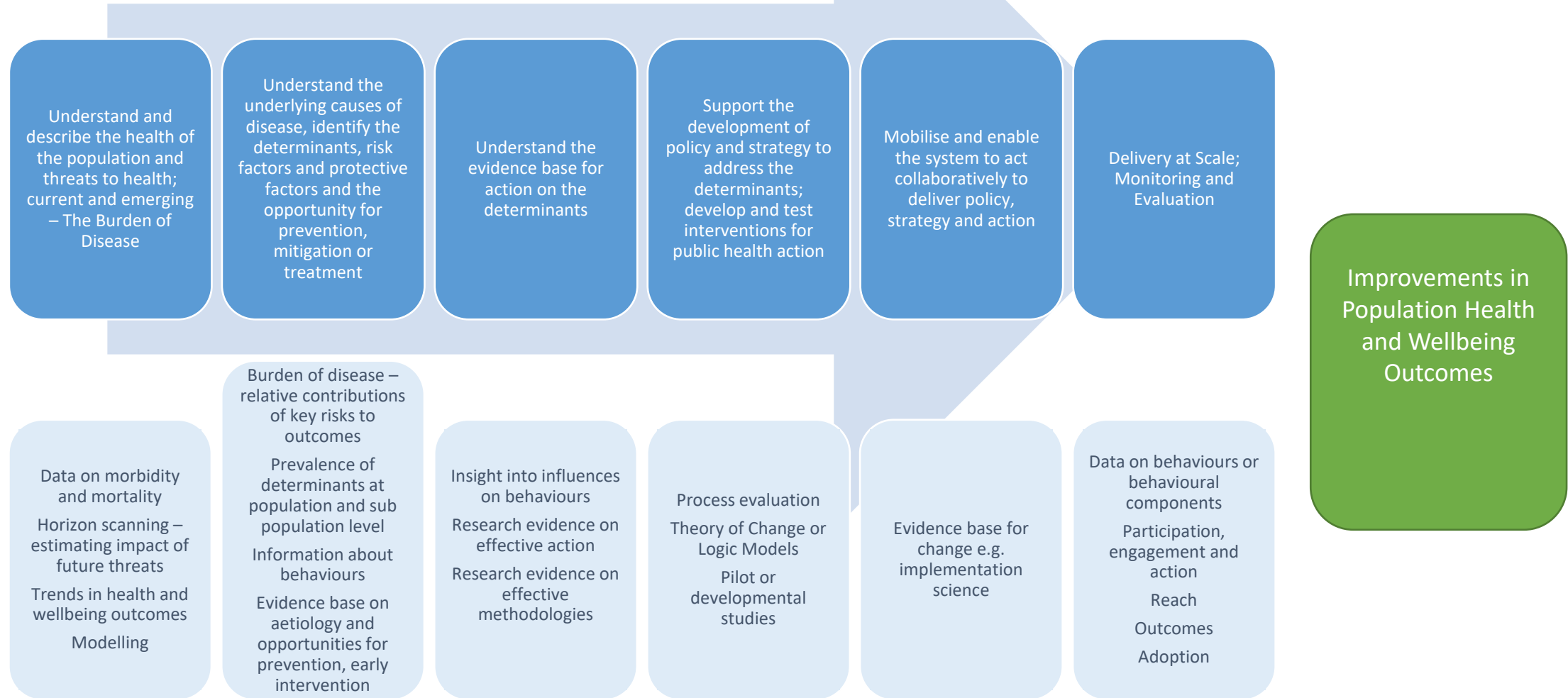
Date: 5 December 2023



GIG  
CYMRU  
NHS  
WALES

Iechyd Cyhoeddus  
Cymru  
Public Health  
Wales

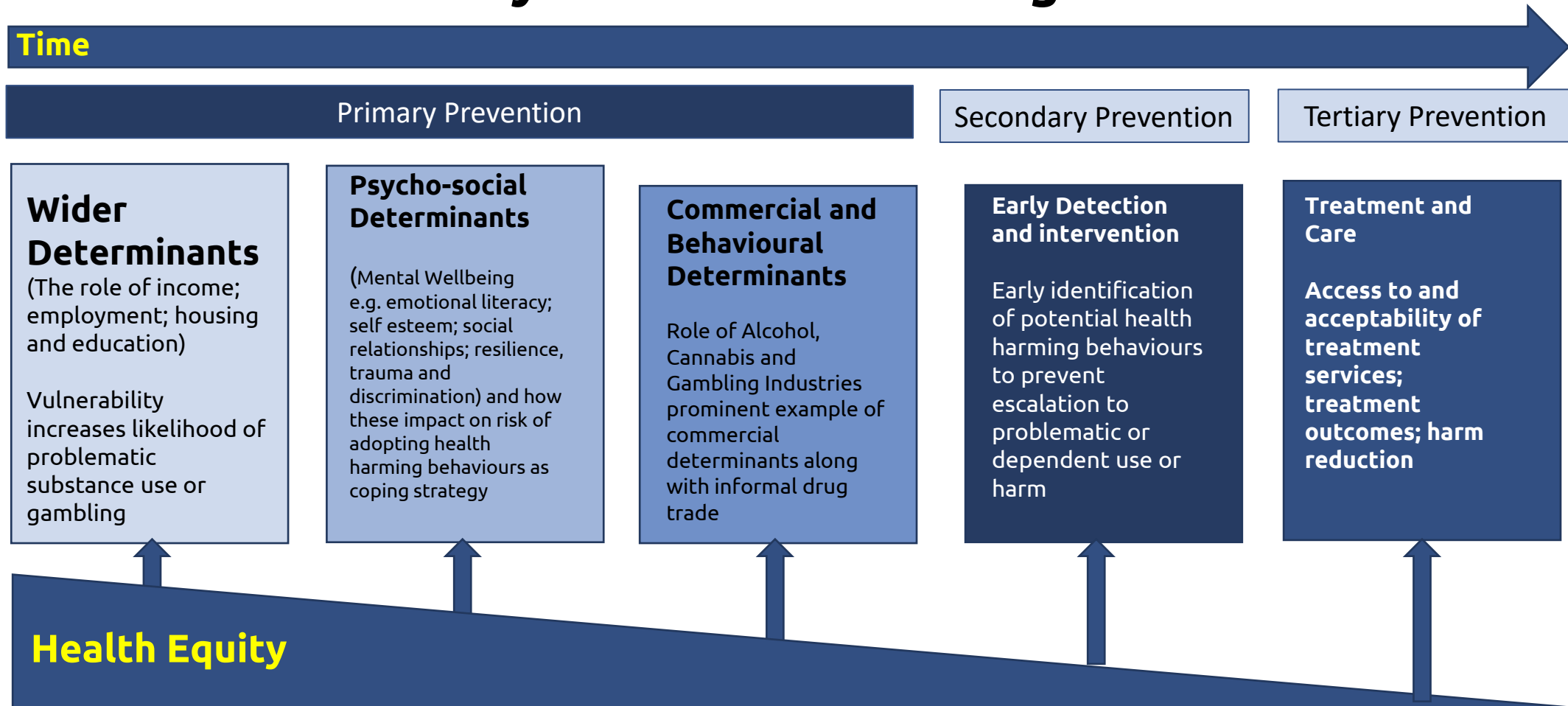
# A Public Health Approach



# Key Requirements

- Time – generally annual data is sufficiently frequent (except for direct service delivery)
- Periodically, need granular data to understand population need and variation
- Prevalence, needs validated, reproducible measures
- Broader range of data sources can inform direction of travel e.g. sales data; qualitative data; social listening and identify new trends e.g. drug seizures; police arrest data; hospital admissions
- Evaluation – proportionate to the evidence base

# Prevention Pathway for Health Harming Behaviours



# Public Health Wales Work

## Cross Organisational Activity

---

- Population Approaches to Prevention
  - Health Improvement Division
  - Policy and International Health
- Targeted Harm Reduction
  - Health Protection e.g. WEDINOS, Blood Borne Virus, IPED, Bacterial Infections

# Understand and describe the issue – prevalence and size of the problem

## What do we have in place

- Gambling Needs Assessment 2022
- Gambling survey data – last done in 2018.
- SHRN data for children aged 11 – 16
- ONS incidence data from crime survey
- Routine mortality data
- Treatment data (drugs)
- Harm Reduction Database
- Qualitative data
- WEDINOS
- BBV data
- Police data

## What are we developing

- Gambling data profile tool in partnership with Swansea University
- Partnership work with the LPHT network to think about indicators we need on a profile
- IPED use – March
- Regional population at health board level
- Estimates of population level drug use
- Study on drug use in prisons in Wales (pending funding)

## What do we need to develop

- Routine data on gambling and drug use rates and impact in population surveys
- Data that is Wales specific
- Data that is accessible
- Improved prevalence data for drug use from routine surveys
- Data for non-opiates
- Granular data on demographics
- Substance use profiles
- A set of standards for what effective drug and gambling systems look like.

# Understand the underlying causes of drug use and gambling

## What do we have in place

- Burden of disease study – relative contributions of different risk and protective factors (Substances)
- Wellbeing of Wales – limited indicators
- Evidence synthesis – who is at risk

## What are we developing

- Gambling levy-funded frameworks for research, prevention and treatment
- Understanding of risk behaviour by young people
- Qualitative research on cannabis and tobacco co-use

## What do we need to develop

- Data profiles of cross cutting risks for substance use, alcohol and gambling

# Understand the evidence base for action on the determinants

## What do we have in place

- Published systematic reviews
- Evidence review on risk and protective factors in YP
- Academic relationships with research groups
- ACES research

## What are we developing

- Substance Misuse part of new Communicable Disease Inclusion Health Programme (CDIHP) to address overlapping determinants of vulnerable and stigmatised populations

## What do we need to develop

- Cross cutting risks
- Understand how to increase protective factors at a population level
- Data which helps ensure the most at-risk population are targeted

# Support the development of policy and strategy to address the determinants

## What do we have in place

- Development of evidence reviews
- Bespoke research commissioned
- CDIHP
- New Children and Young People SMTF (forthcoming)

## What are we developing

## What do we need to develop

Cross organisational public health approaches

# Mobilise and enable the system to act collaboratively

## What do we have in place

- Treatment data
- Treatment outcome data
- Harm Reduction Database
- WEDINOS
- CDIHP
- Drug Related Deaths in Wales (annual)
- Data Mining Report (annua)

## What are we developing

## What do we need to develop

- Data needs to underpin strategy – indicators on a broad range of data points to see if the things we are doing are having an impact
- A set of standards for what effective drug and gambling response systems look like, so we can understand gaps and assess state of play

# Delivery at Scale; Monitoring and Evaluation

## What do we have in place

- Treatment data
- Treatment outcome data
- Harm Reduction Database
- WEDINOS
- Peer-based Naloxone Evaluation
- Evaluation of ACT bacterial infection pack
- Review of pharmacy NSP
- Coordinate regular meetings HB harm reduction and IPED leads

**KRIC – Drugs and Gambling**

## What are we developing

- Evaluation framework for gambling prevention and treatment
- Safer Inhalation Pilot (partnership with SWP, HBs)
- Working group on BZD harm reduction
- Work on IPED harm reduction in prisons

## What do we need to develop

- Without population prevalence data we cannot monitor progress against prevention or treatment outcomes

# Case study of evidence into action

## Cannabis and Tobacco Co-use

---

- Stop smoking team identify cannabis co-use as an issue using service data
- Epidemiological report demonstrates the size of the issue
- Commission a qualitative report which reports that people who smoke cannabis are concerned about their tobacco co-use
- Working group established with University of Bath to look at how to develop response
- Added to the IMTP milestones for 204/25

# Case study of evidence into action

## Safer Inhalation Device Pilot Programme

- Increased crack use and related harms identified as a concern by drug services across Wales
- January 2023: PHW investigation into a cluster of GAS infections among service users in Wrexham demonstrated link with communal smoking practices/pipe sharing
- March: National consultation of service users recommended provision of safer smoking devices
- May: HP SMT approved CDIHP proposal to approach to South Wales Police to agree an MoU to allow distribution of Safer Inhalation Devices
- September: MoU text agreed off by SMT and SWP legal team
- November: MoU sent to PHW CEO and SWP CC for sign off. Focus groups held with service users to identify best SID kit
- December: MoUs to be signed off between PHW and participating drug services
- January 2024: Multi-site pilot to begin (including Cardiff, Newport, Barry, Merthyr Tydfil, Swansea, Neath/Port Talbot)